

**SHOVEL CREEK FIRE**  
**AK-FAS-911319**  
**Plans MAP Map**

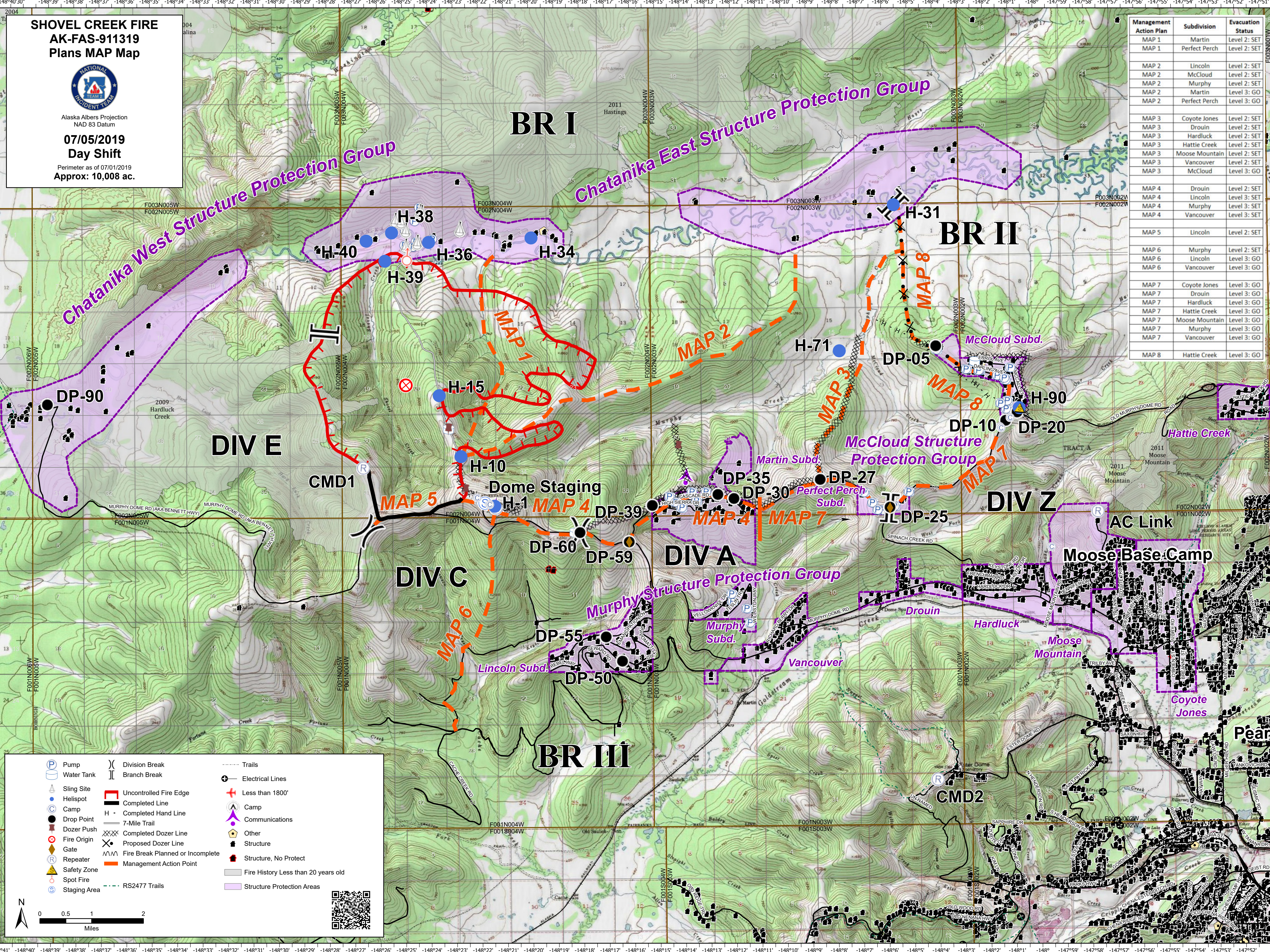


Alaska Albers Projection  
 NAD 83 Datum

**07/05/2019**  
**Day Shift**

Perimeter as of 07/01/2019  
 Approx: 10,008 ac.

Management Action Plan	Subdivision	Evacuation Status
MAP 1	Martin	Level 2: SET
MAP 1	Perfect Perch	Level 2: SET
MAP 2	Lincoln	Level 2: SET
MAP 2	McCloud	Level 2: SET
MAP 2	Murphy	Level 2: SET
MAP 2	Martin	Level 3: GO
MAP 2	Perfect Perch	Level 3: GO
MAP 3	Coyote Jones	Level 2: SET
MAP 3	Drouin	Level 2: SET
MAP 3	Hardluck	Level 2: SET
MAP 3	Hattie Creek	Level 2: SET
MAP 3	Moose Mountain	Level 2: SET
MAP 3	Vancouver	Level 2: SET
MAP 3	McCloud	Level 3: GO
MAP 4	Drouin	Level 2: SET
MAP 4	Lincoln	Level 3: SET
MAP 4	Murphy	Level 3: SET
MAP 4	Vancouver	Level 3: SET
MAP 5	Lincoln	Level 2: SET
MAP 6	Murphy	Level 2: SET
MAP 6	Lincoln	Level 3: GO
MAP 6	Vancouver	Level 3: GO
MAP 7	Coyote Jones	Level 3: GO
MAP 7	Drouin	Level 3: GO
MAP 7	Hardluck	Level 3: GO
MAP 7	Hattie Creek	Level 3: GO
MAP 7	Moose Mountain	Level 3: GO
MAP 7	Murphy	Level 3: GO
MAP 7	Vancouver	Level 3: GO
MAP 8	Hattie Creek	Level 3: GO



Pump	Division Break	Trails
Water Tank	Branch Break	Electrical Lines
Sling Site	Uncontrolled Fire Edge	Less than 1800'
Helispot	Completed Line	Camp
Camp	Completed Hand Line	Communications
Drop Point	7-Mile Trail	Other
Dozer Push	Completed Dozer Line	Structure
Fire Origin	Proposed Dozer Line	Structure, No Protect
Gate	Fire Break Planned or Incomplete	Fire History Less than 20 years old
Repeater	Management Action Point	Structure Protection Areas
Safety Zone	RS2477 Trails	
Spot Fire		
Staging Area		

