

Structure Protection Maps



AK-FAS-911319
07/05/2019



**Chatanika
East**

**Chatanika
West**

**McCloud
Subd**

**Perfect
Perch
Subd**

**Martin
Subd**

**Moose
Mountain**

Hattie Creek

**Coyote
Jones**

Lincoln Subd

**Murphy
Subd**

Drouin

Hardluck

Vancouver

Structure Protection Boundary
Roads

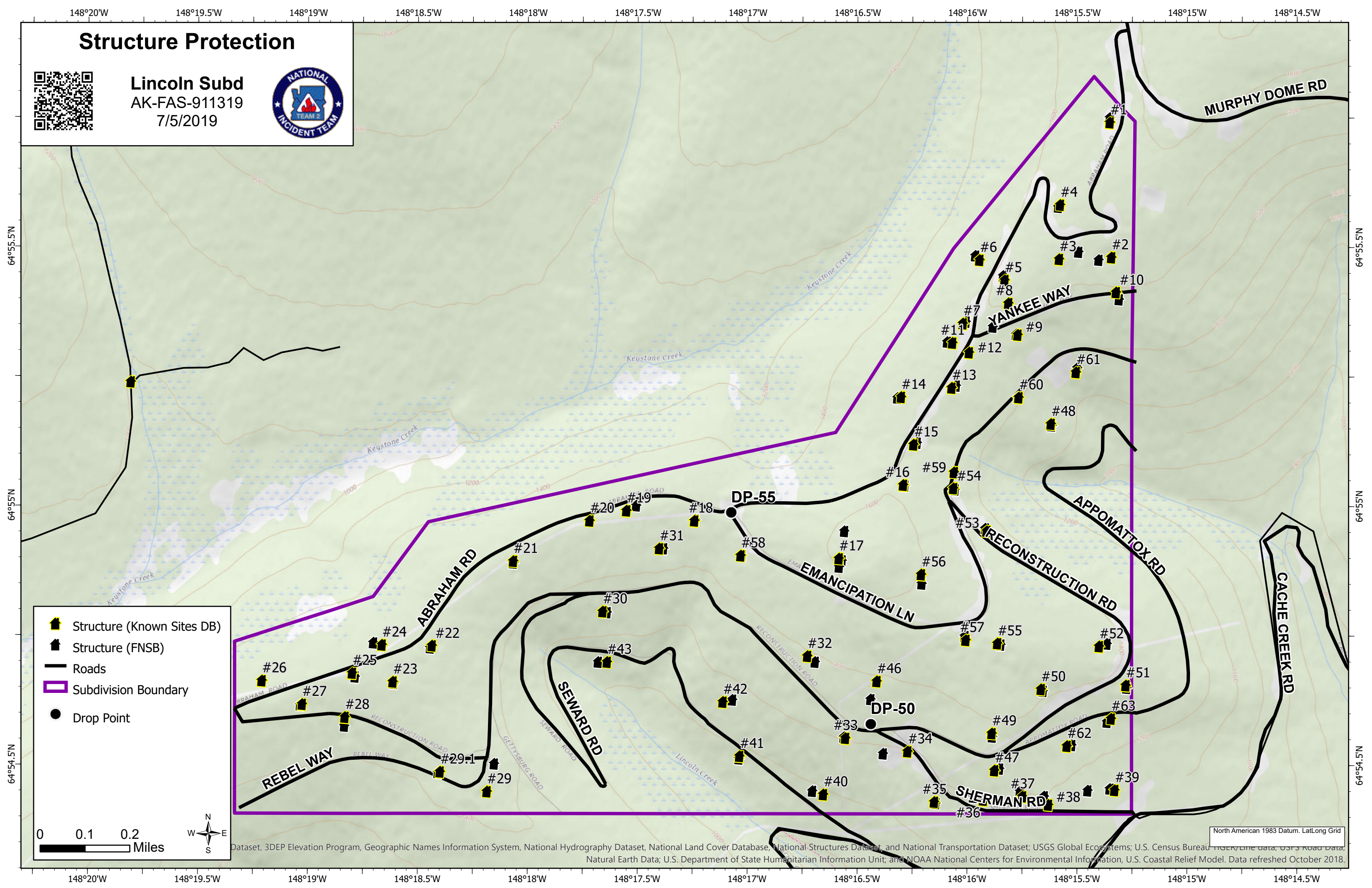
0 0.5 1 1.5 Miles



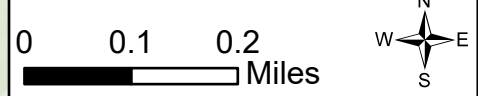
Structure Protection



Lincoln Subd
AK-FAS-911319
7/5/2019



- Structure (Known Sites DB)
- Structure (FNSB)
- Roads
- Subdivision Boundary
- Drop Point

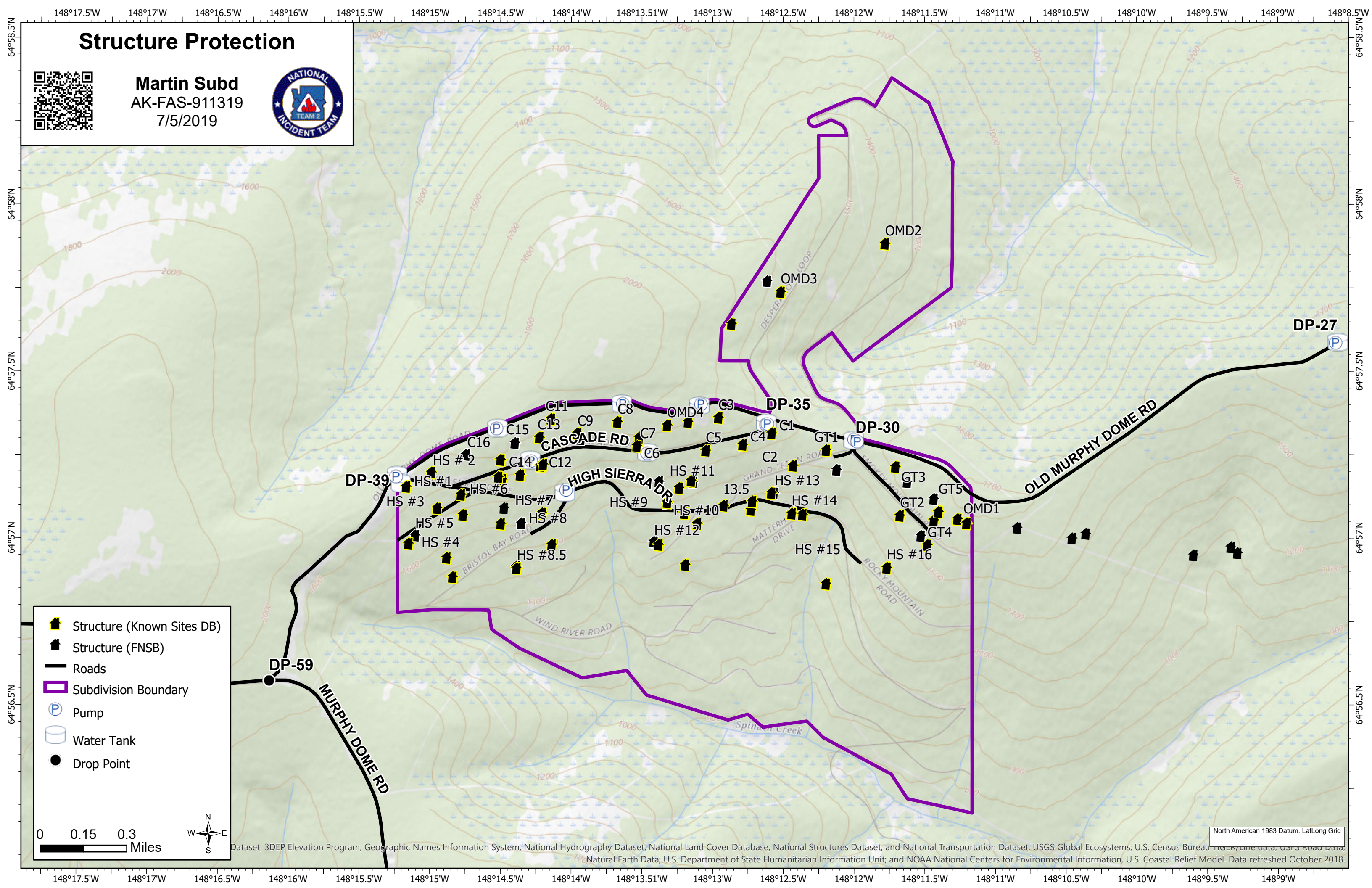


North American 1983 Datum, Lat/Long Grid
Dataset, 3DEP Elevation Program, Geographic Names Information System, National Hydrography Dataset, National Land Cover Database, National Structures Dataset, and National Transportation Dataset; USGS Global Ecosystems; U.S. Census Bureau TIGER/Line data, USFS Road Data, Natural Earth Data; U.S. Department of State Humanitarian Information Unit; and NOAA National Centers for Environmental Information, U.S. Coastal Relief Model. Data refreshed October 2018.

Structure Protection



Martin Subd
AK-FAS-911319
7/5/2019



- Structure (Known Sites DB)
- Structure (FNSB)
- Roads
- Subdivision Boundary
- Pump
- Water Tank
- Drop Point

0 0.15 0.3 Miles



Dataset, 3DEP Elevation Program, Geographic Names Information System, National Hydrography Dataset, National Land Cover Database, National Structures Dataset, and National Transportation Dataset; USGS Global Ecosystems; U.S. Census Bureau TIGER/Line data, USFS Road Data, Natural Earth Data; U.S. Department of State Humanitarian Information Unit; and NOAA National Centers for Environmental Information, U.S. Coastal Relief Model. Data refreshed October 2018.

North American 1983 Datum, Lat/Long Grid

Structure Protection



McCloud Subd
AK-FAS-911319
7/5/2019



DP-05

38

37

35

32

29

36

34

ERROL AVE

31

30

PAUL RD

8

27

17

16

13

12

15

14

11

DARLING AVE

9

6

28

27

25

26

25

6

5

4

3

2

1

2

18

19

20

21

22

23

24

5

6

7

8

9

10

11

12

13

14

15

16

17

18

19

20

21

22

23

24

25

26

27

28

29

30

31

32

33

34

35

36

37

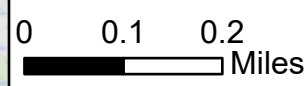
38

DP-20

DP-10

OLD MURPHY DOME RD

- Structure (Known Sites DB)
- Structure (FNSB)
- Roads
- Subdivision Boundary
- Pump
- Water Tank
- Drop Point

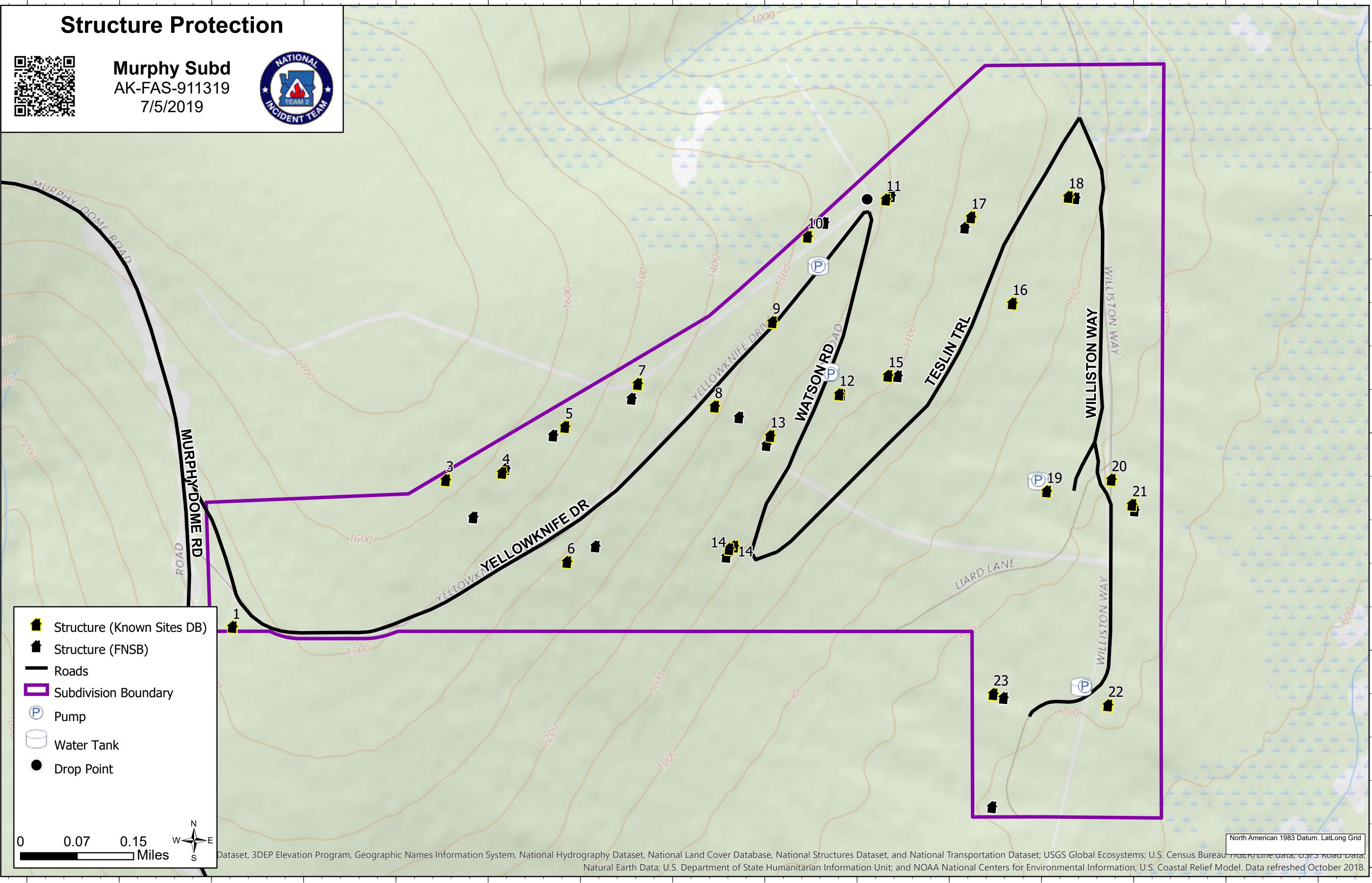


North American 1983 Datum, Lat/Long Grid
Dataset, 3DEP Elevation Program, Geographic Names Information System, National Hydrography Dataset, National Land Cover Database, National Structures Dataset, and National Transportation Dataset; USGS Global Ecosystems; U.S. Census Bureau TIGER/Line data, USFS Road Data, Natural Earth Data; U.S. Department of State Humanitarian Information Unit; and NOAA National Centers for Environmental Information, U.S. Coastal Relief Model. Data refreshed October 2018.

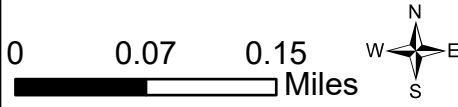
Structure Protection



Murphy Subd
AK-FAS-911319
7/5/2019



- Structure (Known Sites DB)
- Structure (FNSB)
- Roads
- Subdivision Boundary
- Pump
- Water Tank
- Drop Point



North American 1983 Datum, Lat/Long Grid
Dataset, 3DEP Elevation Program, Geographic Names Information System, National Hydrography Dataset, National Land Cover Database, National Structures Dataset, and National Transportation Dataset; USGS Global Ecosystems; U.S. Census Bureau TIGER/Line data, USFS Road Data, Natural Earth Data; U.S. Department of State Humanitarian Information Unit; and NOAA National Centers for Environmental Information, U.S. Coastal Relief Model. Data refreshed October 2018.

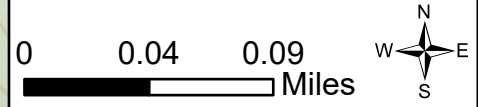
Structure Protection



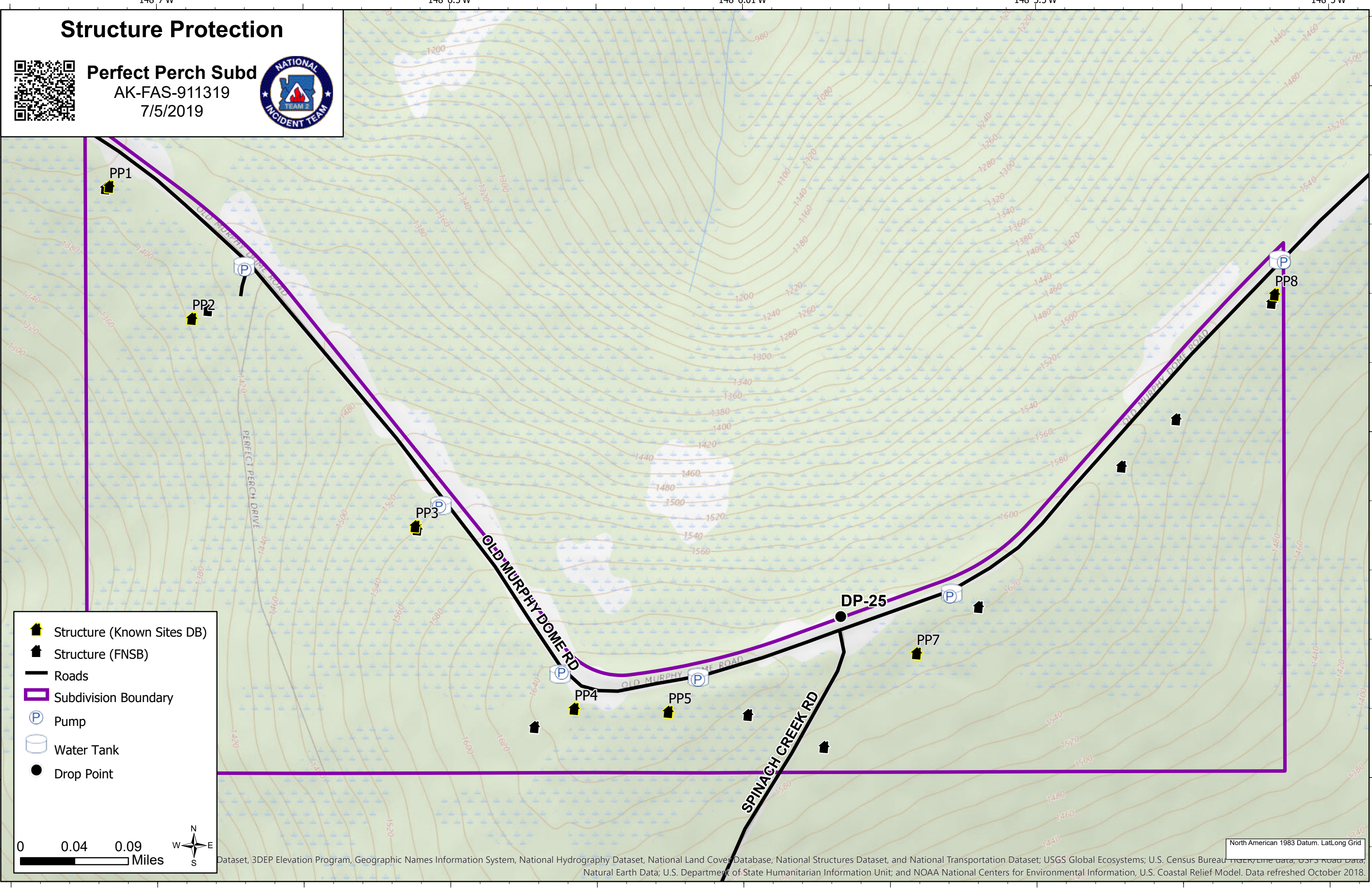
Perfect Perch Subd
AK-FAS-911319
7/5/2019



- Structure (Known Sites DB)
- Structure (FNSB)
- Roads
- Subdivision Boundary
- Pump
- Water Tank
- Drop Point



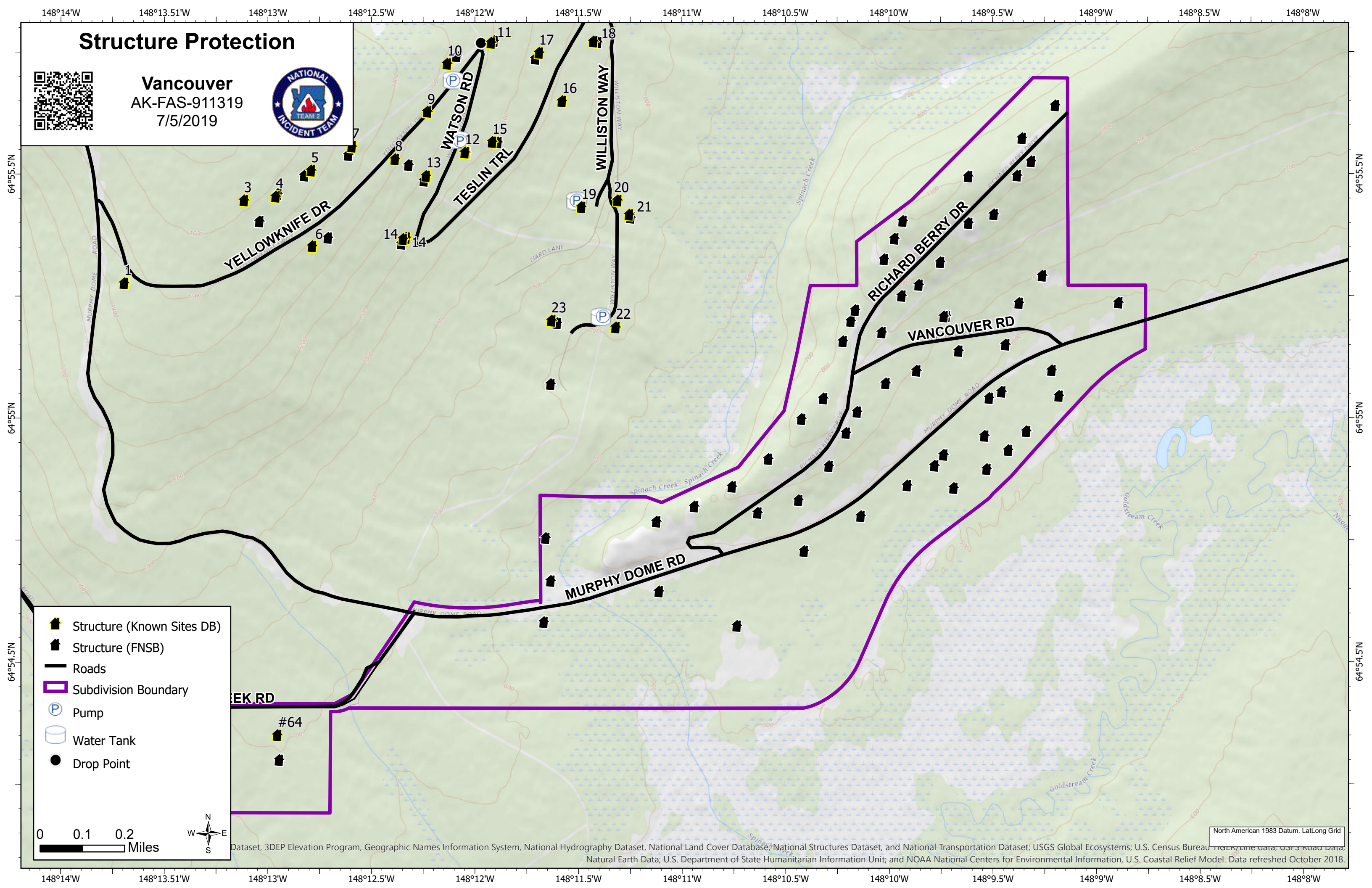
Dataset, 3DEP Elevation Program, Geographic Names Information System, National Hydrography Dataset, National Land Cover Database, National Structures Dataset, and National Transportation Dataset; USGS Global Ecosystems; U.S. Census Bureau TIGER/Line data, USFS Road Data, Natural Earth Data; U.S. Department of State Humanitarian Information Unit; and NOAA National Centers for Environmental Information, U.S. Coastal Relief Model. Data refreshed October 2018.



Structure Protection



Vancouver
AK-FAS-911319
7/5/2019



- Structure (Known Sites DB)
- Structure (FNSB)
- Roads
- Subdivision Boundary
- Pump
- Water Tank
- Drop Point

0 0.1 0.2 Miles



North American 1983 Datum, Lat/Long Grid
Dataset, 3DEP Elevation Program, Geographic Names Information System, National Hydrography Dataset, National Land Cover Database, National Structures Dataset, and National Transportation Dataset; USGS Global Ecosystems; U.S. Census Bureau TIGER/Line data, USFS Road Data, Natural Earth Data; U.S. Department of State Humanitarian Information Unit; and NOAA National Centers for Environmental Information, U.S. Coastal Relief Model. Data refreshed October 2018.