

**SHOVEL CREEK FIRE  
AK-FAS-911319  
Aviation Map**

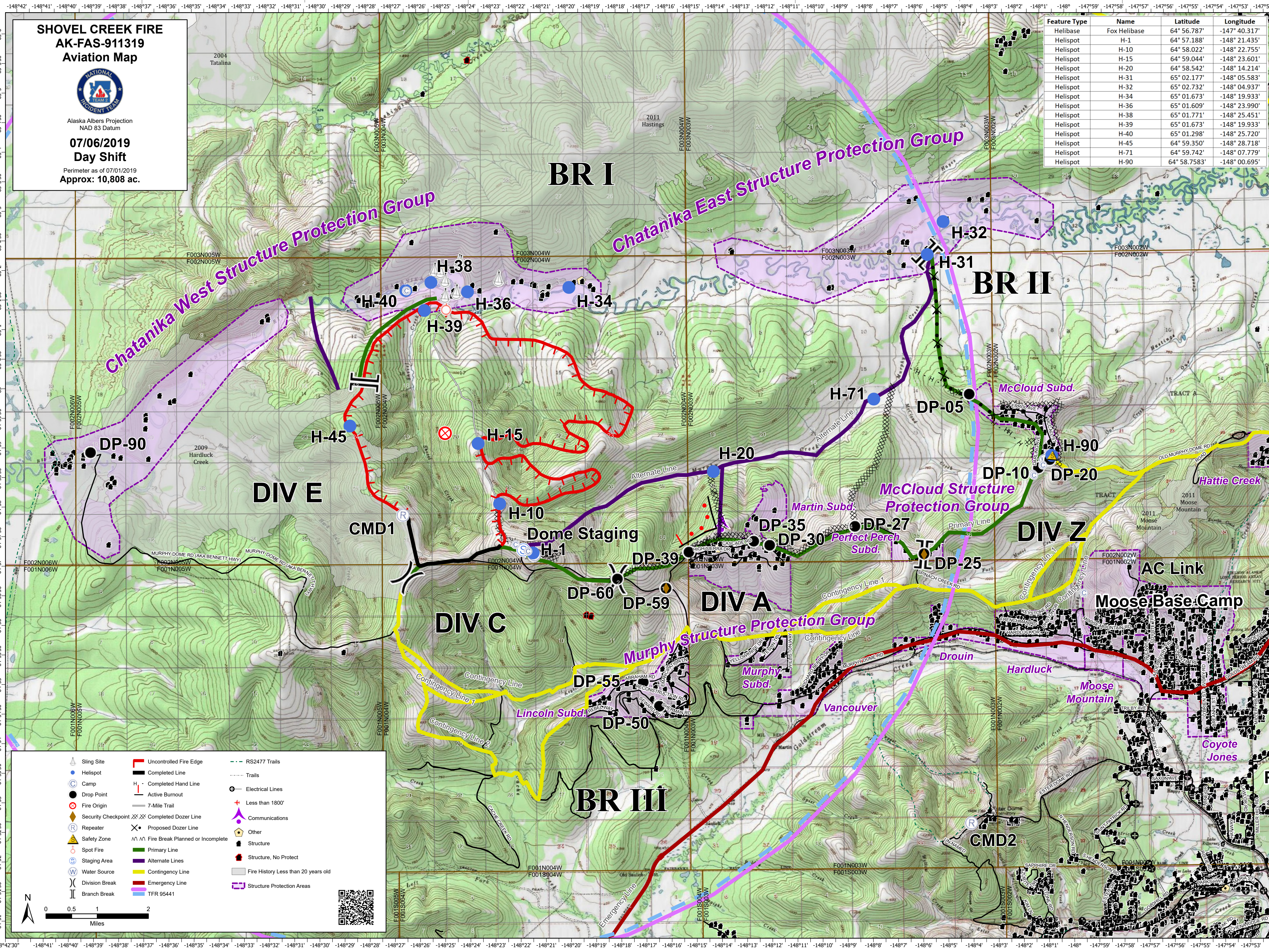


Alaska Albers Projection  
NAD 83 Datum

**07/06/2019  
Day Shift**

Perimeter as of 07/01/2019  
Approx: 10,808 ac.

Feature Type	Name	Latitude	Longitude
Helibase	Fox Helibase	64° 56.787'	-147° 40.317'
Helispot	H-1	64° 57.188'	-148° 21.435'
Helispot	H-10	64° 58.022'	-148° 22.755'
Helispot	H-15	64° 59.044'	-148° 23.601'
Helispot	H-20	64° 58.542'	-148° 14.214'
Helispot	H-31	65° 02.177'	-148° 05.583'
Helispot	H-32	65° 02.732'	-148° 04.937'
Helispot	H-34	65° 01.673'	-148° 19.933'
Helispot	H-36	65° 01.609'	-148° 23.990'
Helispot	H-38	65° 01.771'	-148° 25.451'
Helispot	H-39	65° 01.673'	-148° 19.933'
Helispot	H-40	65° 01.298'	-148° 25.720'
Helispot	H-45	64° 59.350'	-148° 28.718'
Helispot	H-71	64° 59.742'	-148° 07.779'
Helispot	H-90	64° 58.7583'	-148° 00.695'



- Sling Site
- Helispot
- Camp
- Drop Point
- Fire Origin
- Security Checkpoint
- Repeater
- Safety Zone
- Spot Fire
- Staging Area
- Water Source
- Division Break
- Branch Break

- Uncontrolled Fire Edge
- Completed Line
- Completed Hand Line
- Active Burnout
- 7-Mile Trail
- Completed Dozer Line
- Proposed Dozer Line
- Fire Break Planned or Incomplete
- Primary Line
- Alternate Lines
- Contingency Line
- Emergency Line
- TFR 95441

- RS2477 Trails
- Trails
- Electrical Lines
- Less than 1800'
- Communications
- Other
- Structure
- Structure, No Protect
- Fire History Less than 20 years old
- Structure Protection Areas

0 0.5 1 2 Miles