

**SHOVEL CREEK FIRE
AK-FAS-911319
OPS Map**

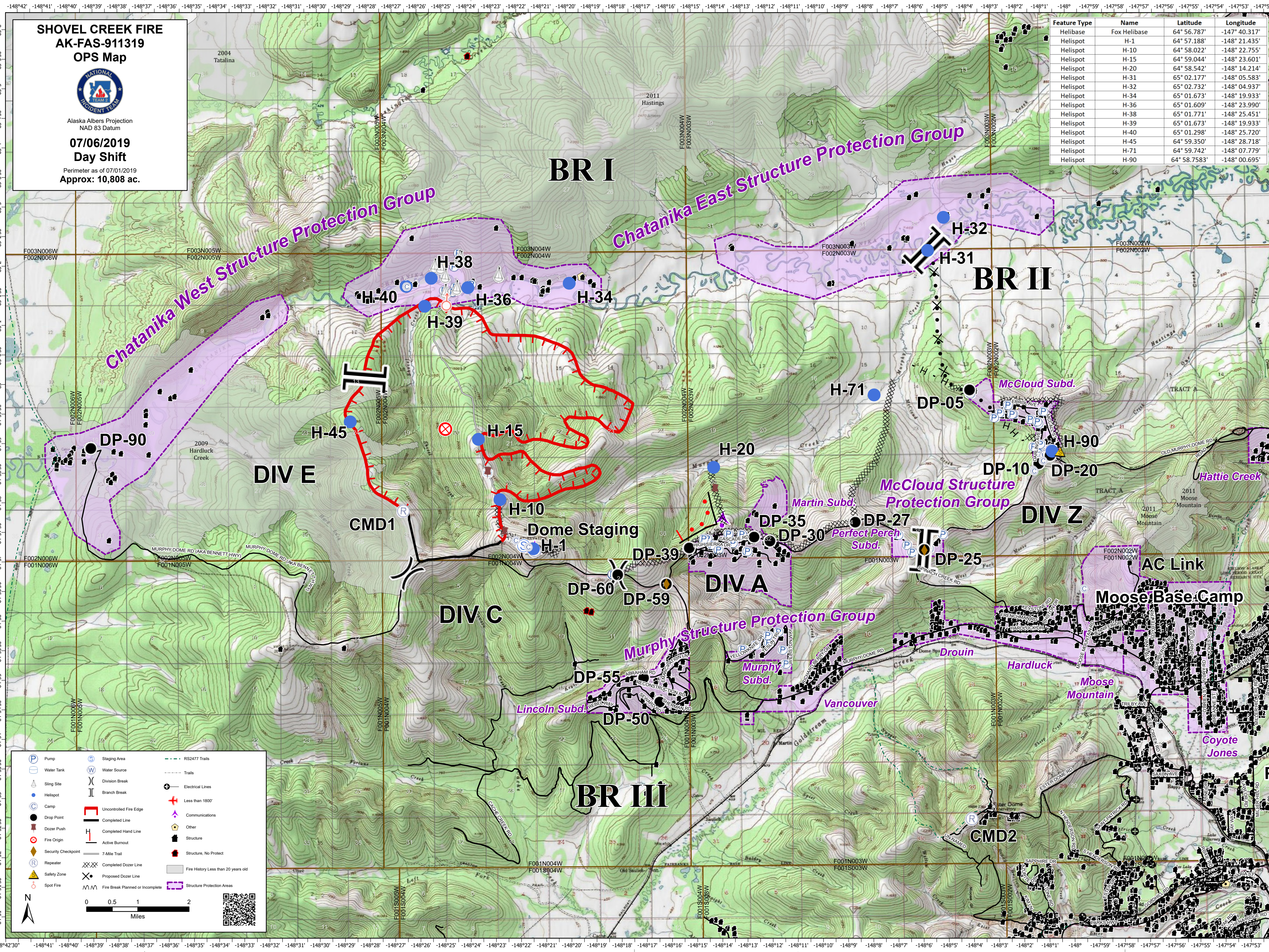


Alaska Albers Projection
NAD 83 Datum

**07/06/2019
Day Shift**

Perimeter as of 07/01/2019
Approx: 10,808 ac.

Feature Type	Name	Latitude	Longitude
Helibase	Fox Helibase	64° 56.787'	-147° 40.317'
Helispot	H-1	64° 57.188'	-148° 21.435'
Helispot	H-10	64° 58.022'	-148° 22.755'
Helispot	H-15	64° 59.044'	-148° 23.601'
Helispot	H-20	64° 58.542'	-148° 14.214'
Helispot	H-31	65° 02.177'	-148° 05.583'
Helispot	H-32	65° 02.732'	-148° 04.937'
Helispot	H-34	65° 01.673'	-148° 19.933'
Helispot	H-36	65° 01.609'	-148° 23.990'
Helispot	H-38	65° 01.771'	-148° 25.451'
Helispot	H-39	65° 01.673'	-148° 19.933'
Helispot	H-40	65° 01.298'	-148° 25.720'
Helispot	H-45	64° 59.350'	-148° 28.718'
Helispot	H-71	64° 59.742'	-148° 07.779'
Helispot	H-90	64° 58.7583'	-148° 00.695'



	Pump		Staging Area		RS2477 Trails
	Water Tank		Water Source		Trails
	Sling Site		Division Break		Electrical Lines
	Helispot		Branch Break		Less than 1800'
	Camp		Uncontrolled Fire Edge		Communications
	Drop Point		Completed Line		Other
	Dozer Push		Completed Hand Line		Structure
	Fire Origin		Active Burnout		Structure, No Protect
	Security Checkpoint		7-Mile Trail		Fire History Less than 20 years old
	Repeater		Completed Dozer Line		Structure Protection Areas
	Safety Zone		Proposed Dozer Line		
	Spot Fire		Fire Break Planned or Incomplete		

0 0.5 1 2 Miles