

**SHOVEL CREEK FIRE
AK-FAS-911319
Aviation Map**

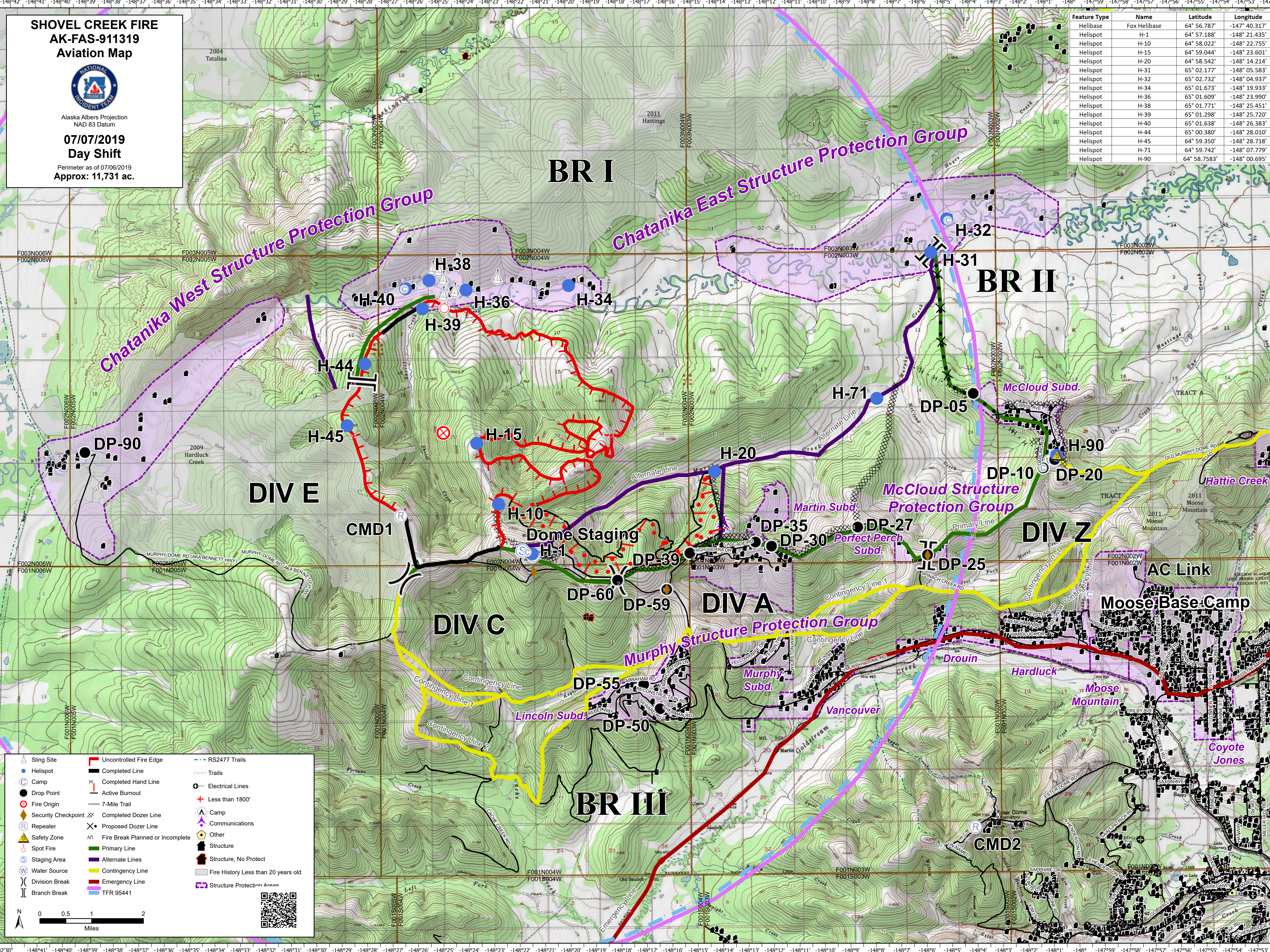


Alaska Albers Projection
NAD 83 Datum

**07/07/2019
Day Shift**

Perimeter as of 07/06/2019
Approx: 11,731 ac.

Feature Type	Name	Latitude	Longitude
Helibase	Fox Helibase	64° 56.787'	-147° 40.317'
Helispot	H-1	64° 57.188'	-148° 21.435'
Helispot	H-10	64° 58.022'	-148° 22.755'
Helispot	H-15	64° 59.044'	-148° 23.601'
Helispot	H-20	64° 58.542'	-148° 14.214'
Helispot	H-31	65° 02.177'	-148° 05.583'
Helispot	H-32	65° 02.732'	-148° 04.937'
Helispot	H-34	65° 01.673'	-148° 19.933'
Helispot	H-36	65° 01.609'	-148° 23.990'
Helispot	H-38	65° 01.771'	-148° 25.451'
Helispot	H-39	65° 01.298'	-148° 25.720'
Helispot	H-40	65° 01.638'	-148° 26.383'
Helispot	H-44	65° 00.380'	-148° 28.010'
Helispot	H-45	64° 59.350'	-148° 28.718'
Helispot	H-71	64° 59.742'	-148° 07.779'
Helispot	H-90	64° 58.7583'	-148° 00.695'



Sling Site	Uncontrolled Fire Edge	RS2477 Trails
Helispot	Completed Line	Trails
Camp	Completed Hand Line	Electrical Lines
Drop Point	Active Burnout	Less than 1800'
Fire Origin	7-Mile Trail	Camp
Security Checkpoint	Completed Dozer Line	Communications
Repeater	Proposed Dozer Line	Other
Safety Zone	Fire Break Planned or Incomplete	Structure
Spot Fire	Primary Line	Structure, No Protect
Staging Area	Alternate Lines	Fire History Less than 20 years old
Water Source	Contingency Line	Structure Protection Areas
Division Break	Emergency Line	
Branch Break	TFR 95441	

0 0.5 1 2 Miles