

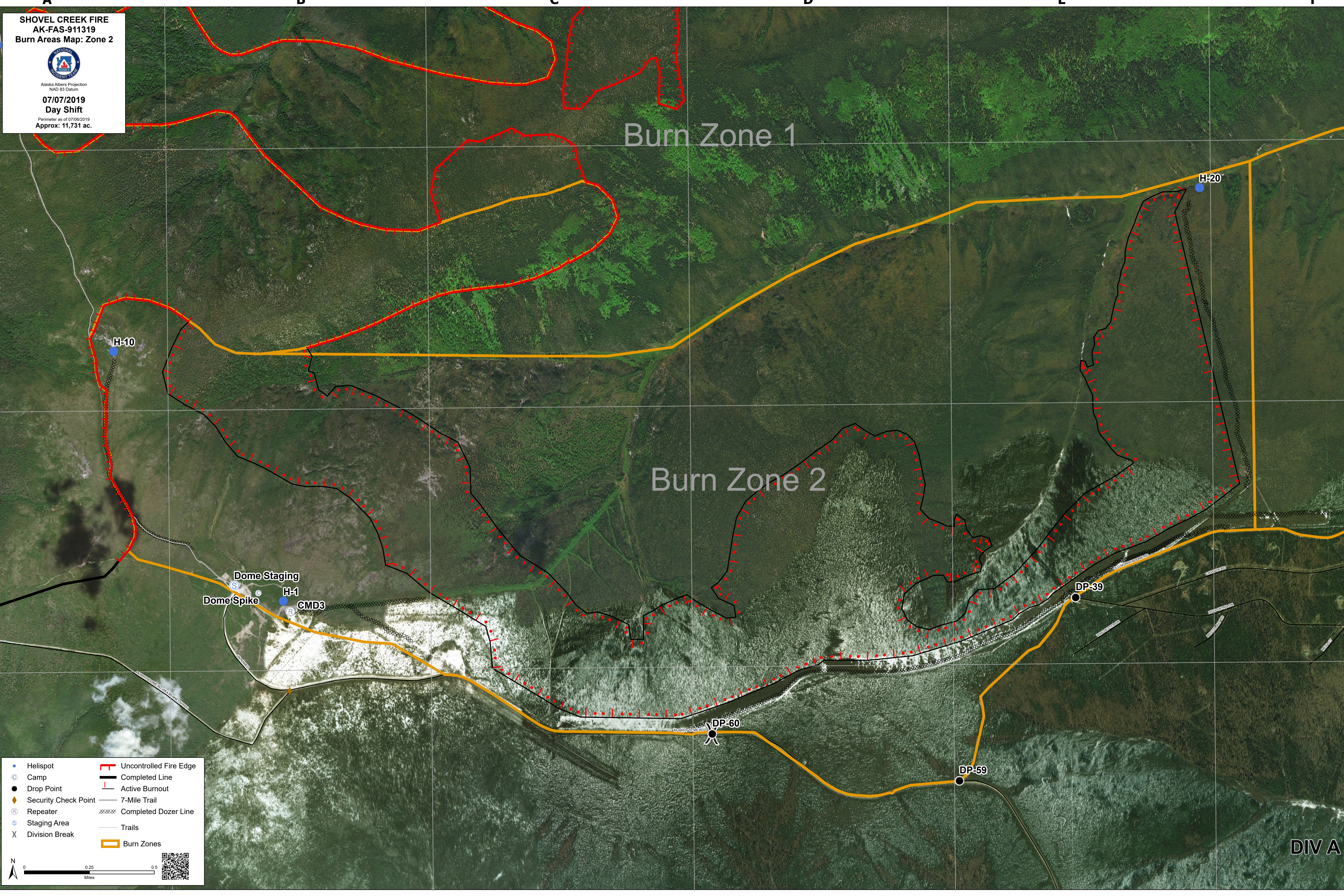
SHOVEL CREEK FIRE
AK-FAS-911319
Burn Areas Map: Zone 2



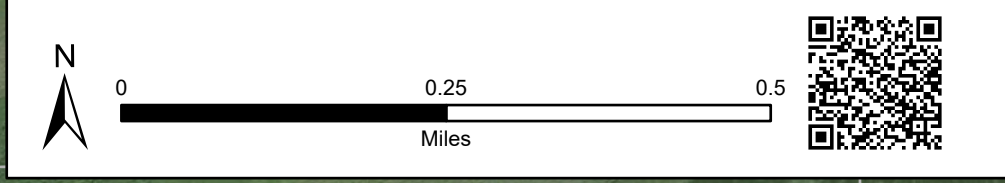
Alaska Albers Projection
NAD 83 Datum
07/07/2019
Day Shift
Perimeter as of 07/06/2019
Approx: 11,731 ac.

Burn Zone 1

Burn Zone 2



- | | |
|------------------------|--------------------------|
| • Helispot | — Uncontrolled Fire Edge |
| ⊙ Camp | — Completed Line |
| ● Drop Point | — Active Burnout |
| ◆ Security Check Point | — 7-Mile Trail |
| Ⓡ Repeater | ⊗ Completed Dozer Line |
| Ⓢ Staging Area | ⋯ Trails |
| ⌋ Division Break | ▭ Burn Zones |



DIV A