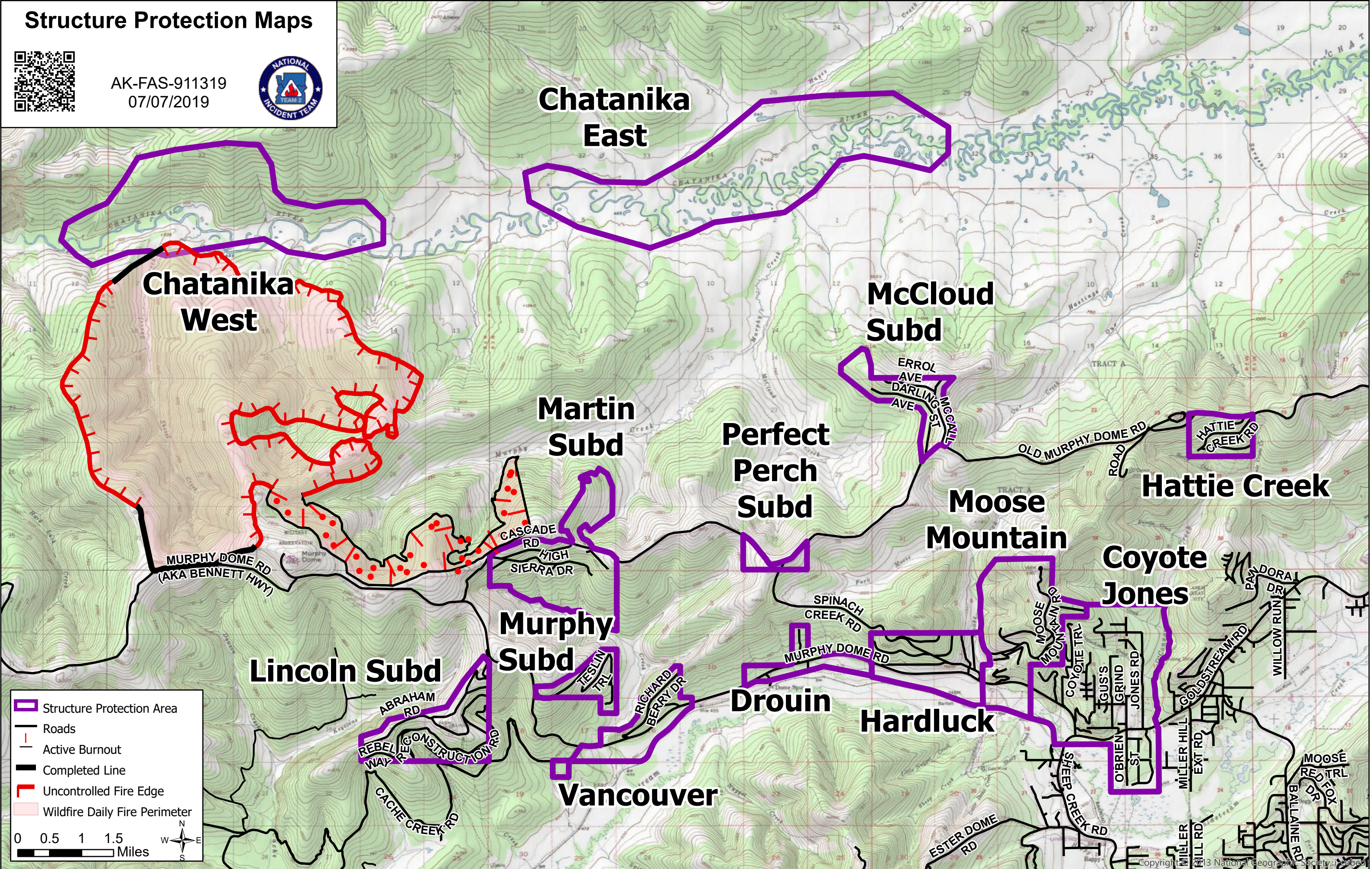


Structure Protection Maps



AK-FAS-911319
07/07/2019



Chatanika West

Chatanika East

McCloud Subd

Martin Subd

Perfect Perch Subd

Moose Mountain

Hattie Creek

Coyote Jones

Murphy Subd

Drouin

Hardluck

Vancouver

Lincoln Subd

Structure Protection Area

Roads

Active Burnout

Completed Line

Uncontrolled Fire Edge

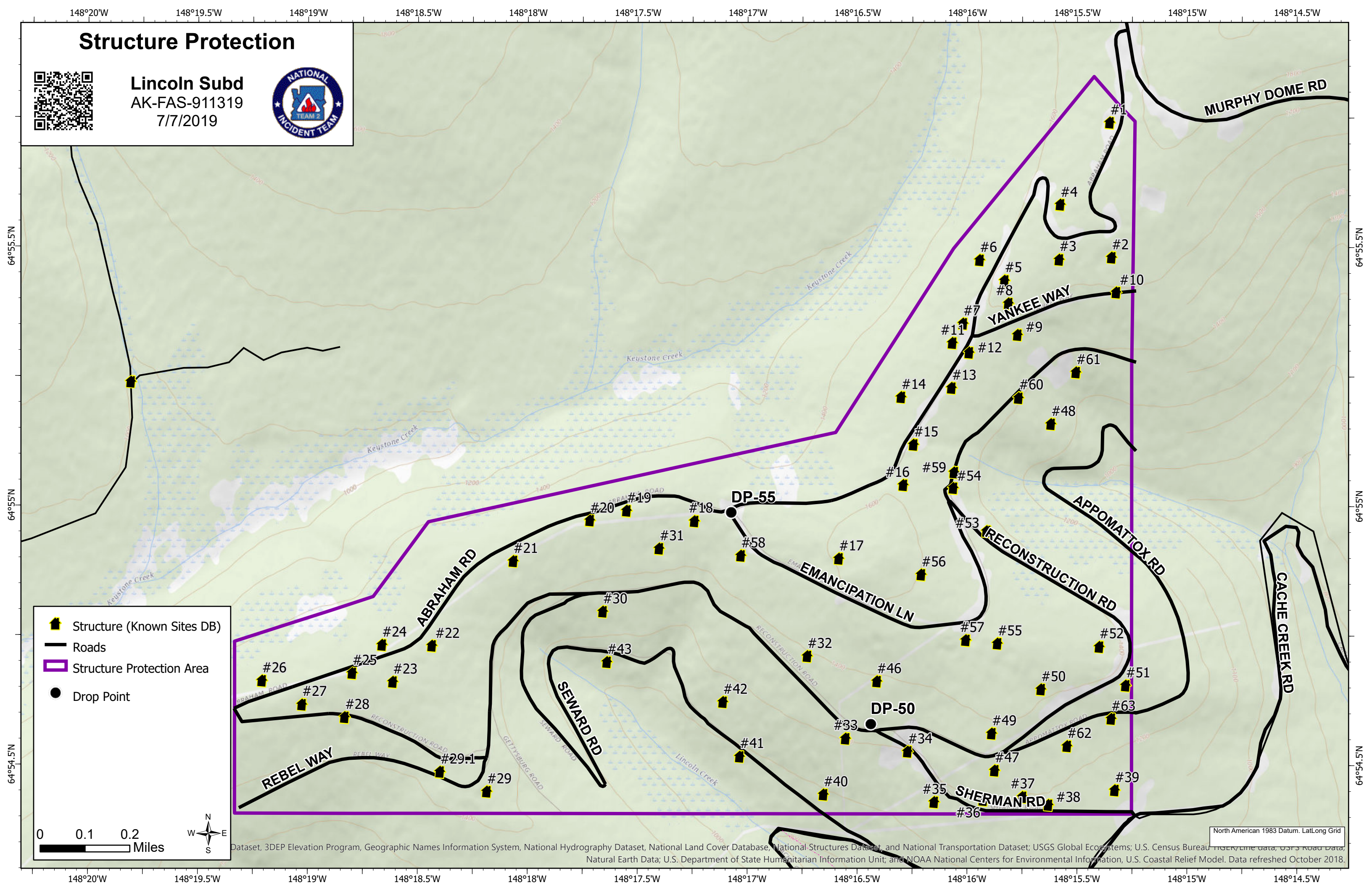
Wildfire Daily Fire Perimeter

0 0.5 1 1.5 Miles

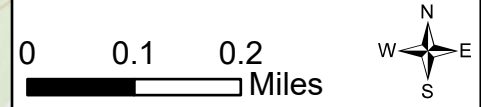
Structure Protection



Lincoln Subd
AK-FAS-911319
7/7/2019



- Structure (Known Sites DB)
- Roads
- Structure Protection Area
- Drop Point

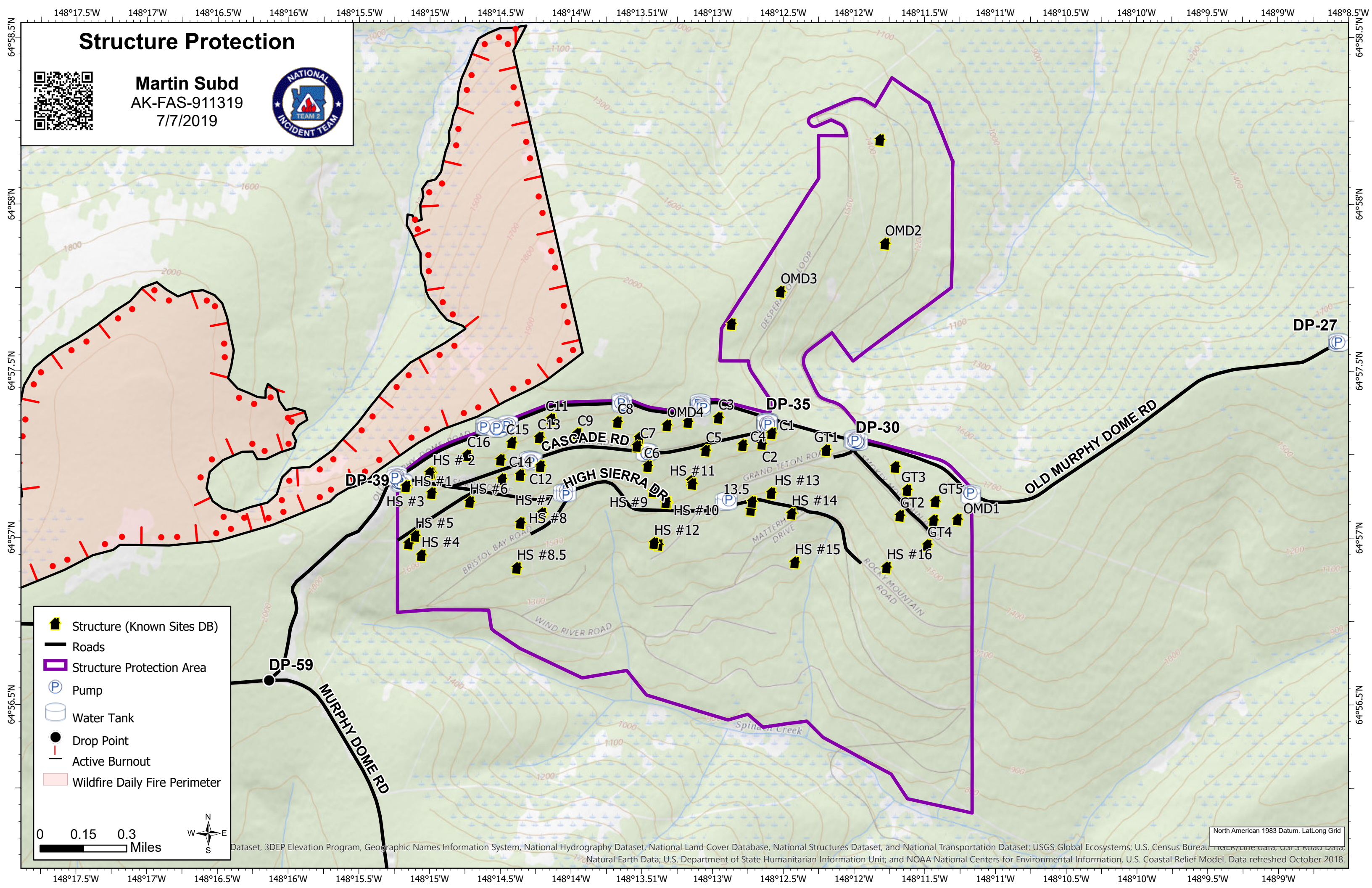


North American 1983 Datum, Lat/Long Grid
Dataset, 3DEP Elevation Program, Geographic Names Information System, National Hydrography Dataset, National Land Cover Database, National Structures Dataset, and National Transportation Dataset; USGS Global Ecosystems; U.S. Census Bureau TIGER/Line data, USFS Road Data, Natural Earth Data; U.S. Department of State Humanitarian Information Unit; and NOAA National Centers for Environmental Information, U.S. Coastal Relief Model. Data refreshed October 2018.

Structure Protection



Martin Subd
AK-FAS-911319
7/7/2019



Structure Protection



McCloud Subd
AK-FAS-911319
7/7/2019



DP-05

38

37

35

32

29

36

34

ERROL AVE

31

30

PAUL RD

8

27

28

17

16

13

12

15

14

11

10

9

DARLING AVE

7

6

25

P

P

PP

11

10

9

7

6

5

24

26

P

P

5

4

3

2

23

22

21

20

19

18

1

2

18

19

20

21

22

23

24

25

26

27

28

29

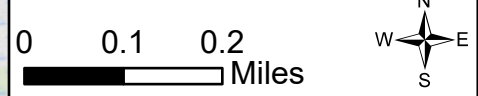
MCCALL ST

DP-20

DP-10

OLD MURPHY DOME RD

- Structure (Known Sites DB)
- Roads
- Structure Protection Area
- Pump
- Water Tank
- Drop Point
- Water Source



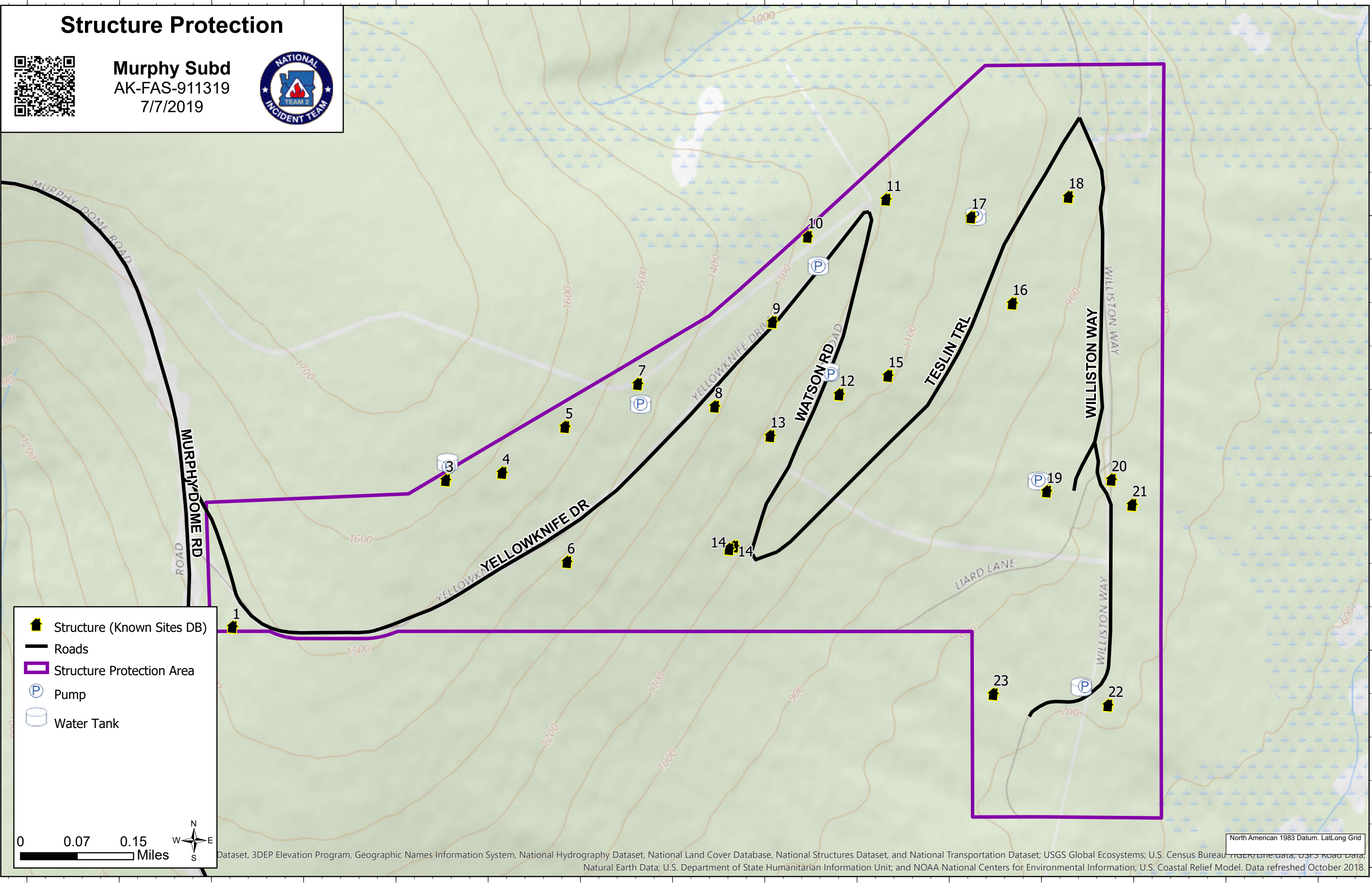
Dataset, 3DEP Elevation Program, Geographic Names Information System, National Hydrography Dataset, National Land Cover Database, National Structures Dataset, and National Transportation Dataset; USGS Global Ecosystems; U.S. Census Bureau TIGER/Line data; USFS Road Data; Natural Earth Data; U.S. Department of State Humanitarian Information Unit; and NOAA National Centers for Environmental Information, U.S. Coastal Relief Model. Data refreshed October 2018.

North American 1983 Datum, Lat/Long Grid

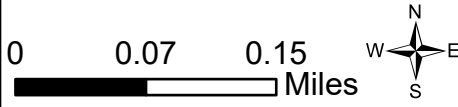
Structure Protection



Murphy Subd
AK-FAS-911319
7/7/2019



- Structure (Known Sites DB)
- Roads
- Structure Protection Area
- Pump
- Water Tank



North American 1983 Datum, Lat/Long Grid
Dataset, 3DEP Elevation Program, Geographic Names Information System, National Hydrography Dataset, National Land Cover Database, National Structures Dataset, and National Transportation Dataset; USGS Global Ecosystems; U.S. Census Bureau TIGER/Line data, USFS Road Data, Natural Earth Data; U.S. Department of State Humanitarian Information Unit; and NOAA National Centers for Environmental Information, U.S. Coastal Relief Model. Data refreshed October 2018.

Structure Protection



Perfect Perch Subd
AK-FAS-911319
7/7/2019

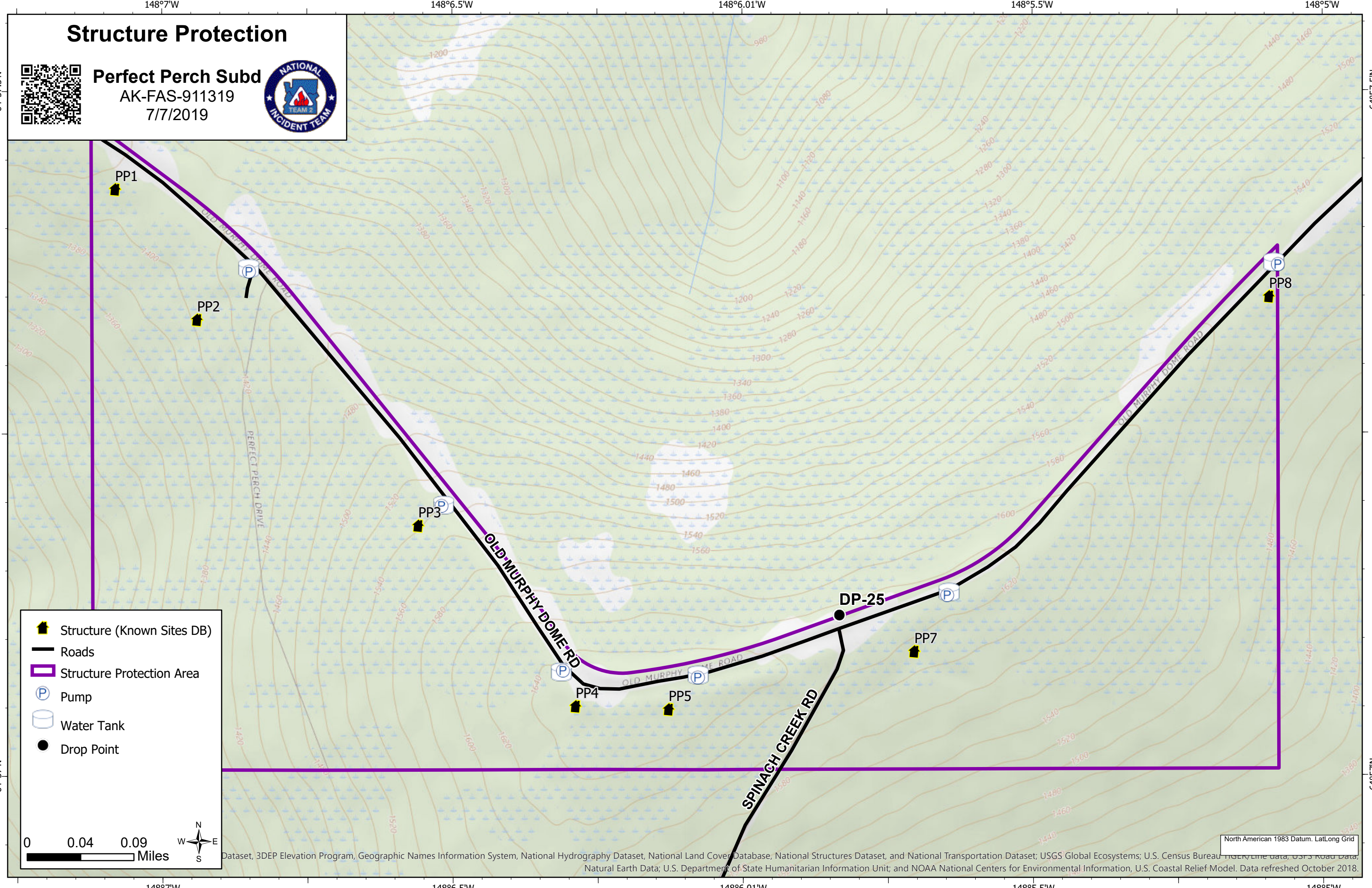


- Structure (Known Sites DB)
- Roads
- Structure Protection Area
- Pump
- Water Tank
- Drop Point

0 0.04 0.09 Miles



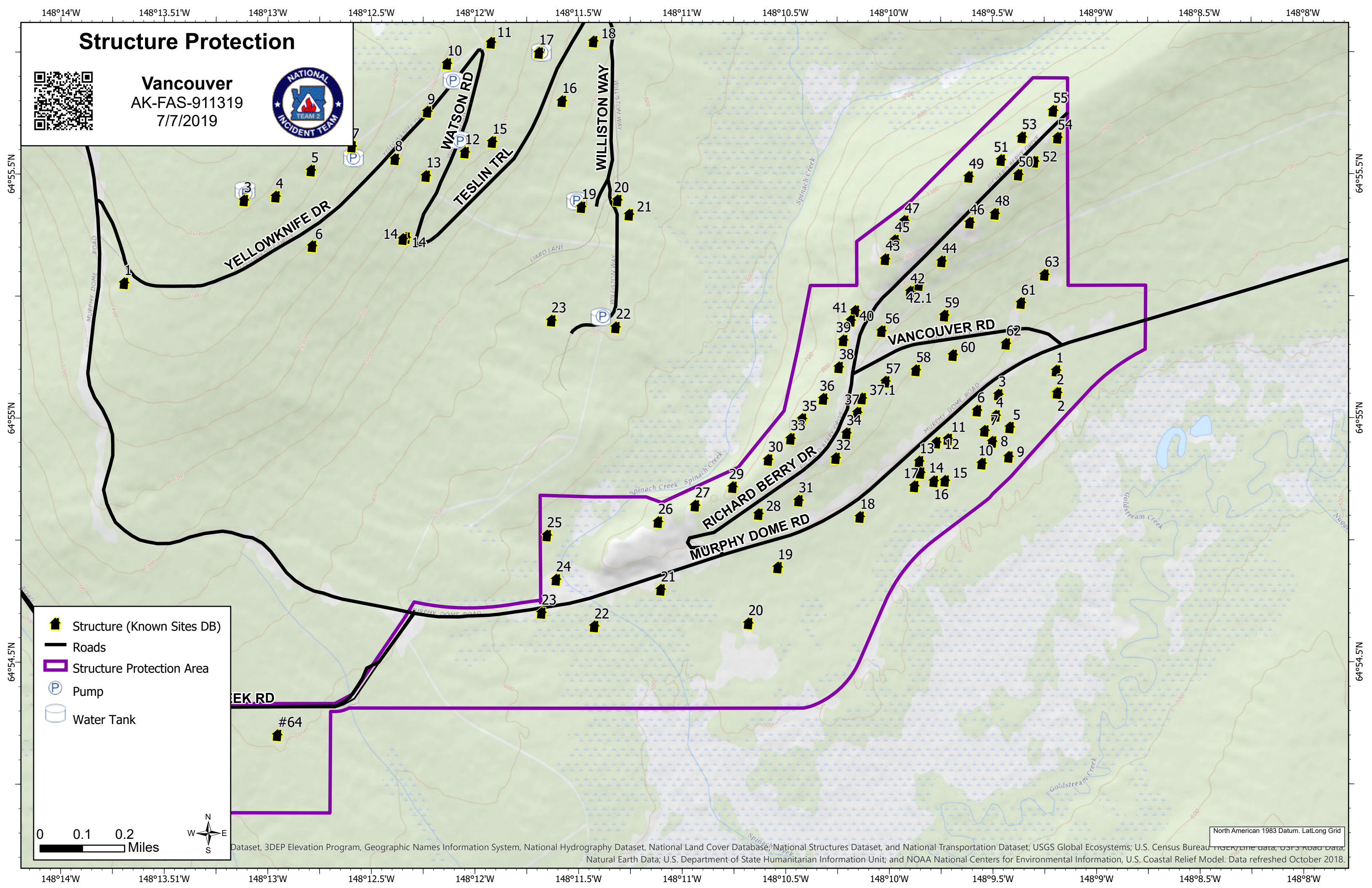
Dataset, 3DEP Elevation Program, Geographic Names Information System, National Hydrography Dataset, National Land Cover Database, National Structures Dataset, and National Transportation Dataset; USGS Global Ecosystems; U.S. Census Bureau TIGER/Line data, USFS Road Data, Natural Earth Data; U.S. Department of State Humanitarian Information Unit; and NOAA National Centers for Environmental Information, U.S. Coastal Relief Model. Data refreshed October 2018.



Structure Protection



Vancouver
AK-FAS-911319
7/7/2019



- Structure (Known Sites DB)
- Roads
- Structure Protection Area
- Pump
- Water Tank

0 0.1 0.2 Miles



North American 1983 Datum, Lat/Long Grid
Dataset, 3DEP Elevation Program, Geographic Names Information System, National Hydrography Dataset, National Land Cover Database, National Structures Dataset, and National Transportation Dataset; USGS Global Ecosystems; U.S. Census Bureau TIGER/Line data, USFS Road Data, Natural Earth Data; U.S. Department of State Humanitarian Information Unit; and NOAA National Centers for Environmental Information, U.S. Coastal Relief Model. Data refreshed October 2018.