

**SHOVEL CREEK FIRE
AK-FAS-911319
Aviation Map**

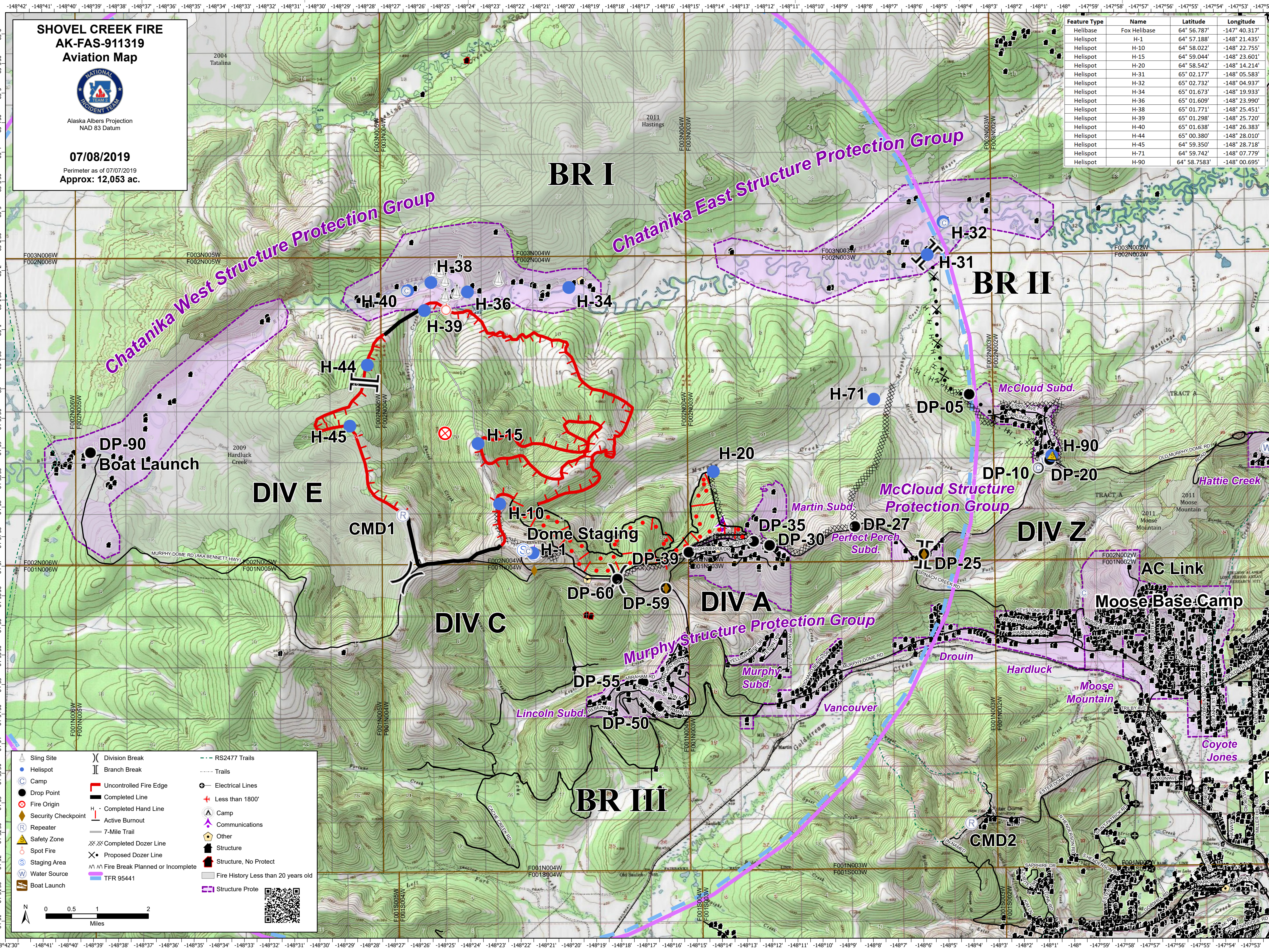


Alaska Albers Projection
NAD 83 Datum

07/08/2019

Perimeter as of 07/07/2019
Approx: 12,053 ac.

Feature Type	Name	Latitude	Longitude
Helibase	Fox Helibase	64° 56.787'	-147° 40.317'
Helispot	H-1	64° 57.188'	-148° 21.435'
Helispot	H-10	64° 58.022'	-148° 22.755'
Helispot	H-15	64° 59.044'	-148° 23.601'
Helispot	H-20	64° 58.542'	-148° 14.214'
Helispot	H-31	65° 02.177'	-148° 05.583'
Helispot	H-32	65° 02.732'	-148° 04.937'
Helispot	H-34	65° 01.673'	-148° 19.933'
Helispot	H-36	65° 01.609'	-148° 23.990'
Helispot	H-38	65° 01.771'	-148° 25.451'
Helispot	H-39	65° 01.298'	-148° 25.720'
Helispot	H-40	65° 01.638'	-148° 26.383'
Helispot	H-44	65° 00.380'	-148° 28.010'
Helispot	H-45	64° 59.350'	-148° 28.718'
Helispot	H-71	64° 59.742'	-148° 07.779'
Helispot	H-90	64° 58.7583'	-148° 00.695'



Sling Site	Division Break	RS2477 Trails
Helispot	Branch Break	Trails
Camp	Uncontrolled Fire Edge	Electrical Lines
Drop Point	Completed Line	Less than 1800'
Fire Origin	Completed Hand Line	Camp
Security Checkpoint	Active Burnout	Communications
Repeater	7-Mile Trail	Other
Safety Zone	Completed Dozer Line	Structure
Spot Fire	Proposed Dozer Line	Structure, No Protect
Staging Area	Fire Break Planned or Incomplete	Fire History Less than 20 years old
Water Source	TFR 95441	Structure Prote
Boat Launch		