

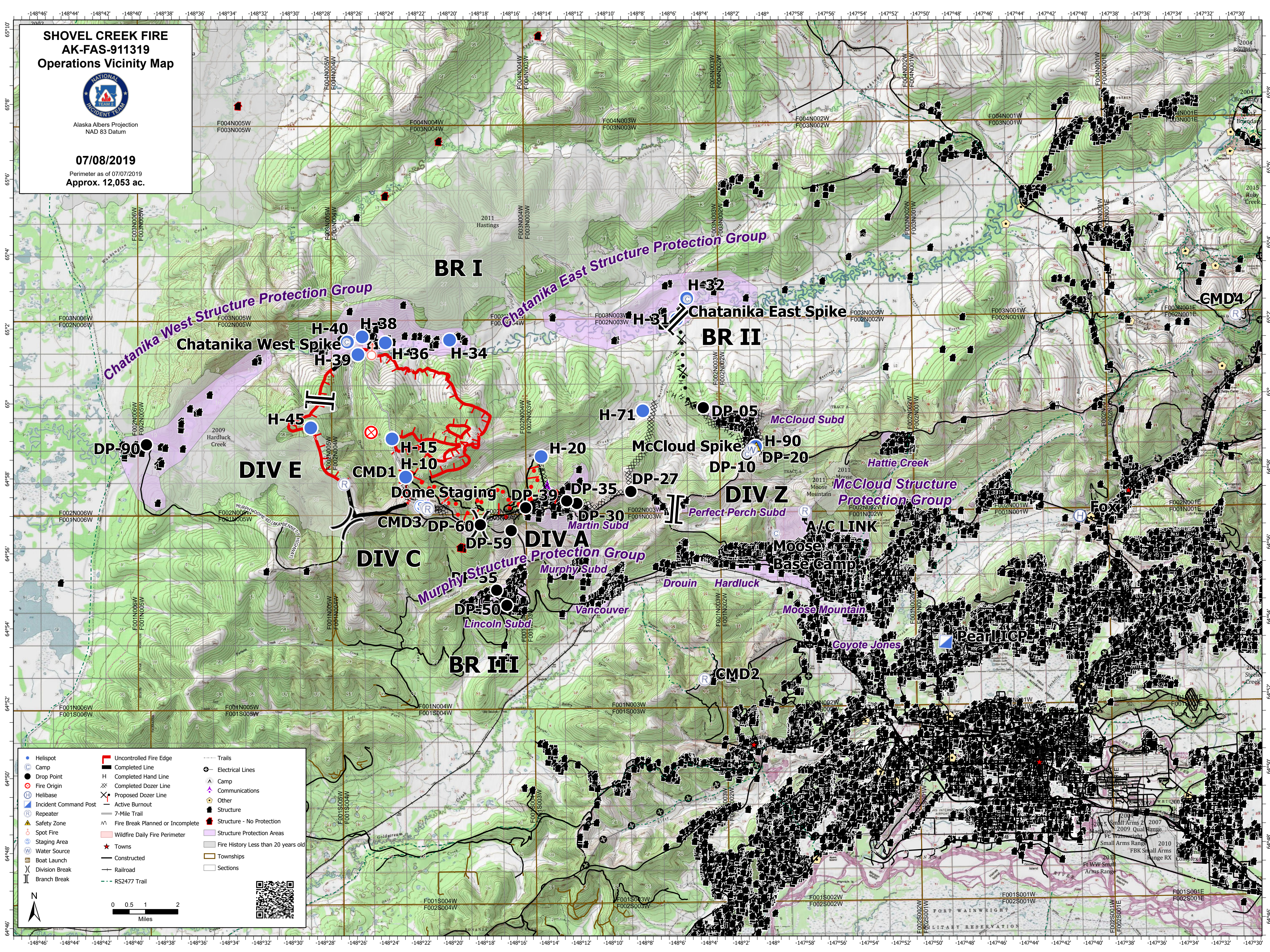
**SHOVEL CREEK FIRE
AK-FAS-911319
Operations Vicinity Map**



Alaska Albers Projection
NAD 83 Datum

07/08/2019

Perimeter as of 07/07/2019
Approx. 12,053 ac.



Helispot	Uncontrolled Fire Edge	Trails
Camp	Completed Line	Electrical Lines
Drop Point	Completed Hand Line	Camp
Fire Origin	Completed Dozer Line	Communications
Helibase	Proposed Dozer Line	Other
Incident Command Post	Active Burnout	Structure
Repeater	Fire Break Planned or Incomplete	Structure - No Protection
Safety Zone	Wildfire Daily Fire Perimeter	Structure Protection Areas
Spot Fire	Constructed	Fire History Less than 20 years old
Staging Area	Railroad	Townships
Water Source	Division Break	Sections
Boat Launch	Branch Break	
Division Break		
Branch Break		
RS2477 Trail		

