

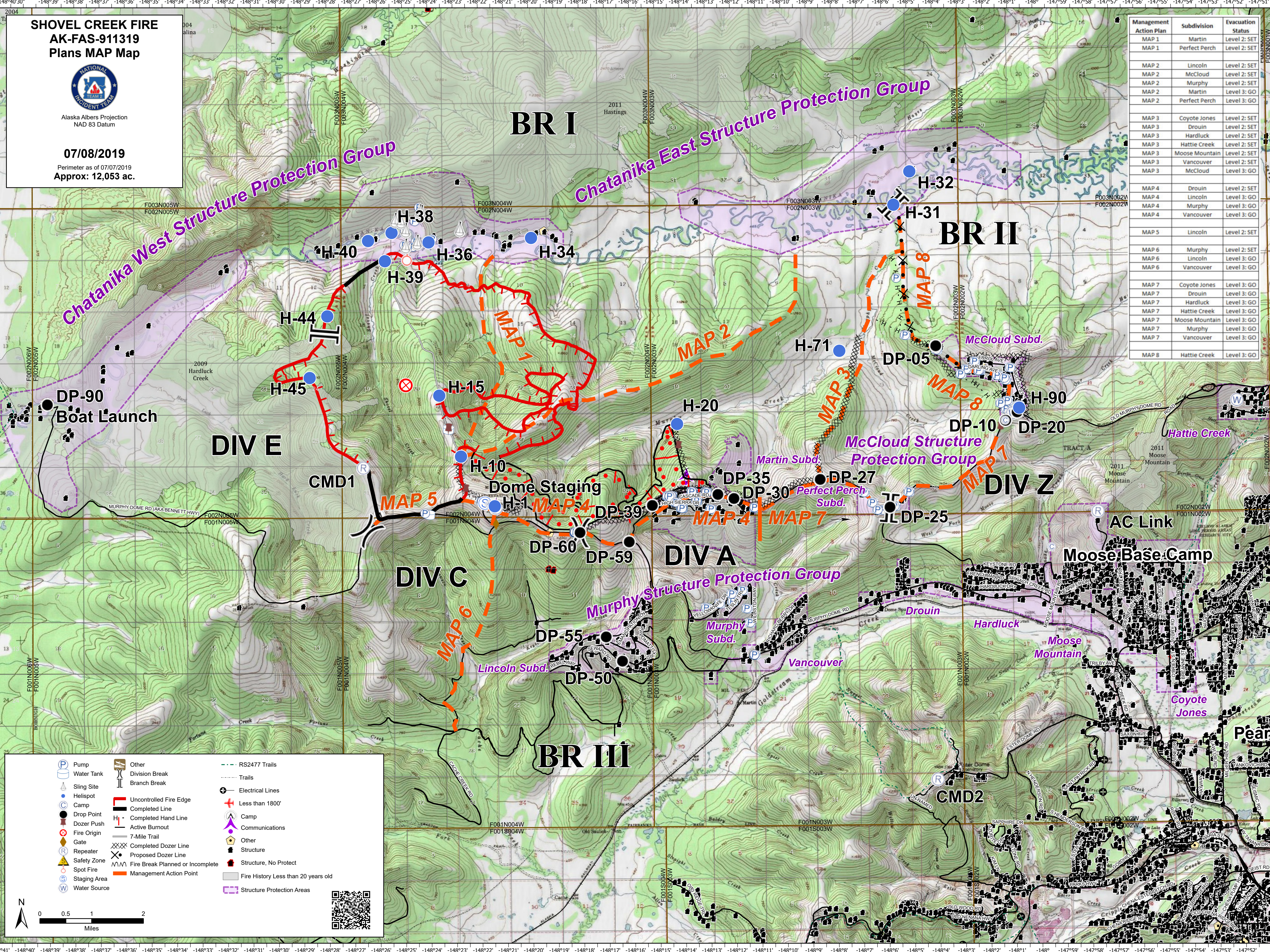
**SHOVEL CREEK FIRE
AK-FAS-911319
Plans MAP Map**



Alaska Albers Projection
NAD 83 Datum

07/08/2019
Perimeter as of 07/07/2019
Approx: 12,053 ac.

Management Action Plan	Subdivision	Evacuation Status
MAP 1	Martin	Level 2: SET
MAP 1	Perfect Perch	Level 2: SET
MAP 2	Lincoln	Level 2: SET
MAP 2	McCloud	Level 2: SET
MAP 2	Murphy	Level 3: GO
MAP 2	Martin	Level 3: GO
MAP 2	Perfect Perch	Level 3: GO
MAP 3	Coyote Jones	Level 2: SET
MAP 3	Drouin	Level 2: SET
MAP 3	Hardluck	Level 2: SET
MAP 3	Hattie Creek	Level 2: SET
MAP 3	Moose Mountain	Level 2: SET
MAP 3	Vancouver	Level 2: SET
MAP 3	McCloud	Level 3: GO
MAP 4	Drouin	Level 2: SET
MAP 4	Lincoln	Level 3: GO
MAP 4	Murphy	Level 3: GO
MAP 4	Vancouver	Level 3: GO
MAP 5	Lincoln	Level 2: SET
MAP 6	Murphy	Level 2: SET
MAP 6	Lincoln	Level 3: GO
MAP 6	Vancouver	Level 3: GO
MAP 7	Coyote Jones	Level 3: GO
MAP 7	Drouin	Level 3: GO
MAP 7	Hardluck	Level 3: GO
MAP 7	Hattie Creek	Level 3: GO
MAP 7	Moose Mountain	Level 3: GO
MAP 7	Murphy	Level 3: GO
MAP 7	Vancouver	Level 3: GO
MAP 8	Hattie Creek	Level 3: GO



Pump	Other	RS2477 Trails
Water Tank	Division Break	Trails
Sling Site	Branch Break	Electrical Lines
Camp	Uncontrolled Fire Edge	Less than 1800'
Drop Point	Completed Line	Camp
Dozer Push	Completed Hand Line	Communications
Fire Origin	Active Burnout	Other
Gate	7-Mile Trail	Structure
Repeater	Completed Dozer Line	Structure, No Protect
Safety Zone	Proposed Dozer Line	Fire History Less than 20 years old
Spot Fire	Fire Break Planned or Incomplete	Structure Protection Areas
Staging Area	Management Action Point	
Water Source		

