

**SHOVEL CREEK FIRE
AK-FAS-911319
Aviation Map**

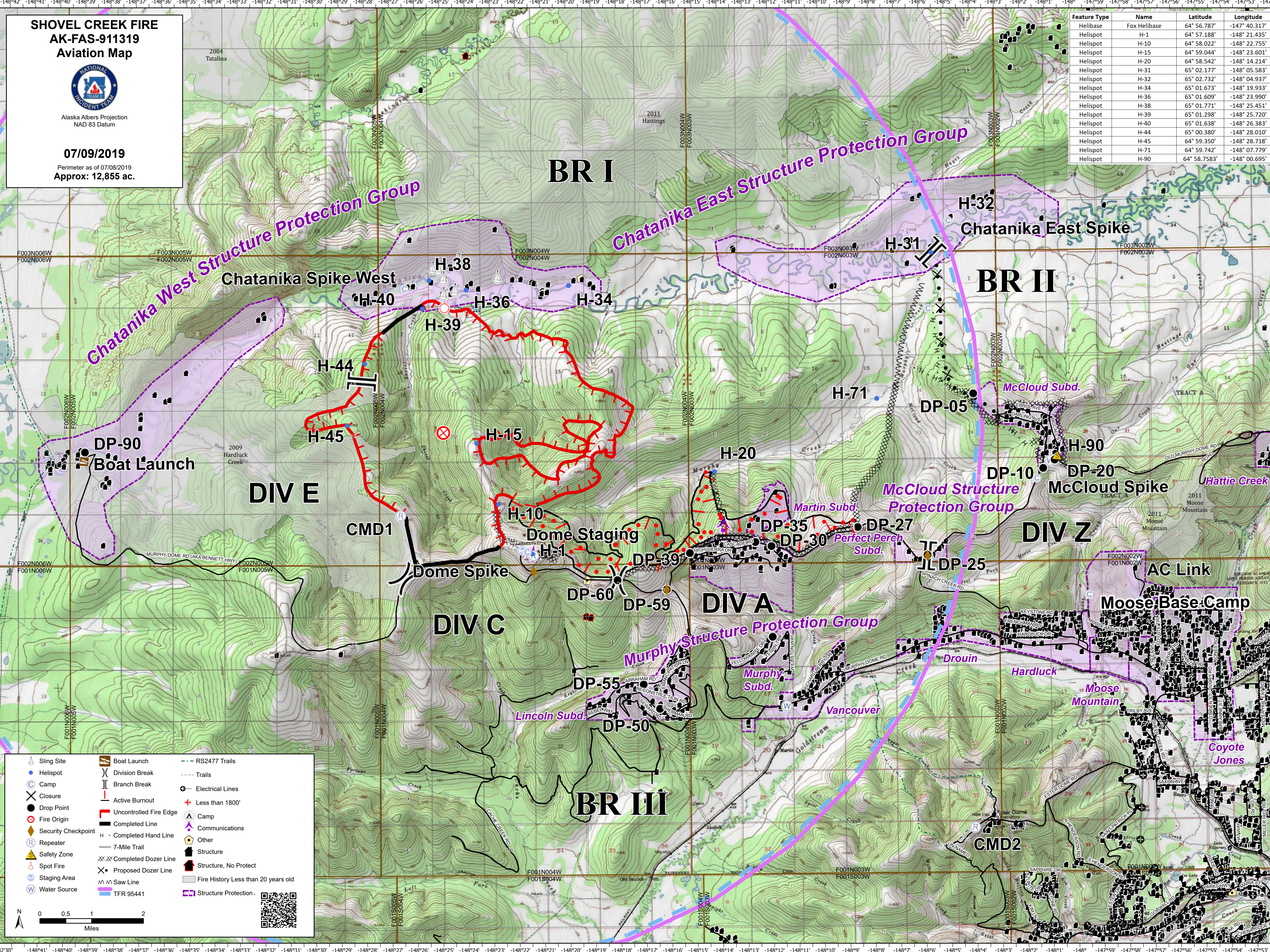


Alaska Albers Projection
NAD 83 Datum

07/09/2019

Perimeter as of 07/08/2019
Approx: 12,855 ac.

Feature Type	Name	Latitude	Longitude
Helibase	Fox Helibase	64° 56.787'	-147° 40.317'
Helispot	H-1	64° 57.188'	-148° 21.435'
Helispot	H-10	64° 58.022'	-148° 22.755'
Helispot	H-15	64° 59.044'	-148° 23.601'
Helispot	H-20	64° 58.542'	-148° 14.214'
Helispot	H-31	65° 02.177'	-148° 05.583'
Helispot	H-32	65° 02.732'	-148° 04.937'
Helispot	H-34	65° 01.673'	-148° 19.933'
Helispot	H-36	65° 01.609'	-148° 23.990'
Helispot	H-38	65° 01.771'	-148° 25.451'
Helispot	H-39	65° 01.298'	-148° 25.720'
Helispot	H-40	65° 01.638'	-148° 26.383'
Helispot	H-44	65° 00.380'	-148° 28.010'
Helispot	H-45	64° 59.350'	-148° 28.718'
Helispot	H-71	64° 59.742'	-148° 07.779'
Helispot	H-90	64° 58.7583'	-148° 00.695'



Sling Site	Boat Launch	RS2477 Trails
Helispot	Division Break	Trails
Camp	Branch Break	Electrical Lines
Closure	Active Burnout	Less than 1800'
Drop Point	Completed Line	Camp
Fire Origin	Completed Hand Line	Communications
Security Checkpoint	Completed Dozer Line	Other
Repeater	Proposed Dozer Line	Structure
Safety Zone	Saw Line	Structure, No Protect
Spot Fire	TFR 95441	Fire History Less than 20 years old
Staging Area		Structure Protection
Water Source		

0 0.5 1 2 Miles