

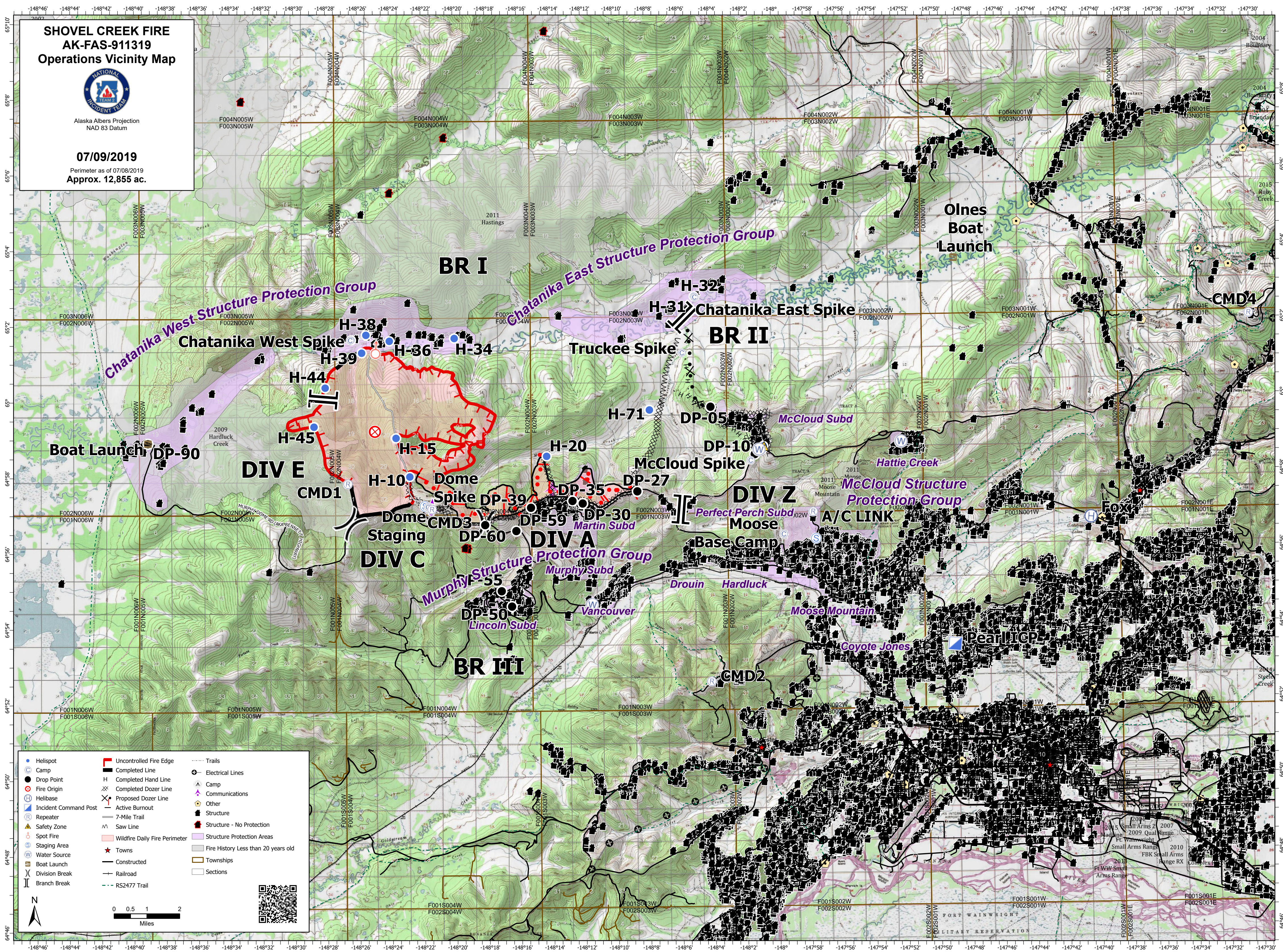
**SHOVEL CREEK FIRE  
AK-FAS-911319  
Operations Vicinity Map**



Alaska Albers Projection  
NAD 83 Datum

**07/09/2019**

Perimeter as of 07/08/2019  
Approx. 12,855 ac.



Helispot	Uncontrolled Fire Edge	Trails
Camp	Completed Line	Electrical Lines
Drop Point	Completed Hand Line	Camp
Fire Origin	Completed Dozer Line	Communications
Helibase	Proposed Dozer Line	Other
Incident Command Post	Active Burnout	Structure
Repeater	7-Mile Trail	Structure - No Protection
Safety Zone	Saw Line	Structure Protection Areas
Spot Fire	Wildfire Daily Fire Perimeter	Fire History Less than 20 years old
Staging Area	Constructed	Townships
Water Source	Railroad	Sections
Boat Launch	RS2477 Trail	
Division Break		
Branch Break		

