

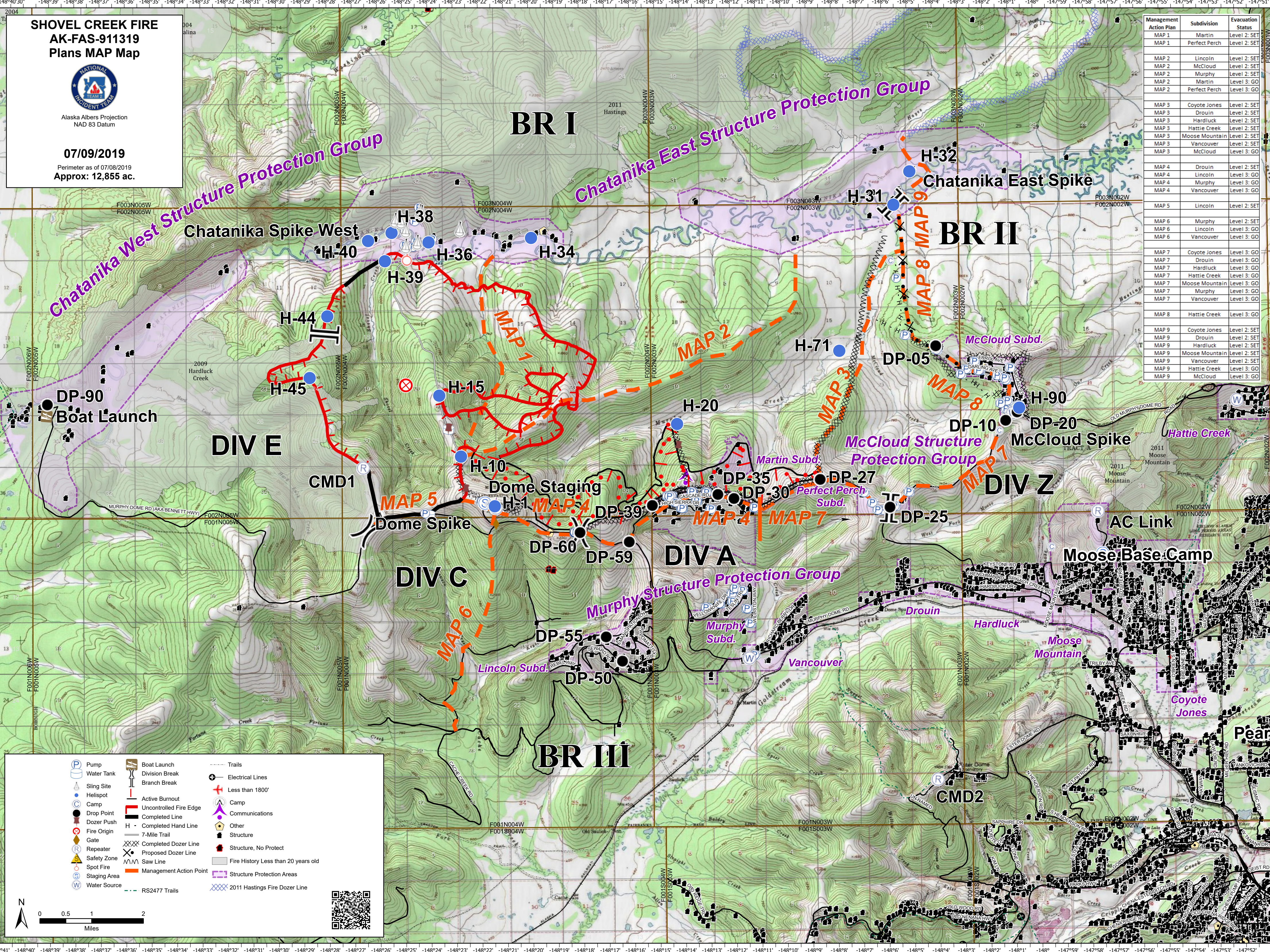
**SHOVEL CREEK FIRE  
AK-FAS-911319  
Plans MAP Map**



Alaska Albers Projection  
NAD 83 Datum

**07/09/2019**  
Perimeter as of 07/08/2019  
Approx: 12,855 ac.

Management Action Plan	Subdivision	Evacuation Status
MAP 1	Martin	Level 2: SET
MAP 1	Perfect Perch	Level 2: SET
MAP 2	Lincoln	Level 2: SET
MAP 2	McCloud	Level 2: SET
MAP 2	Murphy	Level 2: SET
MAP 2	Martin	Level 2: SET
MAP 2	Perfect Perch	Level 3: GO
MAP 3	Coyote Jones	Level 2: SET
MAP 3	Drouin	Level 2: SET
MAP 3	Hardluck	Level 2: SET
MAP 3	Hattie Creek	Level 2: SET
MAP 3	Moose Mountain	Level 2: SET
MAP 3	Vancouver	Level 2: SET
MAP 3	McCloud	Level 3: GO
MAP 4	Drouin	Level 2: SET
MAP 4	Lincoln	Level 3: GO
MAP 4	Murphy	Level 3: GO
MAP 4	Vancouver	Level 3: GO
MAP 5	Lincoln	Level 2: SET
MAP 6	Murphy	Level 2: SET
MAP 6	Lincoln	Level 3: GO
MAP 6	Vancouver	Level 3: GO
MAP 7	Coyote Jones	Level 3: GO
MAP 7	Drouin	Level 3: GO
MAP 7	Hardluck	Level 3: GO
MAP 7	Hattie Creek	Level 3: GO
MAP 7	Moose Mountain	Level 3: GO
MAP 7	Murphy	Level 3: GO
MAP 7	Vancouver	Level 3: GO
MAP 8	Hattie Creek	Level 3: GO
MAP 9	Coyote Jones	Level 2: SET
MAP 9	Drouin	Level 2: SET
MAP 9	Hardluck	Level 2: SET
MAP 9	Moose Mountain	Level 2: SET
MAP 9	Vancouver	Level 2: SET
MAP 9	Hattie Creek	Level 3: GO
MAP 9	McCloud	Level 3: GO



Pump	Boat Launch	Trails
Water Tank	Division Break	Electrical Lines
Sling Site	Branch Break	Less than 1800'
Helispot	Active Burnout	Camp
Camp	Uncontrolled Fire Edge	Other
Drop Point	Completed Line	Structure
Dozer Push	Completed Hand Line	Structure, No Protect
Fire Origin	7-Mile Trail	Fire History Less than 20 years old
Gate	Completed Dozer Line	Structure Protection Areas
Repeater	Proposed Dozer Line	2011 Hastings Fire Dozer Line
Safety Zone	Saw Line	
Spot Fire	Management Action Point	
Staging Area	RS2477 Trails	
Water Source		

