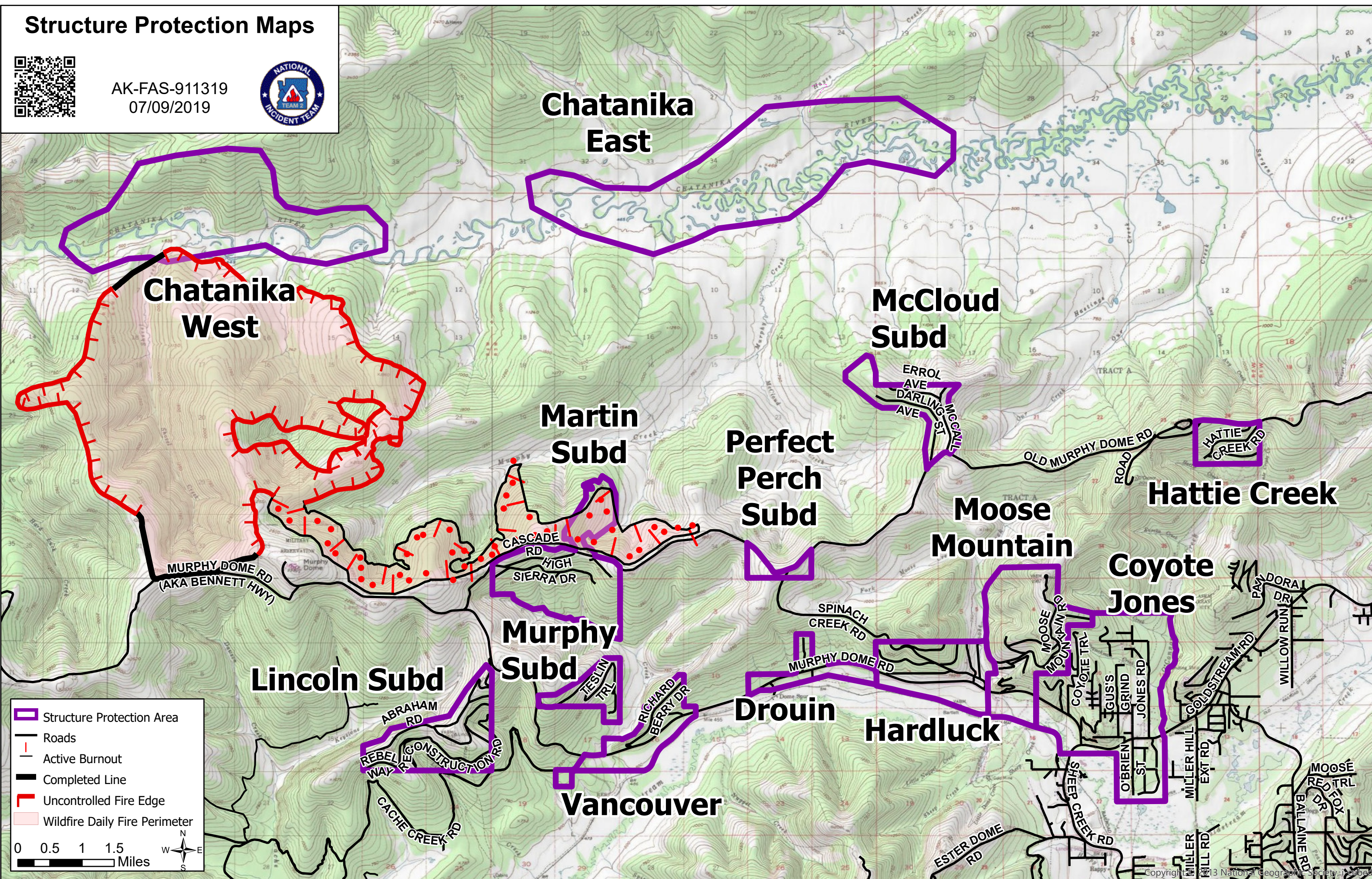


Structure Protection Maps



AK-FAS-911319
07/09/2019



Chatanika East

Chatanika West

McCloud Subd

Martin Subd

Perfect Perch Subd

Moose Mountain

Hattie Creek

Coyote Jones

Murphy Subd

Drouin

Hardluck

Lincoln Subd

Vancouver

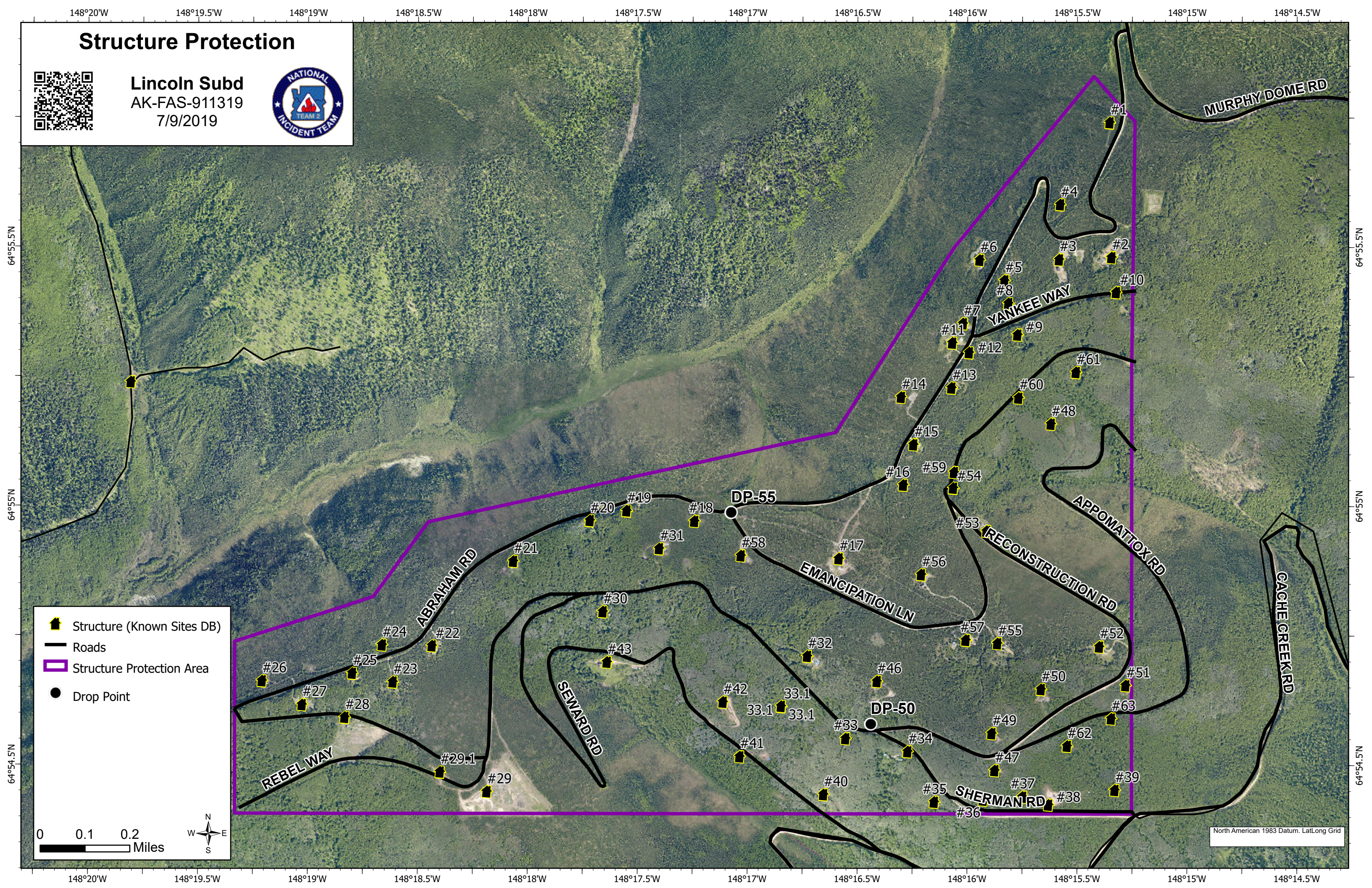
Structure Protection Area
 Roads
 Active Burnout
 Completed Line
 Uncontrolled Fire Edge
 Wildfire Daily Fire Perimeter

0 0.5 1 1.5 Miles

Structure Protection



Lincoln Subd
AK-FAS-911319
7/9/2019



- Structure (Known Sites DB)
- Roads
- Structure Protection Area
- Drop Point

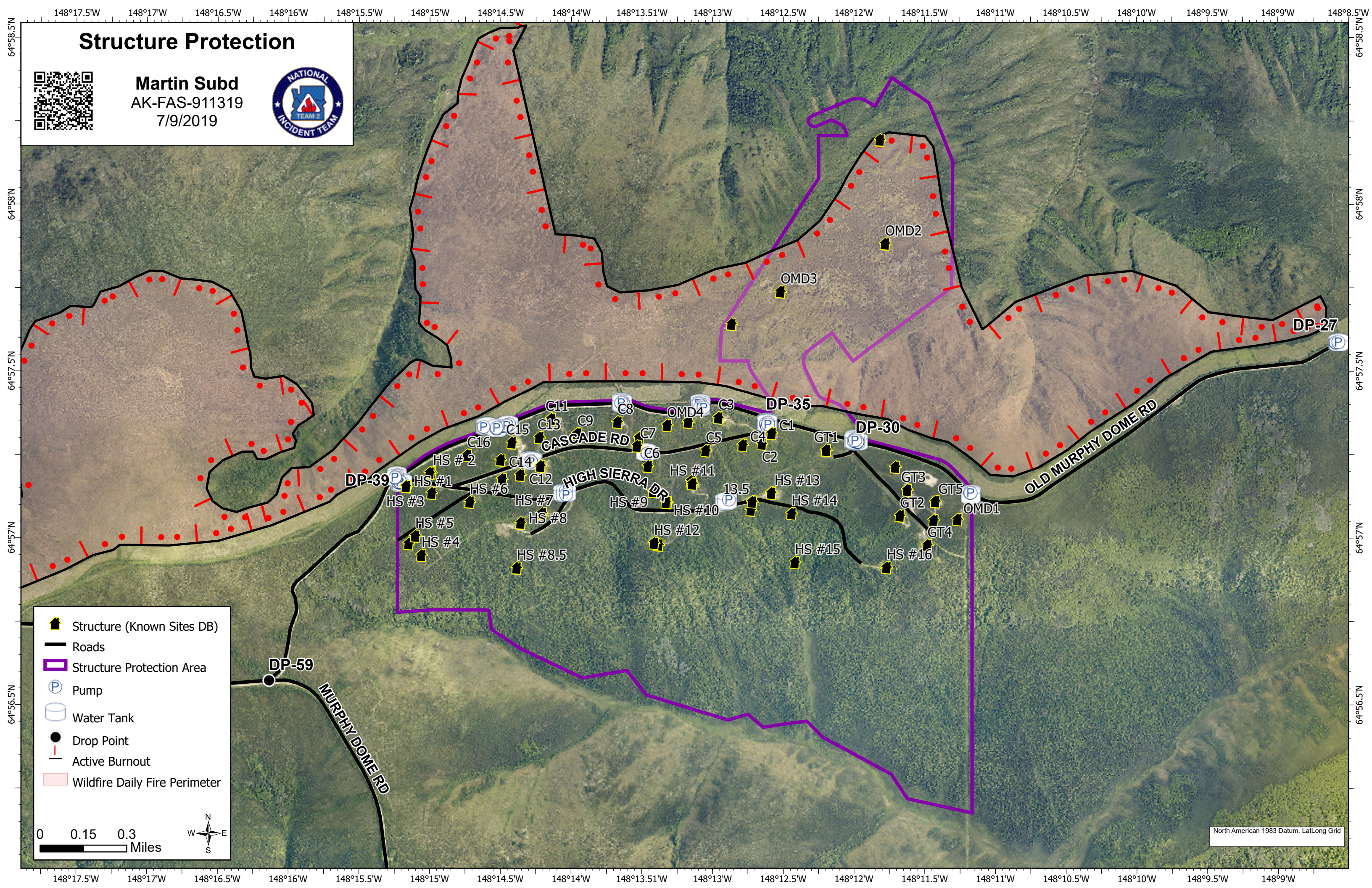
0 0.1 0.2 Miles

North American 1983 Datum, Lat/Long Grid

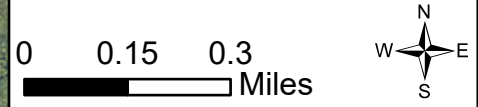
Structure Protection



Martin Subd
AK-FAS-911319
7/9/2019



- Structure (Known Sites DB)
- Roads
- Structure Protection Area
- Pump
- Water Tank
- Drop Point
- Active Burnout
- Wildfire Daily Fire Perimeter



North American 1983 Datum, LatLong Grid

Structure Protection



McCloud Subd
AK-FAS-911319
7/9/2019



DP-05

38

37

35

32

29

36

34

ERROL AVE

PAUL RD

DARLING AVE

MCGALL ST

17

16

13

12

31

30

28

15

14

11

10

9

8

27

25

26

7

6

5

4

3

24

23

1

2

22

21

20

19

18

DP-10

DP-20

OLD MURPHY DOME RD

- Structure (Known Sites DB)
- Roads
- Structure Protection Area
- Pump
- Water Tank
- Drop Point
- Water Source

0 0.1 0.2 Miles



North American 1983 Datum. LatLong Grid

148°14'W

148°13.5'W

148°13'W

148°12.5'W

148°12'W

148°11.5'W

148°11'W

Structure Protection



Murphy Subd
AK-FAS-911319
7/9/2019



64°55.5'N

64°55.5'N

MURPHY DOME RD

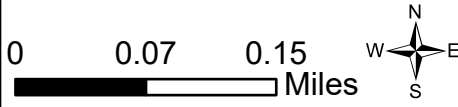
YELLOWKNIFE DR

WATSON RD

TESLIN TRL

WILLISTON WAY

- Structure (Known Sites DB)
- Roads
- Structure Protection Area
- Pump
- Water Tank



North American 1983 Datum, Lat/Long Grid

64°55'N

64°55'N

148°14'W

148°13.5'W

148°13'W

148°12.5'W

148°12'W

148°11.5'W

148°11'W

1

P3

4

5

7

14

13

8

9

10

15

P

P11

17

16

P19

23

20

21

22

18

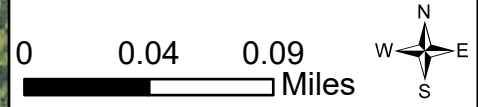
Structure Protection



Perfect Perch Subd
AK-FAS-911319
7/9/2019



- Structure (Known Sites DB)
- Roads
- Structure Protection Area
- Pump
- Water Tank
- Drop Point

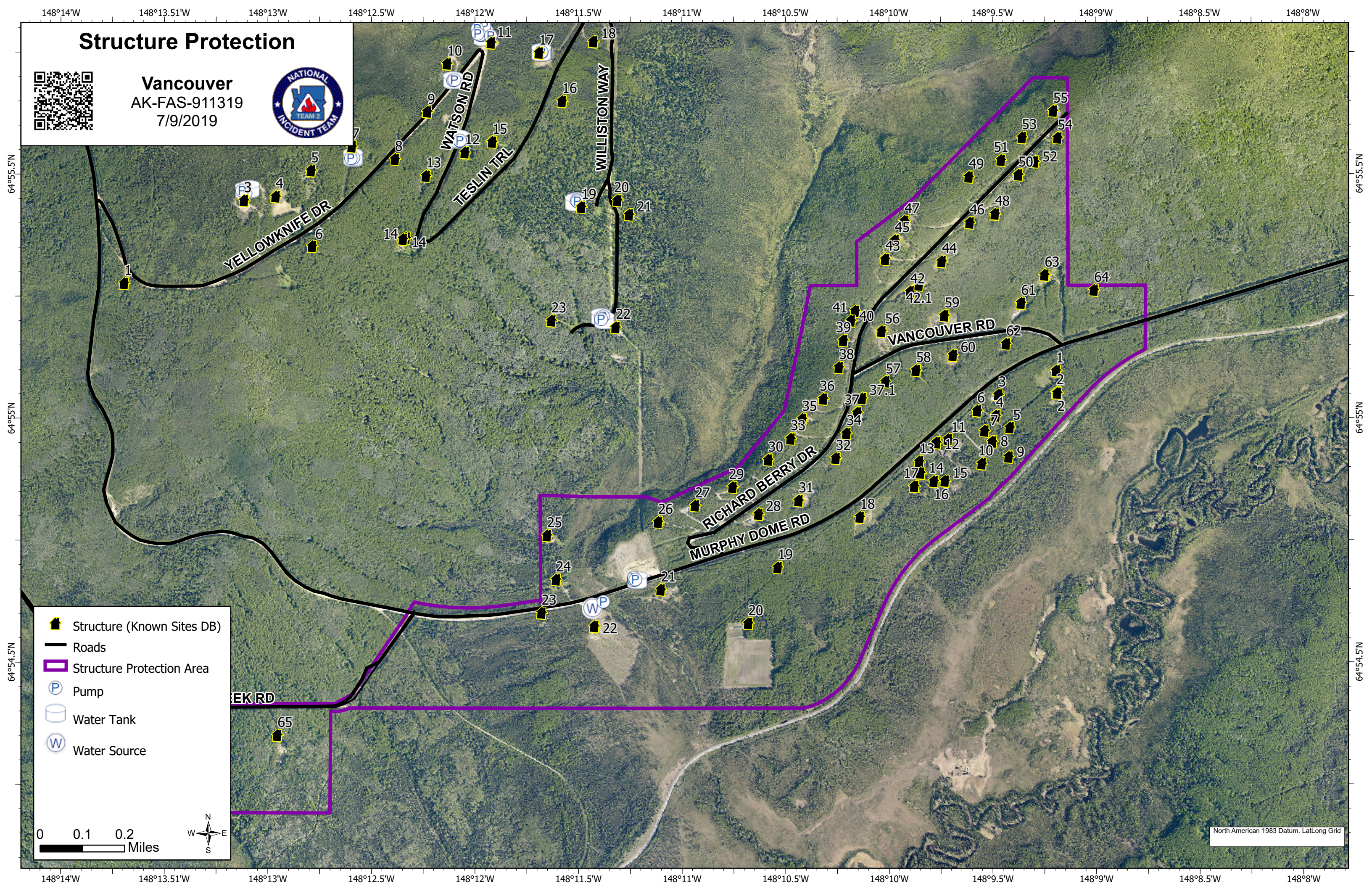


North American 1983 Datum, Lat/Long Grid

Structure Protection



Vancouver
AK-FAS-911319
7/9/2019



- Structure (Known Sites DB)
- Roads
- Structure Protection Area
- Pump
- Water Tank
- Water Source

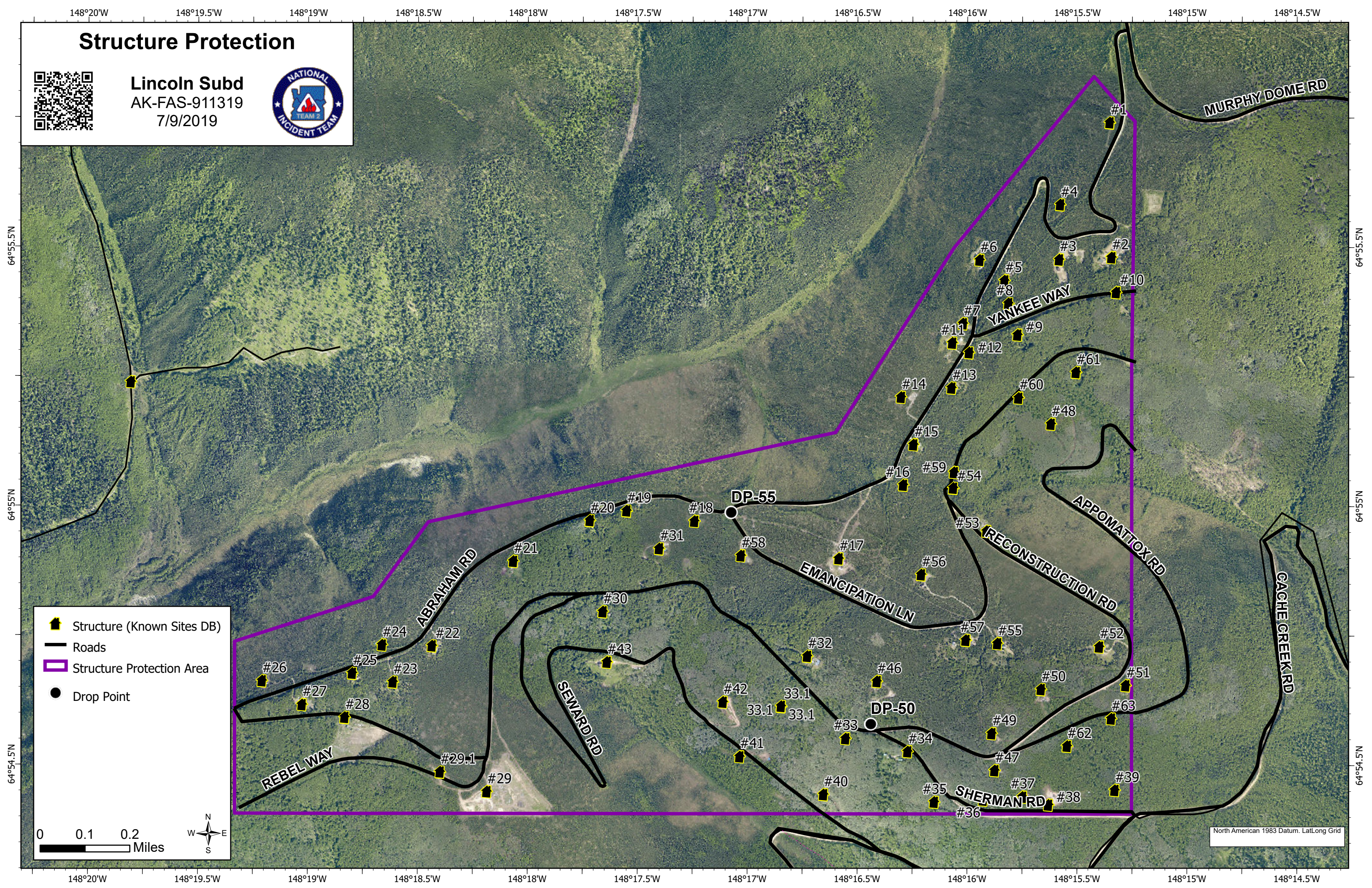
0 0.1 0.2 Miles

North American 1983 Datum. Lat/Long Grid

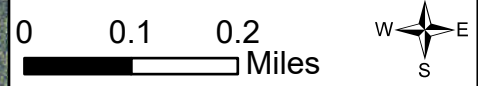
Structure Protection



Lincoln Subd
AK-FAS-911319
7/9/2019



- Structure (Known Sites DB)
- Roads
- Structure Protection Area
- Drop Point

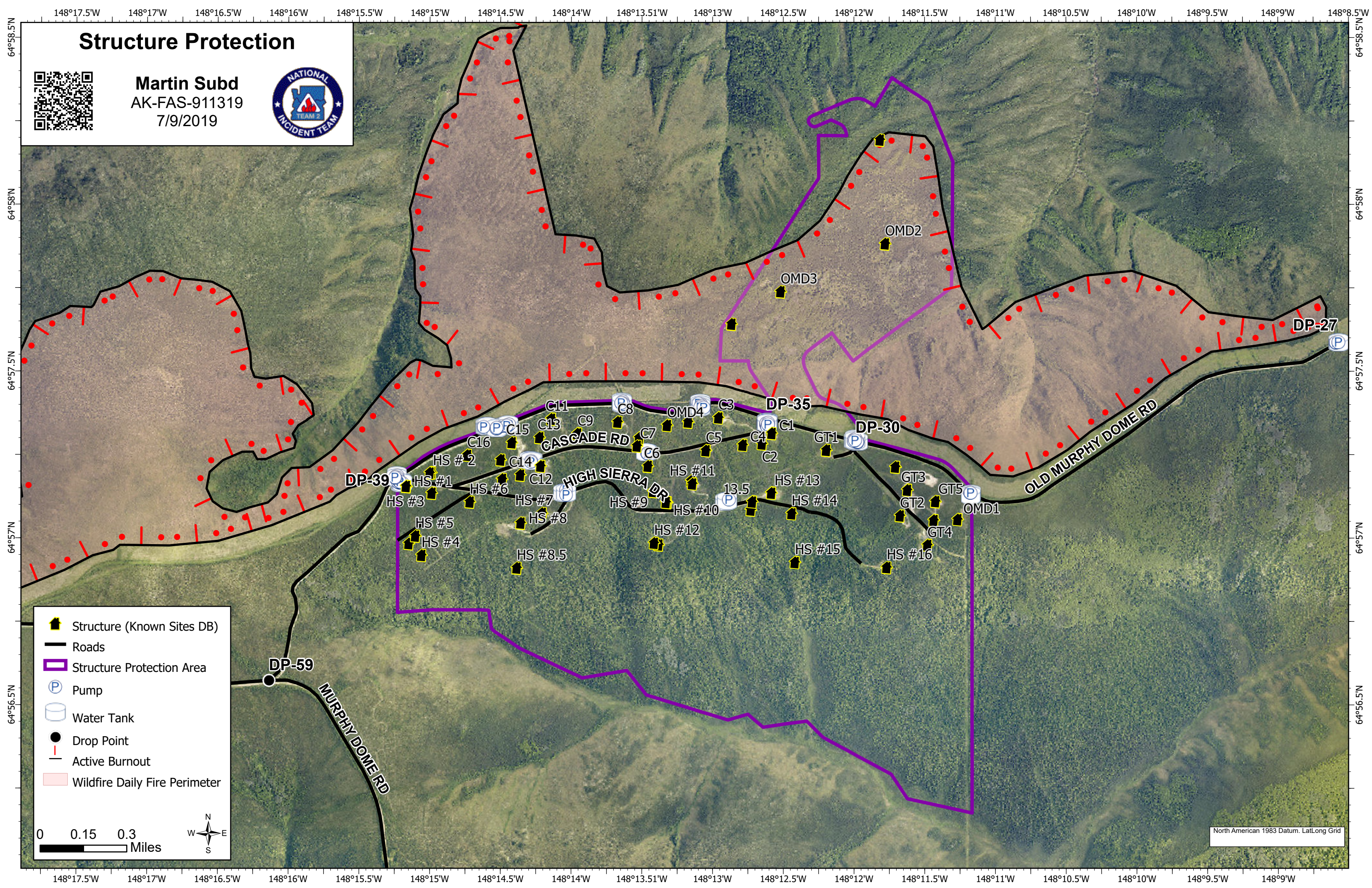


North American 1983 Datum. Lat/Long Grid

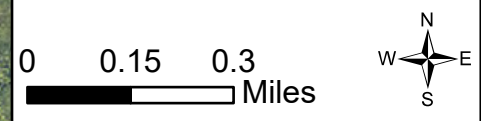
Structure Protection



Martin Subd
AK-FAS-911319
7/9/2019



- Structure (Known Sites DB)
- Roads
- Structure Protection Area
- Pump
- Water Tank
- Drop Point
- Active Burnout
- Wildfire Daily Fire Perimeter

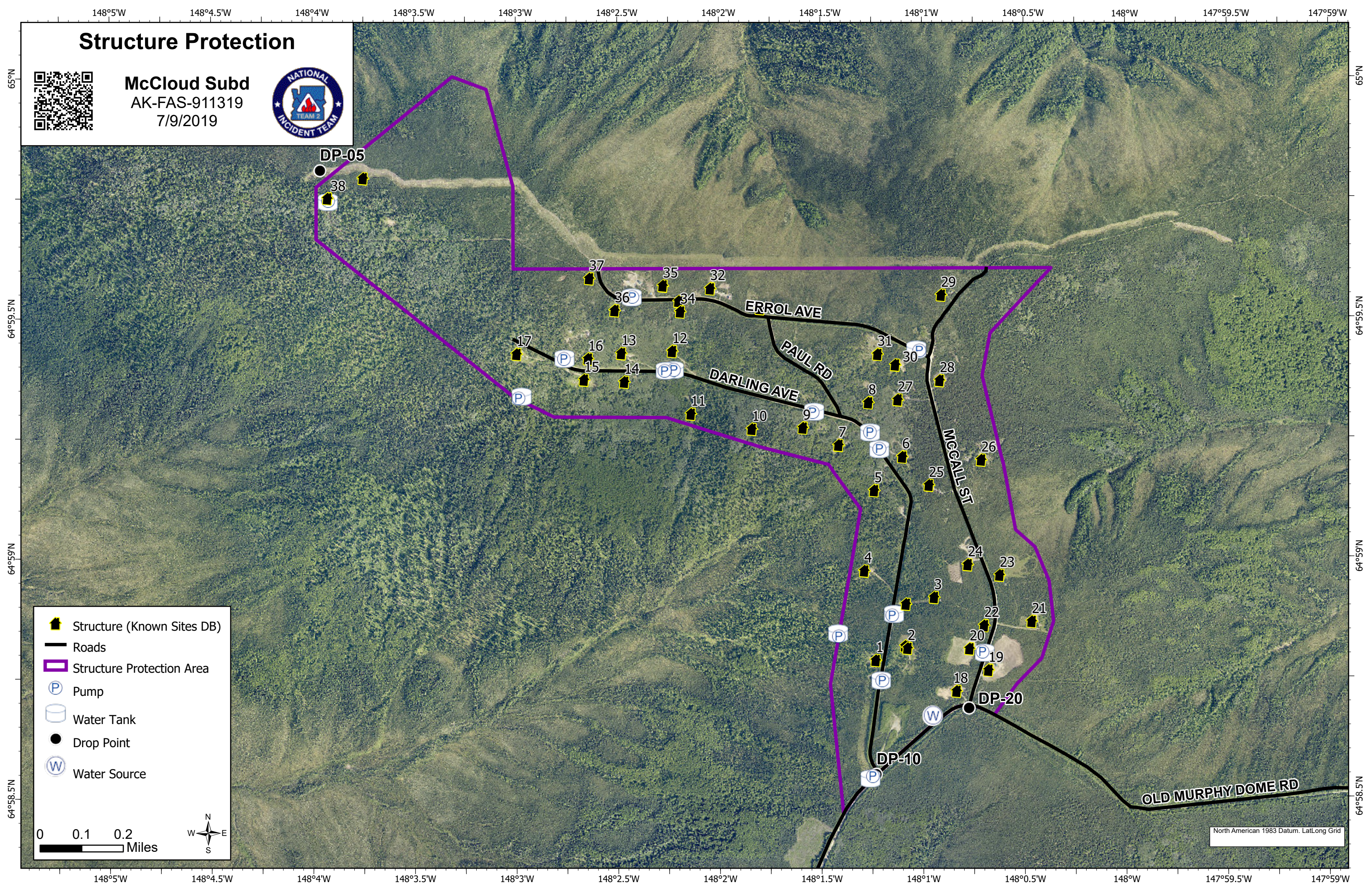


North American 1983 Datum, Lat/Long Grid

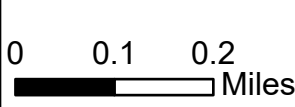
Structure Protection



McCloud Subd
AK-FAS-911319
7/9/2019



- Structure (Known Sites DB)
- Roads
- Structure Protection Area
- Pump
- Water Tank
- Drop Point
- Water Source



North American 1983 Datum. LatLong Grid

148°14'W

148°13.5'W

148°13'W

148°12.5'W

148°12'W

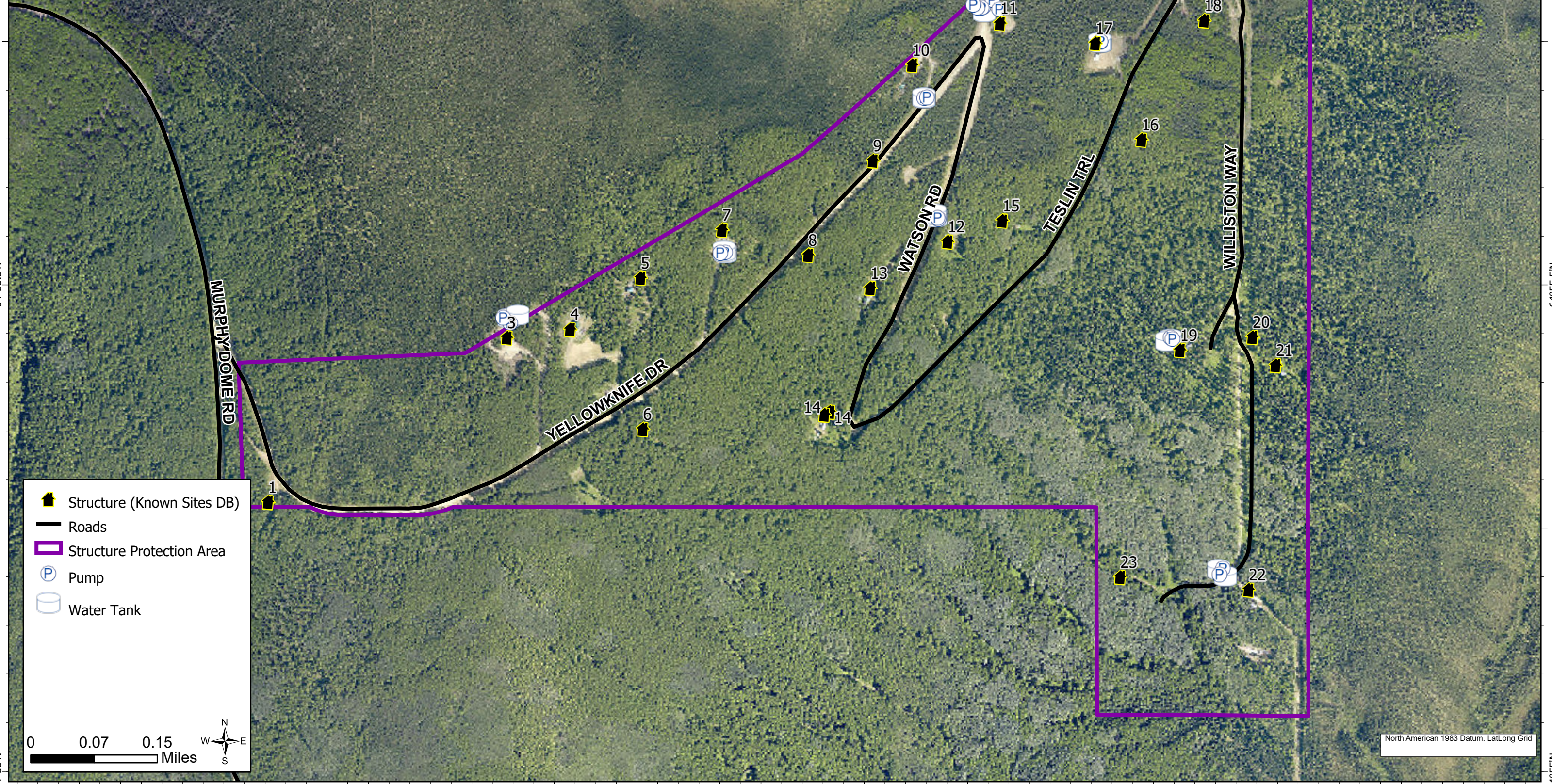
148°11.5'W

148°11'W

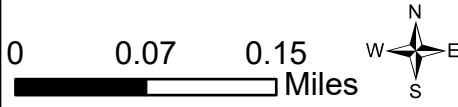
Structure Protection



Murphy Subd
AK-FAS-911319
7/9/2019



- Structure (Known Sites DB)
- Roads
- Structure Protection Area
- Pump
- Water Tank



North American 1983 Datum, Lat/Long Grid

64°55.5'N

64°55.5'N

64°55'N

64°55'N

148°14'W

148°13.5'W

148°13'W

148°12.5'W

148°12'W

148°11.5'W

148°11'W

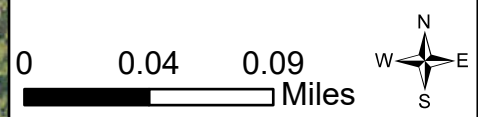
Structure Protection



Perfect Perch Subd
AK-FAS-911319
7/9/2019



- Structure (Known Sites DB)
- Roads
- Structure Protection Area
- Pump
- Water Tank
- Drop Point

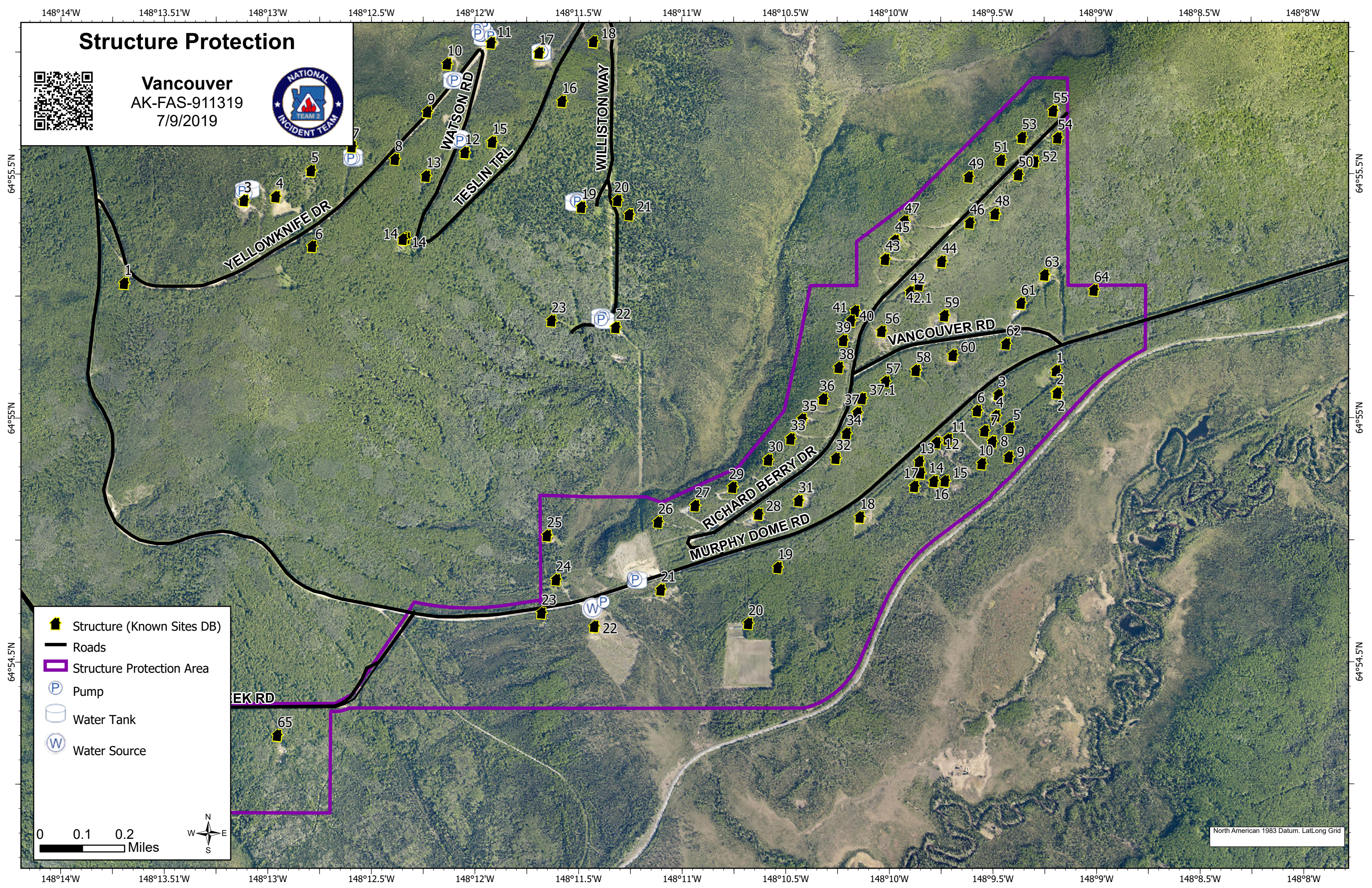


North American 1983 Datum, Lat/Long Grid

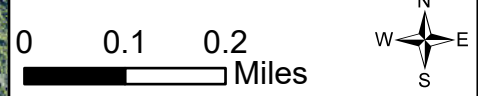
Structure Protection



Vancouver
AK-FAS-911319
7/9/2019



- Structure (Known Sites DB)
- Roads
- Structure Protection Area
- Pump
- Water Tank
- Water Source



North American 1983 Datum. Lat/Long Grid