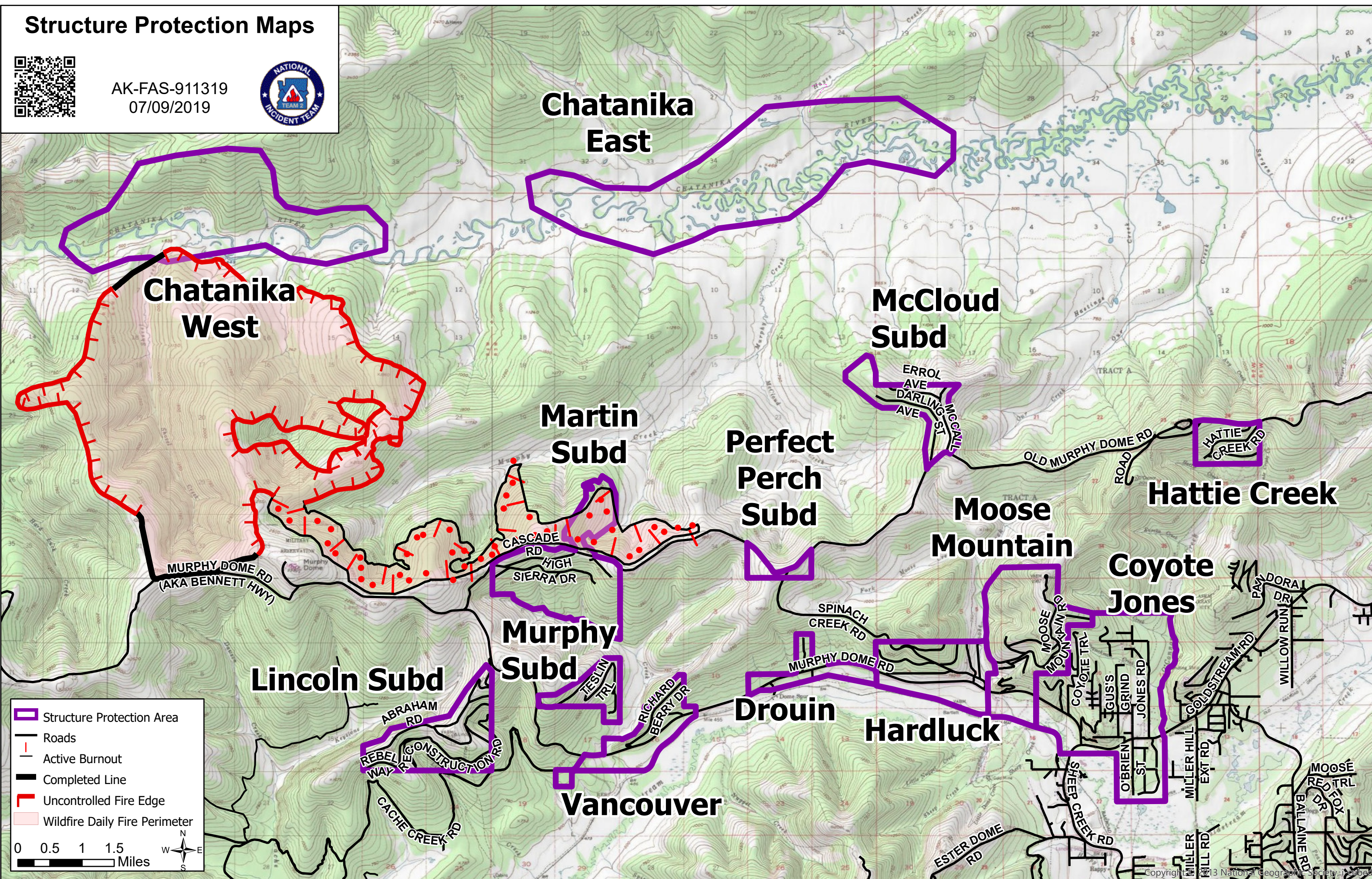


Structure Protection Maps



AK-FAS-911319
07/09/2019



Chatanika East

Chatanika West

McCloud Subd

Martin Subd

Perfect Perch Subd

Moose Mountain

Hattie Creek

Coyote Jones

Murphy Subd

Drouin

Hardluck

Lincoln Subd

Vancouver

Structure Protection Area

Roads

Active Burnout

Completed Line

Uncontrolled Fire Edge

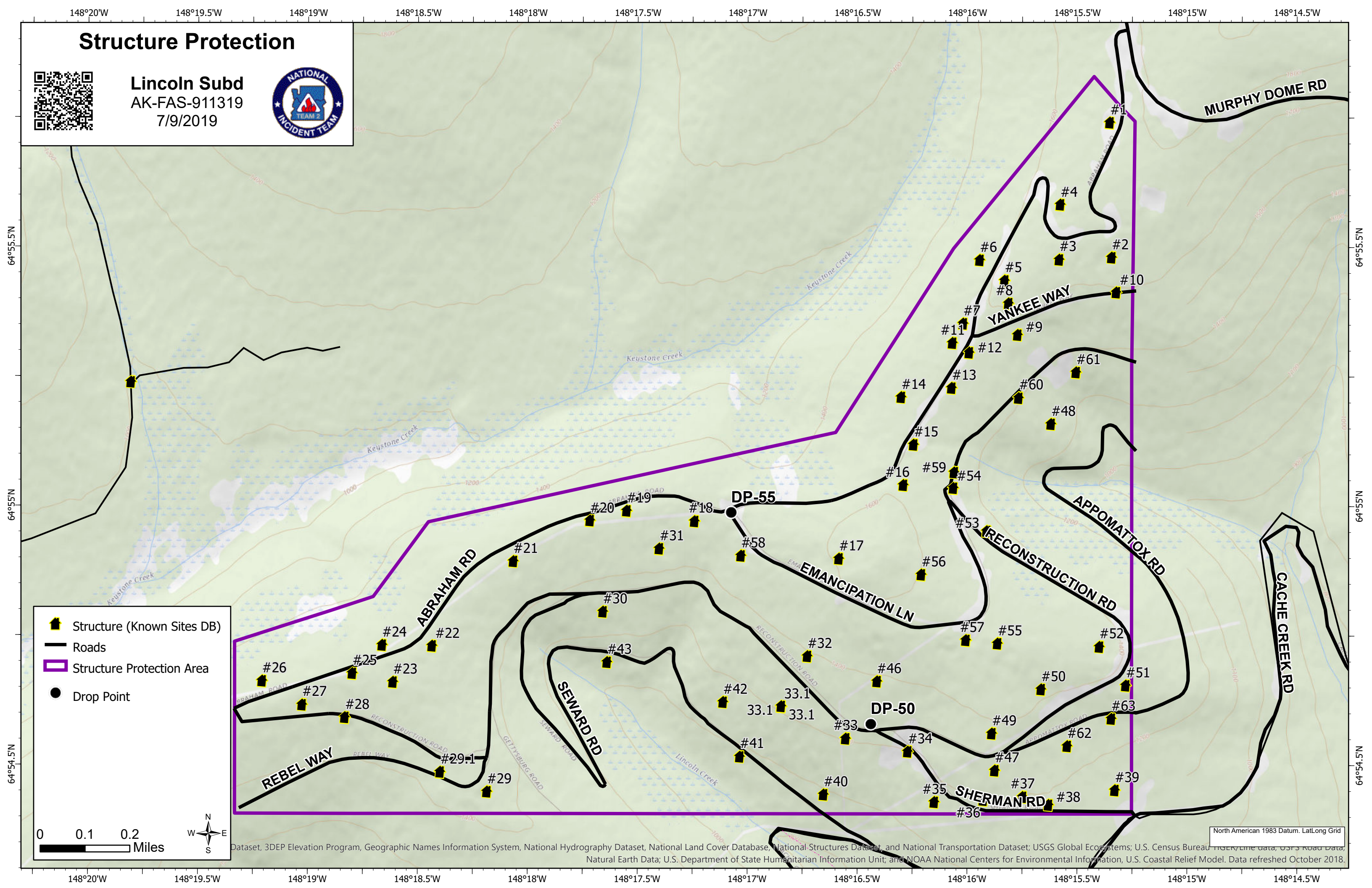
Wildfire Daily Fire Perimeter

0 0.5 1 1.5 Miles

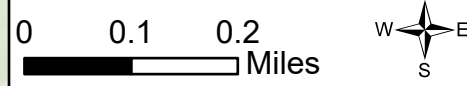
Structure Protection



Lincoln Subd
AK-FAS-911319
7/9/2019



- Structure (Known Sites DB)
- Roads
- Structure Protection Area
- Drop Point

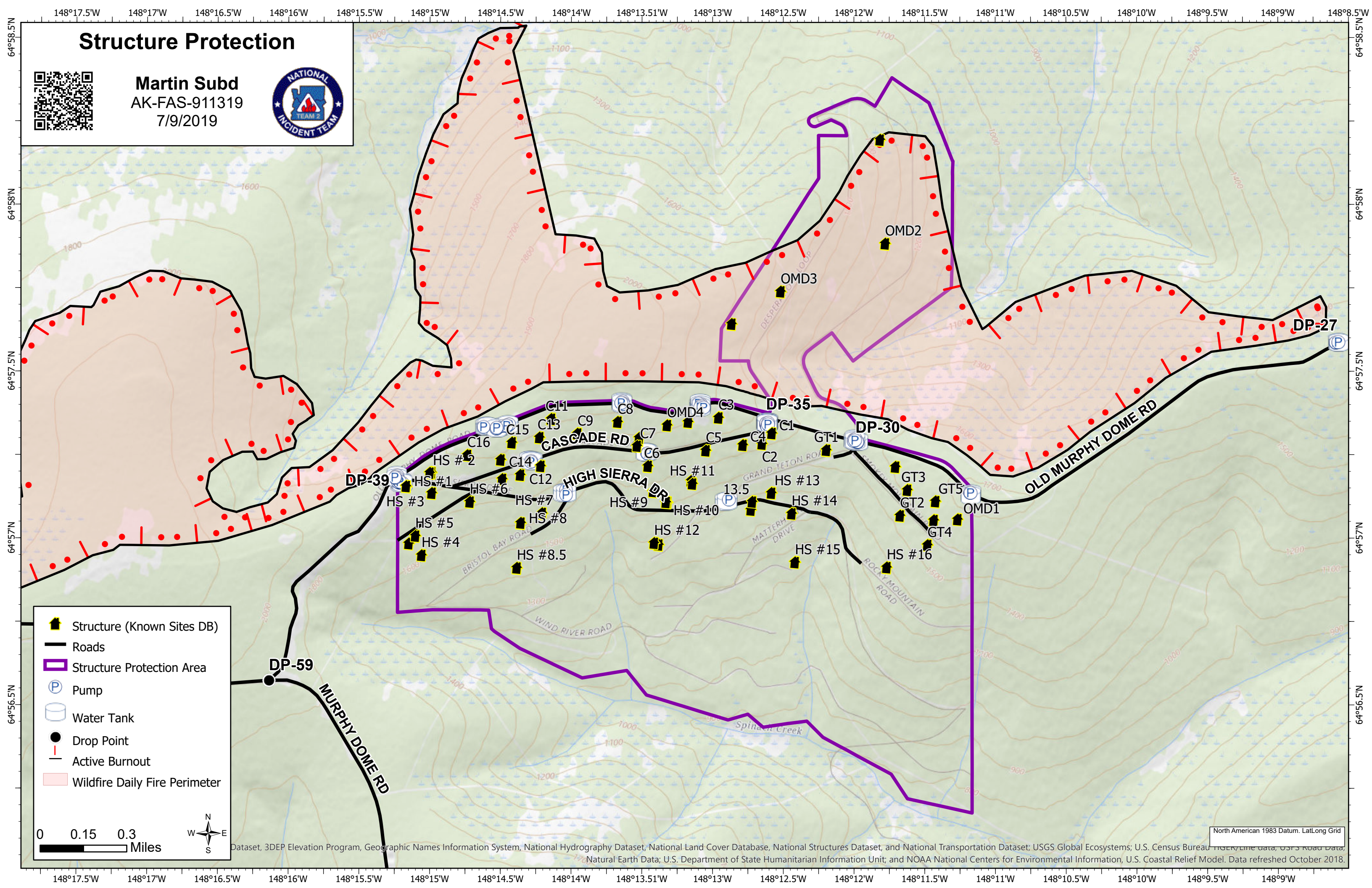


North American 1983 Datum, Lat/Long Grid
Dataset, 3DEP Elevation Program, Geographic Names Information System, National Hydrography Dataset, National Land Cover Database, National Structures Dataset, and National Transportation Dataset; USGS Global Ecosystems; U.S. Census Bureau TIGER/Line data, USFS Road Data, Natural Earth Data; U.S. Department of State Humanitarian Information Unit; and NOAA National Centers for Environmental Information, U.S. Coastal Relief Model. Data refreshed October 2018.

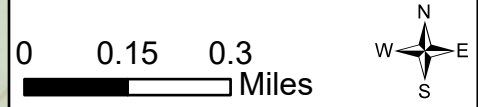
Structure Protection



Martin Subd
AK-FAS-911319
7/9/2019



- Structure (Known Sites DB)
- Roads
- Structure Protection Area
- Pump
- Water Tank
- Drop Point
- Active Burnout
- Wildfire Daily Fire Perimeter



North American 1983 Datum, Lat/Long Grid
Dataset, 3DEP Elevation Program, Geographic Names Information System, National Hydrography Dataset, National Land Cover Database, National Structures Dataset, and National Transportation Dataset; USGS Global Ecosystems; U.S. Census Bureau TIGER/Line data, USFS Road Data, Natural Earth Data; U.S. Department of State Humanitarian Information Unit; and NOAA National Centers for Environmental Information, U.S. Coastal Relief Model. Data refreshed October 2018.

Structure Protection



McCloud Subd
AK-FAS-911319
7/9/2019



DP-05

38

37

35

32

29

36

34

ERROL AVE

31

30

28

17

16

13

12

PAUL RD

8

27

15

14

11

10

DARLING AVE

7

6

25

P

P

9

P

P

P

5

24

26

4

3

23

2

1

22

21

P

P

18

20

19

18

24

23

22

21

20

19

18

24

23

22

21

20

19

18

24

23

22

21

20

19

18

24

23

22

21

20

19

18

24

23

22

21

MCCALL ST

DP-20

DP-10

OLD MURPHY DOME RD

Structure (Known Sites DB)

Roads

Structure Protection Area

Pump

Water Tank

Drop Point

Water Source

0 0.1 0.2 Miles

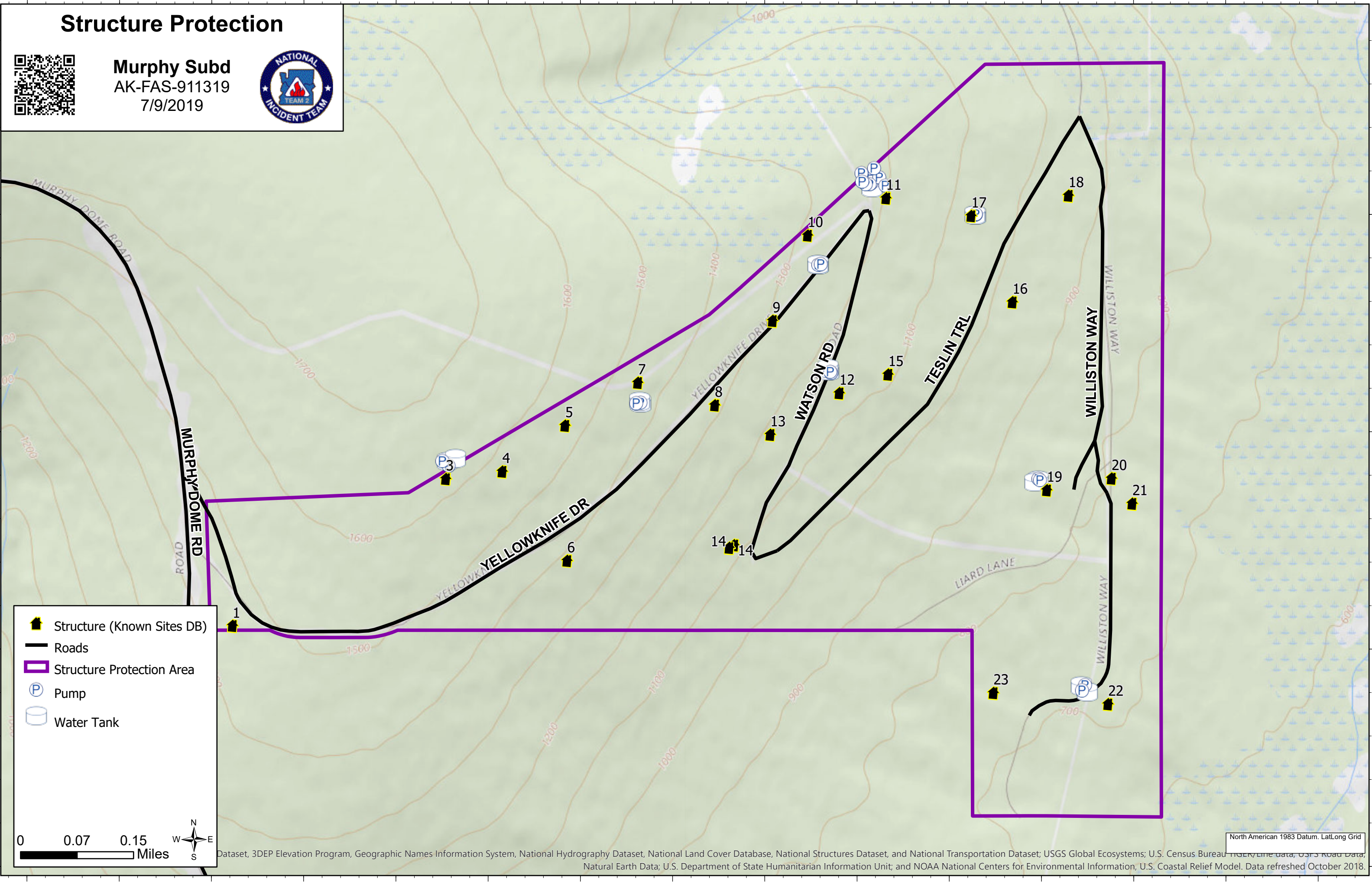


North American 1983 Datum, Lat/Long Grid
Dataset, 3DEP Elevation Program, Geographic Names Information System, National Hydrography Dataset, National Land Cover Database, National Structures Dataset, and National Transportation Dataset; USGS Global Ecosystems; U.S. Census Bureau TIGER/Line data, USFS Road Data, Natural Earth Data; U.S. Department of State Humanitarian Information Unit; and NOAA National Centers for Environmental Information, U.S. Coastal Relief Model. Data refreshed October 2018.

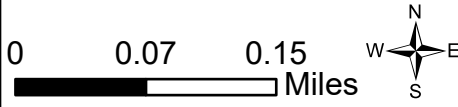
Structure Protection



Murphy Subd
AK-FAS-911319
7/9/2019



- Structure (Known Sites DB)
- Roads
- Structure Protection Area
- Pump
- Water Tank

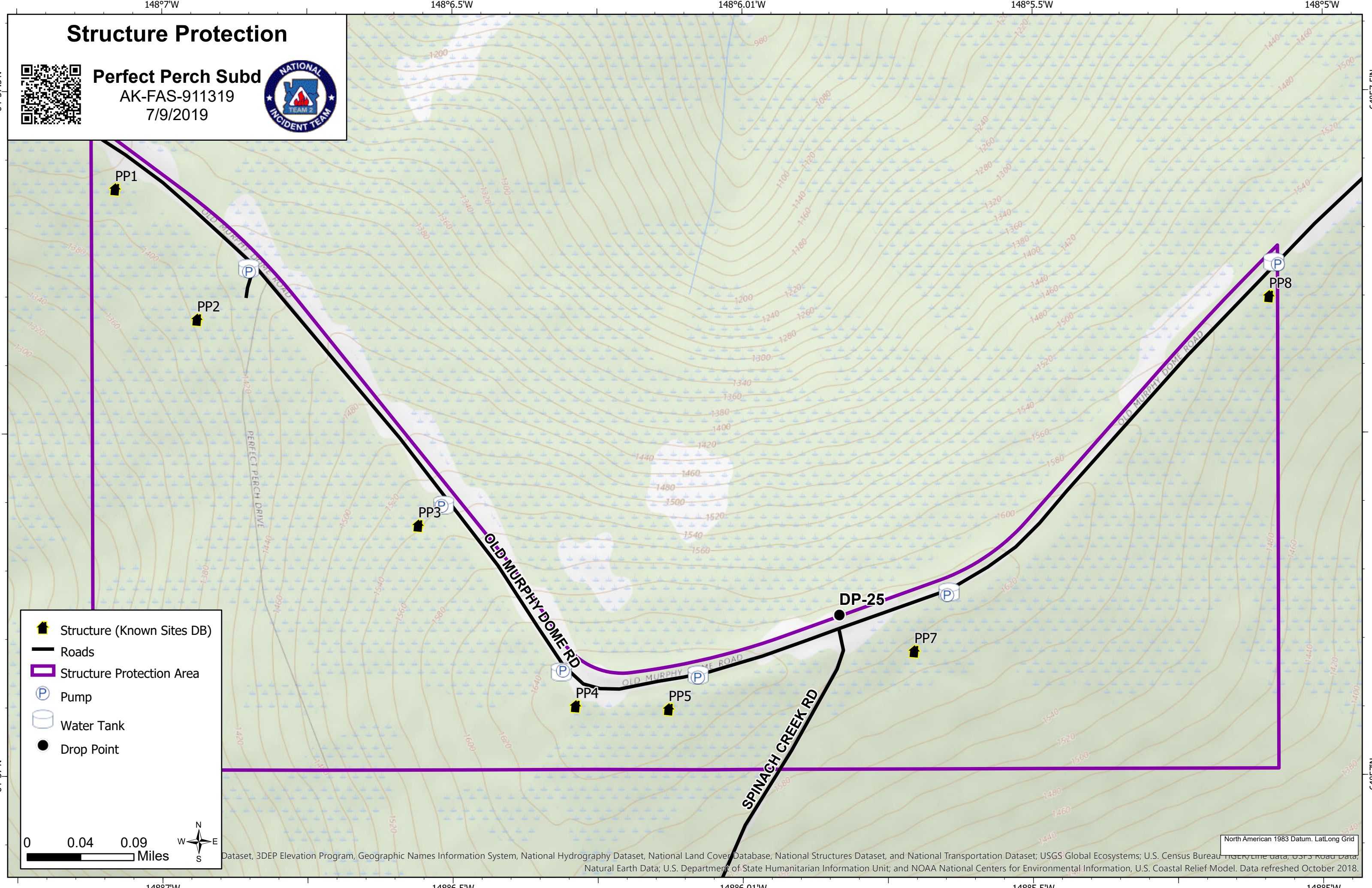


North American 1983 Datum, Lat/Long Grid
Dataset, 3DEP Elevation Program, Geographic Names Information System, National Hydrography Dataset, National Land Cover Database, National Structures Dataset, and National Transportation Dataset; USGS Global Ecosystems; U.S. Census Bureau TIGER/Line data, USFS Road Data, Natural Earth Data; U.S. Department of State Humanitarian Information Unit; and NOAA National Centers for Environmental Information, U.S. Coastal Relief Model. Data refreshed October 2018.

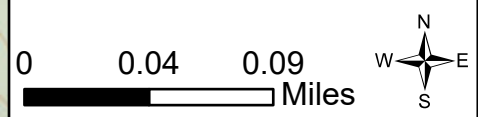
Structure Protection



Perfect Perch Subd
AK-FAS-911319
7/9/2019



- Structure (Known Sites DB)
- Roads
- Structure Protection Area
- Pump
- Water Tank
- Drop Point

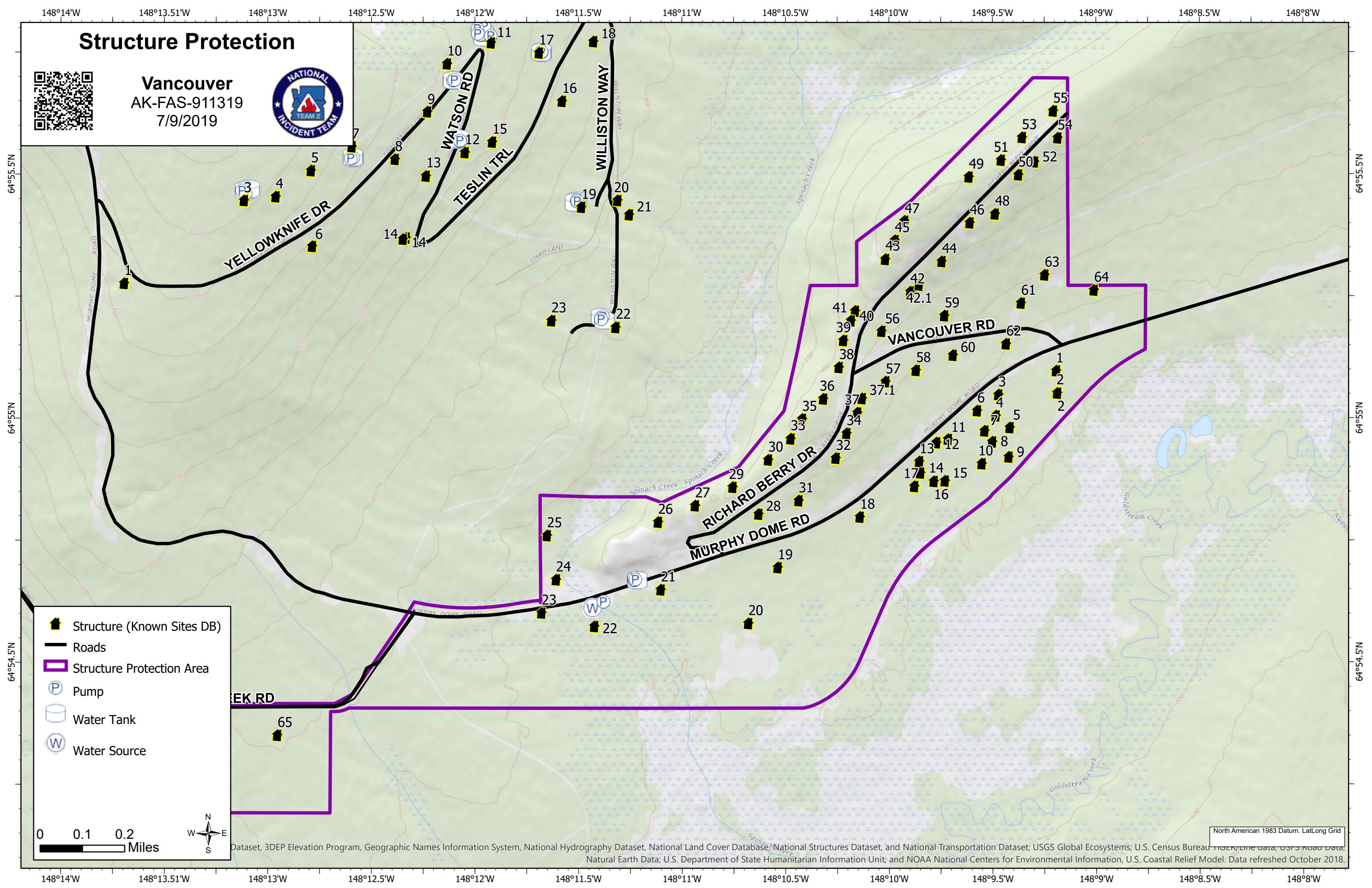


North American 1983 Datum. Lat/Long Grid
Dataset, 3DEP Elevation Program, Geographic Names Information System, National Hydrography Dataset, National Land Cover Database, National Structures Dataset, and National Transportation Dataset; USGS Global Ecosystems; U.S. Census Bureau TIGER/Line data; USFS Road Data; Natural Earth Data; U.S. Department of State Humanitarian Information Unit; and NOAA National Centers for Environmental Information, U.S. Coastal Relief Model. Data refreshed October 2018.

Structure Protection



Vancouver
AK-FAS-911319
7/9/2019



- Structure (Known Sites DB)
- Roads
- Structure Protection Area
- Pump
- Water Tank
- Water Source

0 0.1 0.2 Miles



North American 1983 Datum, Lat/Long Grid
Dataset, 3DEP Elevation Program, Geographic Names Information System, National Hydrography Dataset, National Land Cover Database, National Structures Dataset, and National Transportation Dataset; USGS Global Ecosystems; U.S. Census Bureau TIGER/Line data, USFS Road Data, Natural Earth Data; U.S. Department of State Humanitarian Information Unit; and NOAA National Centers for Environmental Information, U.S. Coastal Relief Model. Data refreshed October 2018.