

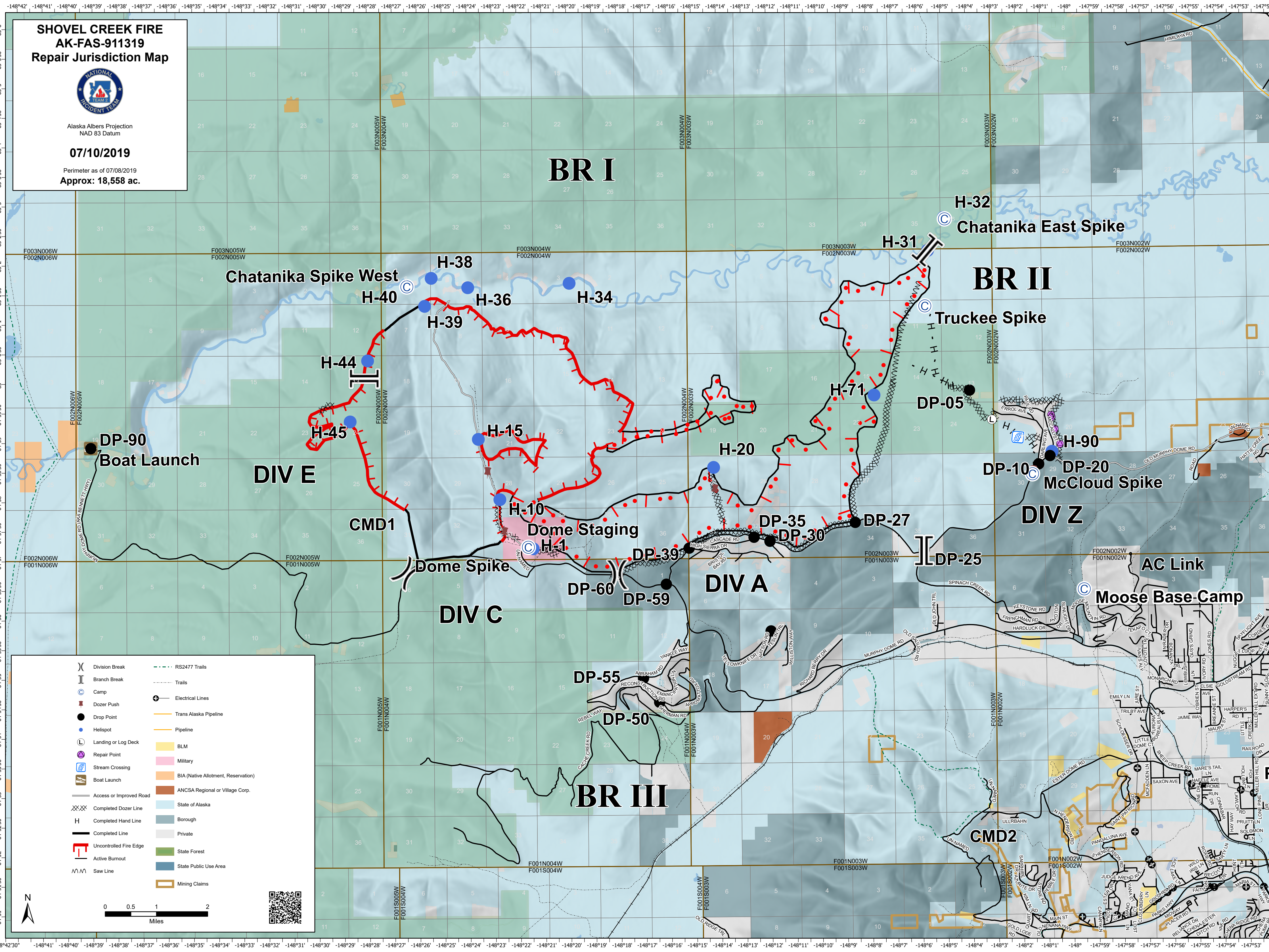
**SHOVEL CREEK FIRE  
AK-FAS-911319  
Repair Jurisdiction Map**



Alaska Albers Projection  
NAD 83 Datum

**07/10/2019**

Perimeter as of 07/08/2019  
Approx: 18,558 ac.



	Division Break		RS2477 Trails
	Branch Break		Trails
	Camp		Electrical Lines
	Dozer Push		Trans Alaska Pipeline
	Drop Point		Pipeline
	Helispot		BLM
	Landing or Log Deck		Military
	Repair Point		BIA (Native Allotment, Reservation)
	Stream Crossing		ANCSA Regional or Village Corp.
	Boat Launch		State of Alaska
	Access or Improved Road		Borough
	Completed Dozer Line		Private
	Completed Hand Line		State Forest
	Completed Line		State Public Use Area
	Uncontrolled Fire Edge		Mining Claims
	Active Burnout		
	Saw Line		

