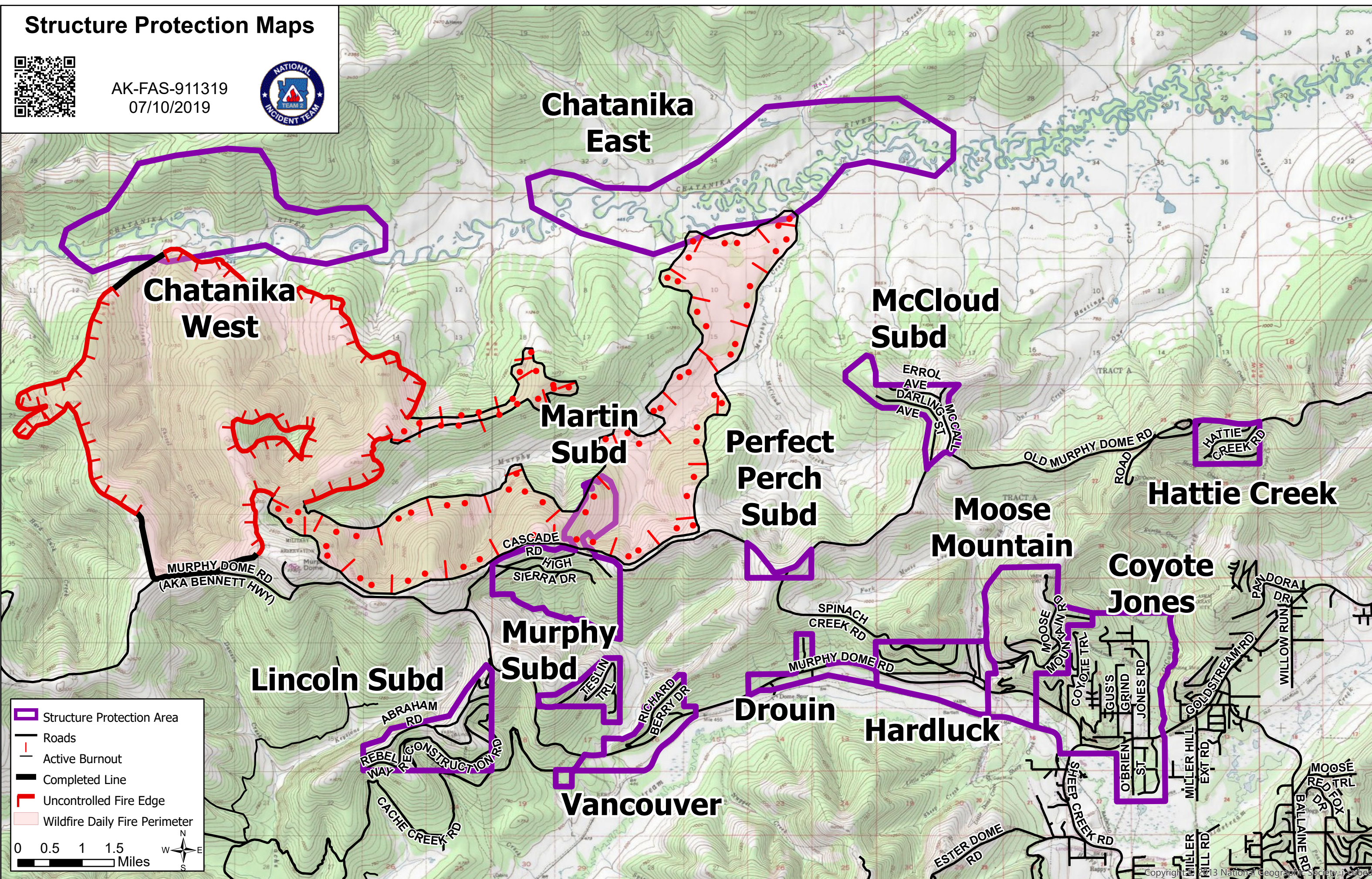


# Structure Protection Maps



AK-FAS-911319  
07/10/2019



Structure Protection Area

Roads

Active Burnout

Completed Line

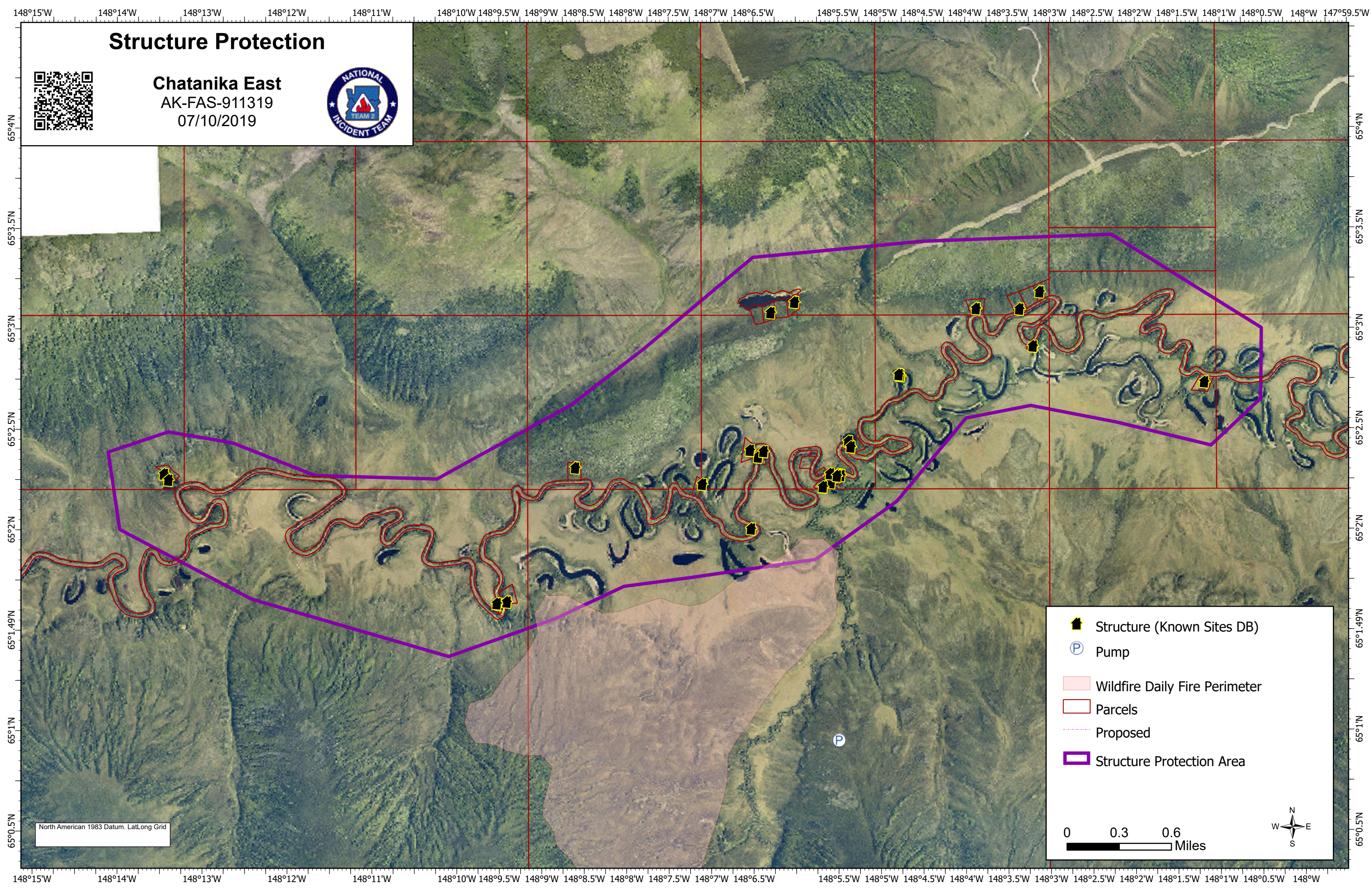
Uncontrolled Fire Edge

Wildfire Daily Fire Perimeter

0 0.5 1 1.5 Miles

# Structure Protection

**Chatanika East**  
AK-FAS-911319  
07/10/2019



- Structure (Known Sites DB)
- Pump
- Wildfire Daily Fire Perimeter
- Parcels
- Proposed
- Structure Protection Area

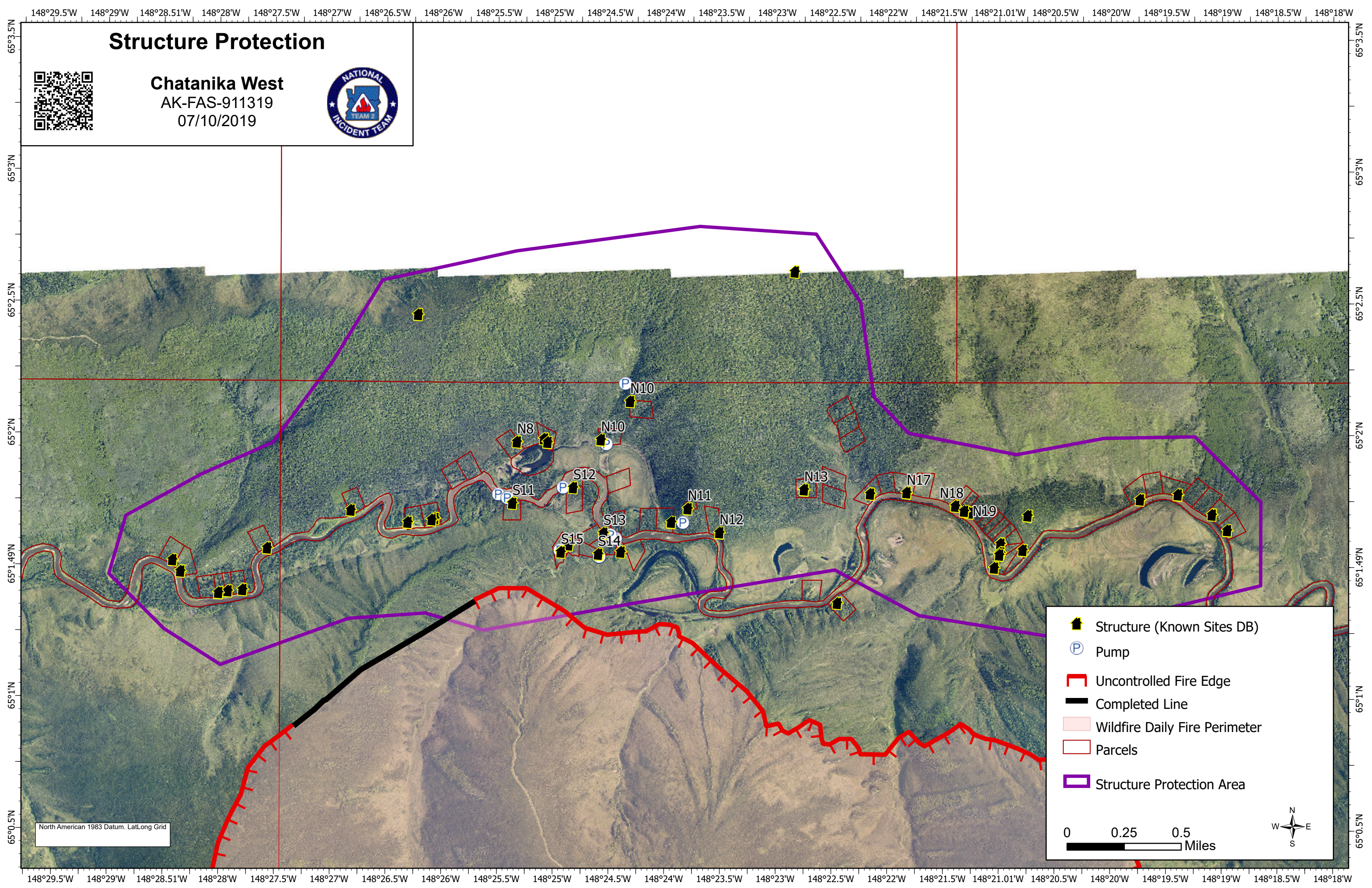
0 0.3 0.6 Miles

A north arrow pointing upwards, with 'N' at the top, 'S' at the bottom, 'E' on the right, and 'W' on the left.

North American 1983 Datum. LatLong Grid

# Structure Protection

Chatanika West  
AK-FAS-911319  
07/10/2019



- Structure (Known Sites DB)
- Pump
- Uncontrolled Fire Edge
- Completed Line
- Wildfire Daily Fire Perimeter
- Parcels
- Structure Protection Area

0 0.25 0.5 Miles

North American 1983 Datum. LatLong Grid