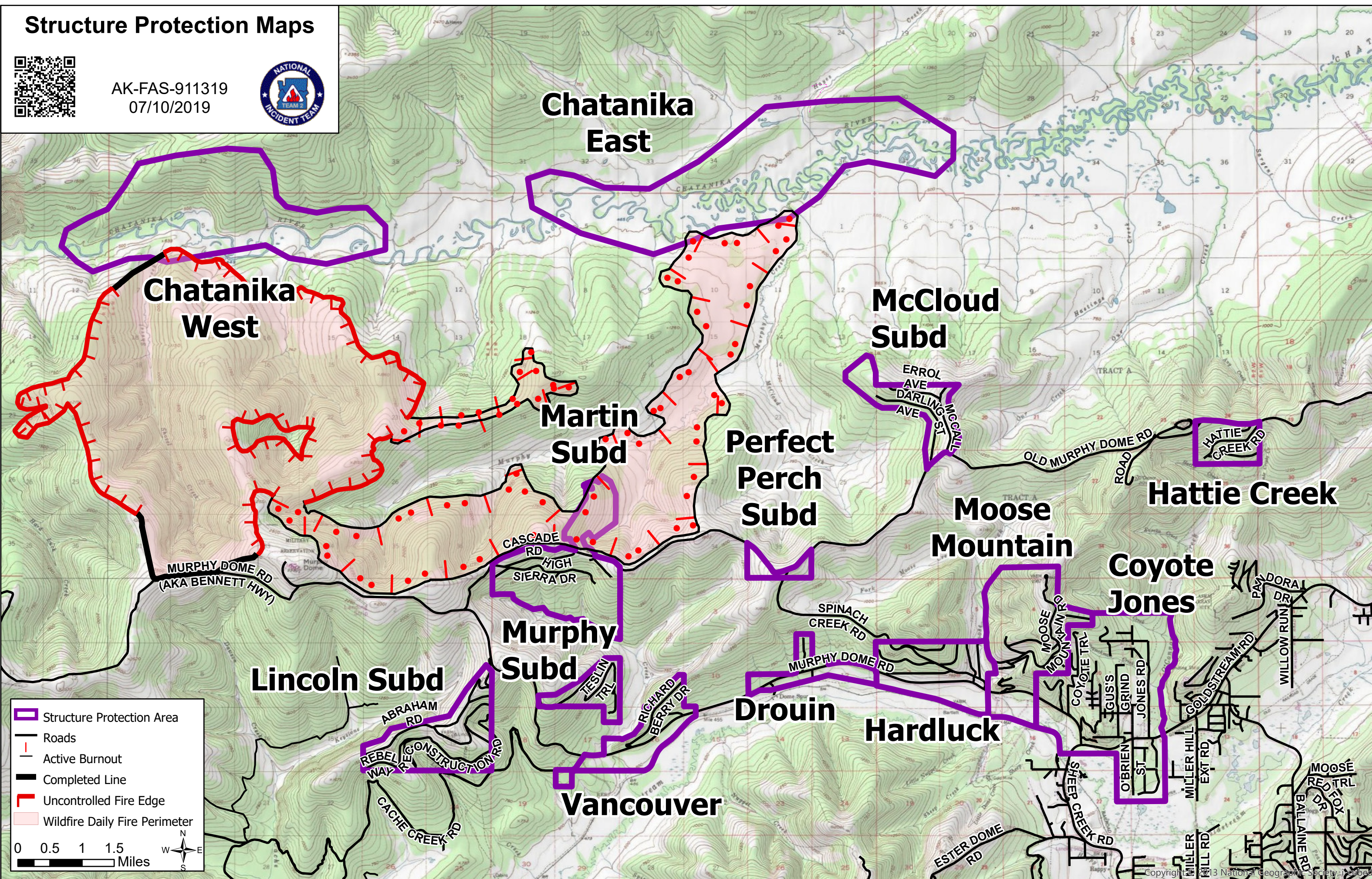


# Structure Protection Maps



AK-FAS-911319  
07/10/2019



**Legend**

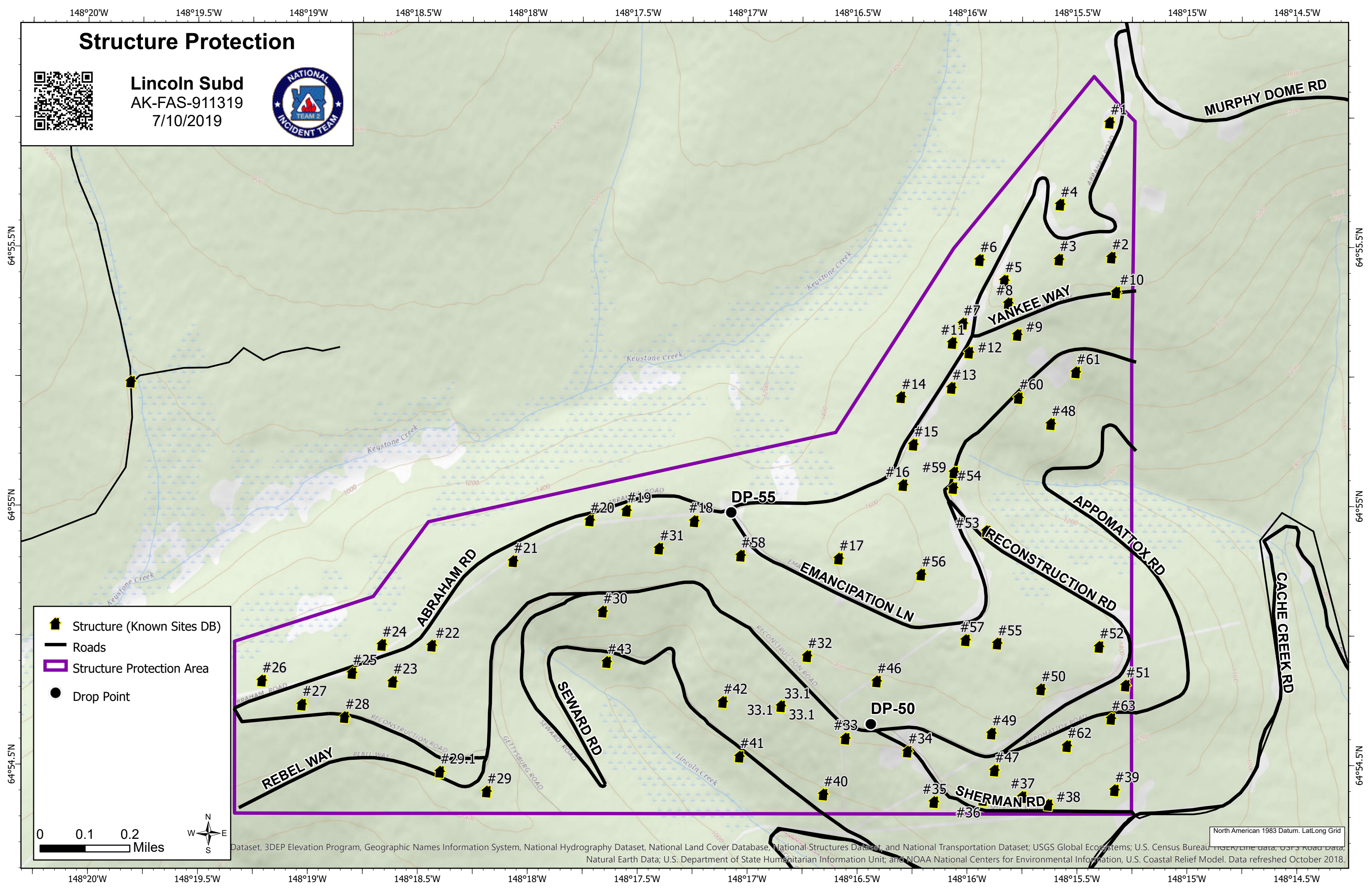
- Structure Protection Area
- Roads
- Active Burnout
- Completed Line
- Uncontrolled Fire Edge
- Wildfire Daily Fire Perimeter

0 0.5 1 1.5 Miles

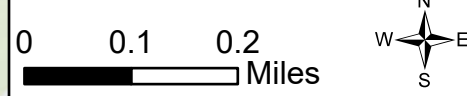
# Structure Protection



Lincoln Subd  
AK-FAS-911319  
7/10/2019



- Structure (Known Sites DB)
- Roads
- Structure Protection Area
- Drop Point



North American 1983 Datum, Lat/Long Grid  
Dataset, 3DEP Elevation Program, Geographic Names Information System, National Hydrography Dataset, National Land Cover Database, National Structures Dataset, and National Transportation Dataset; USGS Global Ecosystems; U.S. Census Bureau TIGER/Line data, USFS Road Data, Natural Earth Data; U.S. Department of State Humanitarian Information Unit; and NOAA National Centers for Environmental Information, U.S. Coastal Relief Model. Data refreshed October 2018.

# Structure Protection



Martin Subd  
AK-FAS-911319  
7/10/2019



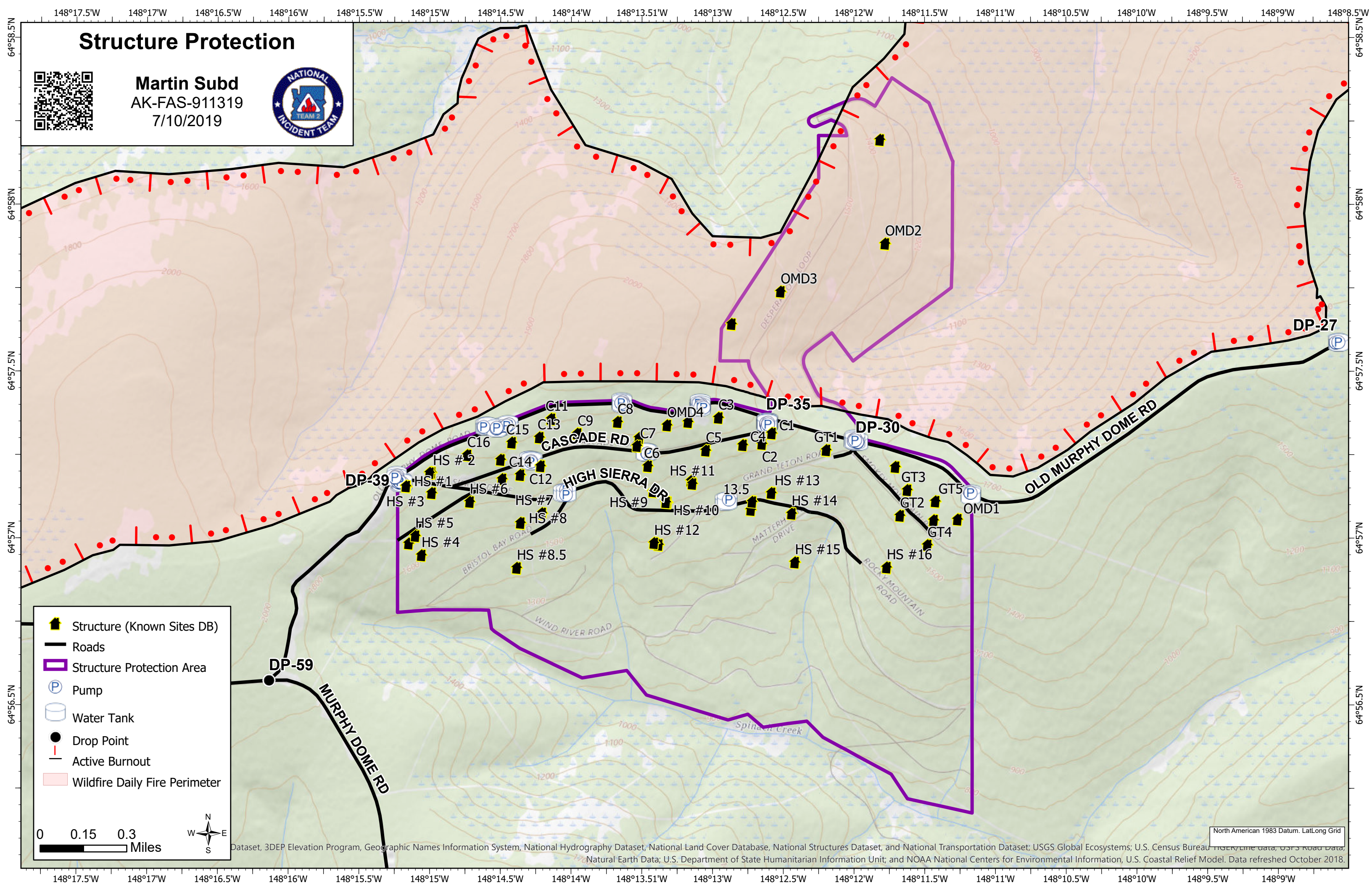
- Structure (Known Sites DB)
- Roads
- Structure Protection Area
- Pump
- Water Tank
- Drop Point
- Active Burnout
- Wildfire Daily Fire Perimeter

0 0.15 0.3 Miles



Dataset, 3DEP Elevation Program, Geographic Names Information System, National Hydrography Dataset, National Land Cover Database, National Structures Dataset, and National Transportation Dataset; USGS Global Ecosystems; U.S. Census Bureau TIGER/Line data, USFS Road Data, Natural Earth Data; U.S. Department of State Humanitarian Information Unit; and NOAA National Centers for Environmental Information, U.S. Coastal Relief Model. Data refreshed October 2018.

North American 1983 Datum, Lat/Long Grid



# Structure Protection



**McCloud Subd**  
AK-FAS-911319  
7/10/2019



DP-05

38

37

35

32

36

34

ERROL AVE

29

17

16

13

12

PAUL RD

31

30

28

15

14

11

10

DARLING AVE

8

27

26

9

7

6

5

MCCALL ST

25

24

23

4

3

2

1

20

19

18

22

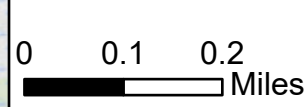
21

DP-20

DP-10

OLD MURPHY DOME RD

- Structure (Known Sites DB)
- Roads
- Structure Protection Area
- Pump
- Water Tank
- Drop Point
- Water Source



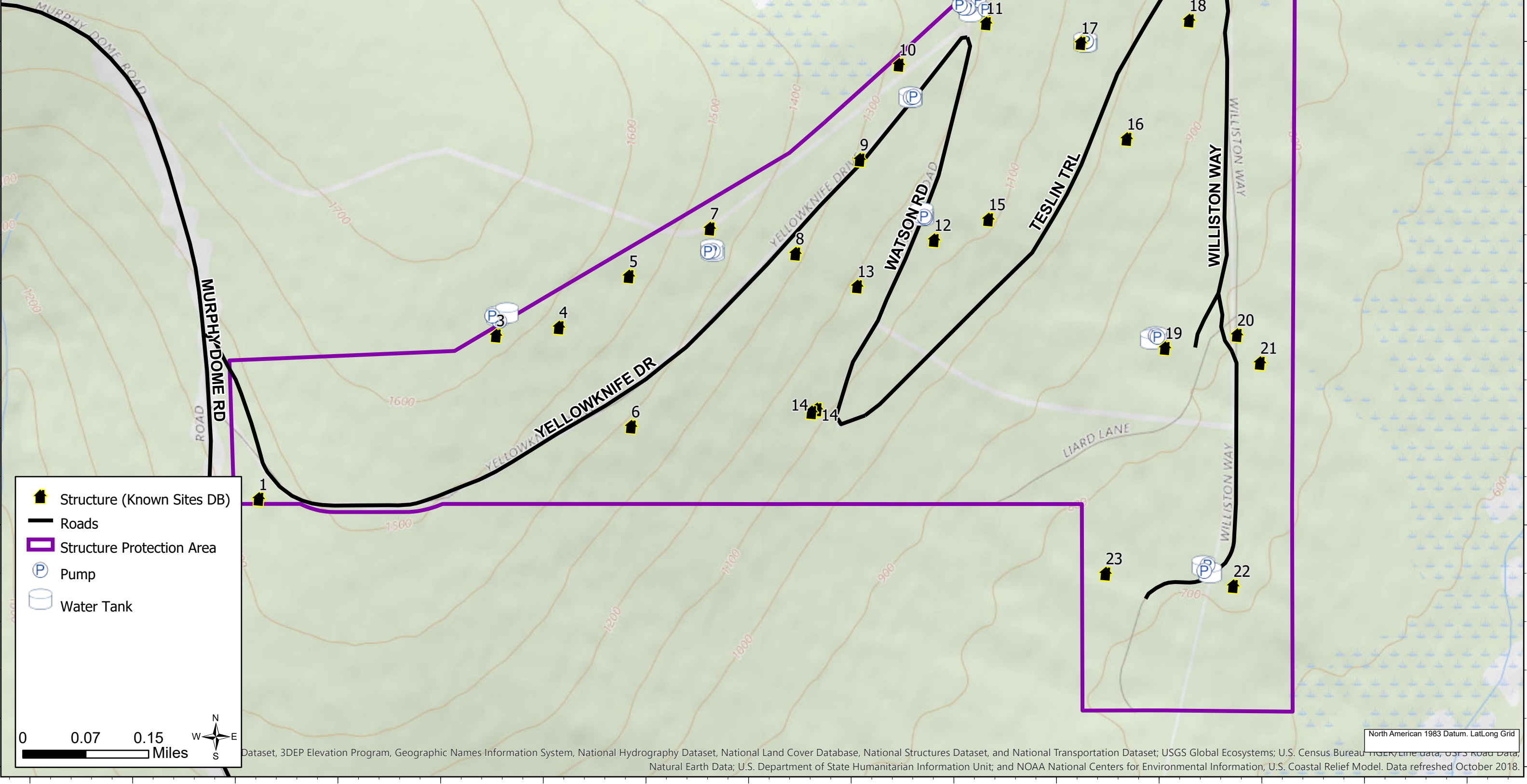
Dataset, 3DEP Elevation Program, Geographic Names Information System, National Hydrography Dataset, National Land Cover Database, National Structures Dataset, and National Transportation Dataset; USGS Global Ecosystems; U.S. Census Bureau TIGER/Line data, USFS Road Data, Natural Earth Data; U.S. Department of State Humanitarian Information Unit; and NOAA National Centers for Environmental Information, U.S. Coastal Relief Model. Data refreshed October 2018.

North American 1983 Datum, Lat/Long Grid

# Structure Protection



Murphy Subd  
AK-FAS-911319  
7/10/2019



North American 1983 Datum, Lat/Long Grid  
Dataset, 3DEP Elevation Program, Geographic Names Information System, National Hydrography Dataset, National Land Cover Database, National Structures Dataset, and National Transportation Dataset; USGS Global Ecosystems; U.S. Census Bureau TIGER/Line data, USFS Road Data, Natural Earth Data; U.S. Department of State Humanitarian Information Unit; and NOAA National Centers for Environmental Information, U.S. Coastal Relief Model. Data refreshed October 2018.

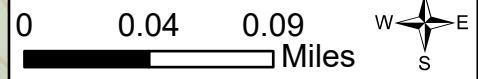
# Structure Protection



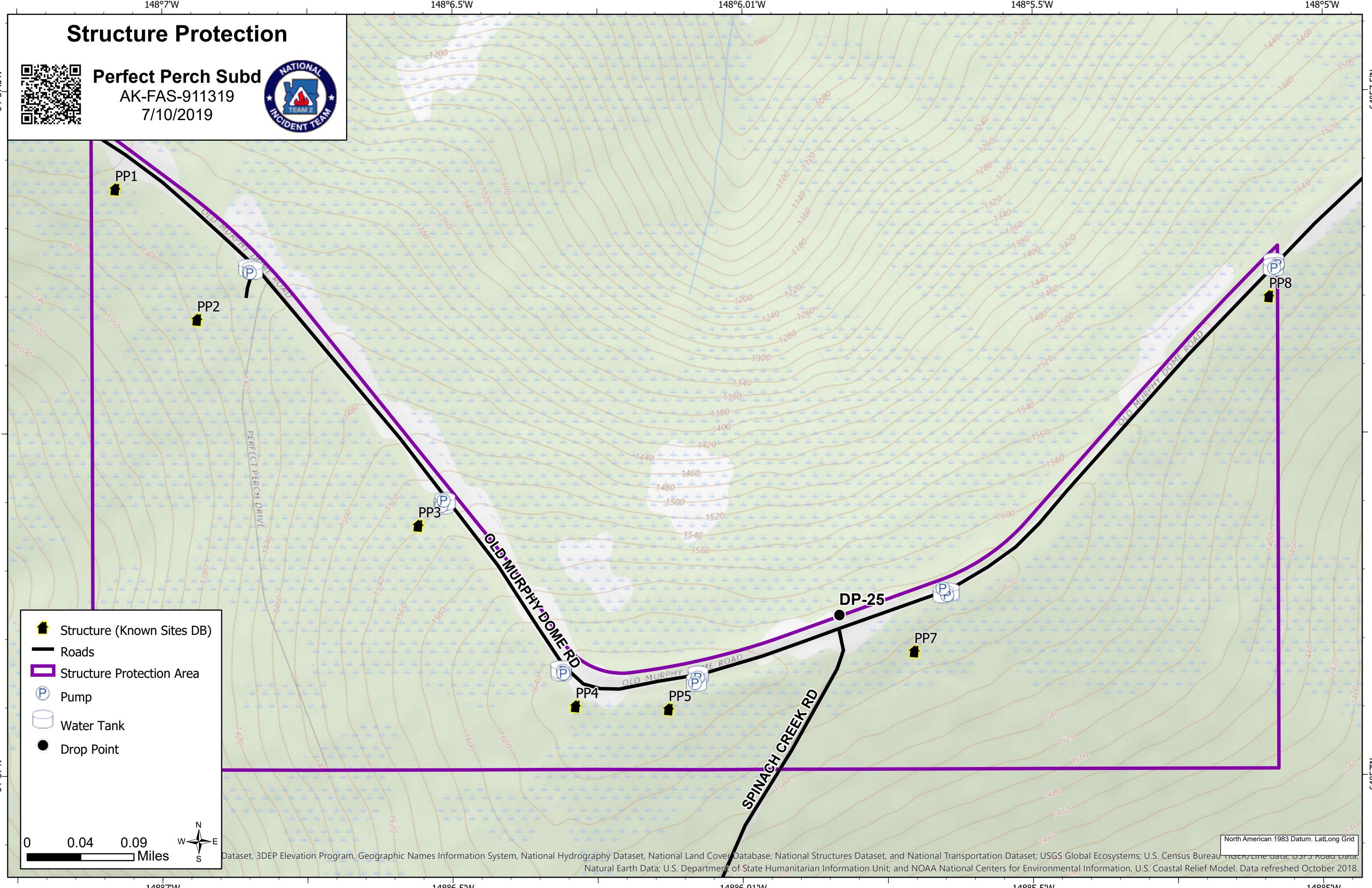
**Perfect Perch Subd**  
AK-FAS-911319  
7/10/2019



- Structure (Known Sites DB)
- Roads
- Structure Protection Area
- Pump
- Water Tank
- Drop Point



Dataset, 3DEP Elevation Program, Geographic Names Information System, National Hydrography Dataset, National Land Cover Database, National Structures Dataset, and National Transportation Dataset; USGS Global Ecosystems; U.S. Census Bureau TIGER/Line data; USFS Road Data; Natural Earth Data; U.S. Department of State Humanitarian Information Unit; and NOAA National Centers for Environmental Information, U.S. Coastal Relief Model. Data refreshed October 2018.



# Structure Protection



Vancouver  
AK-FAS-911319  
7/10/2019

