

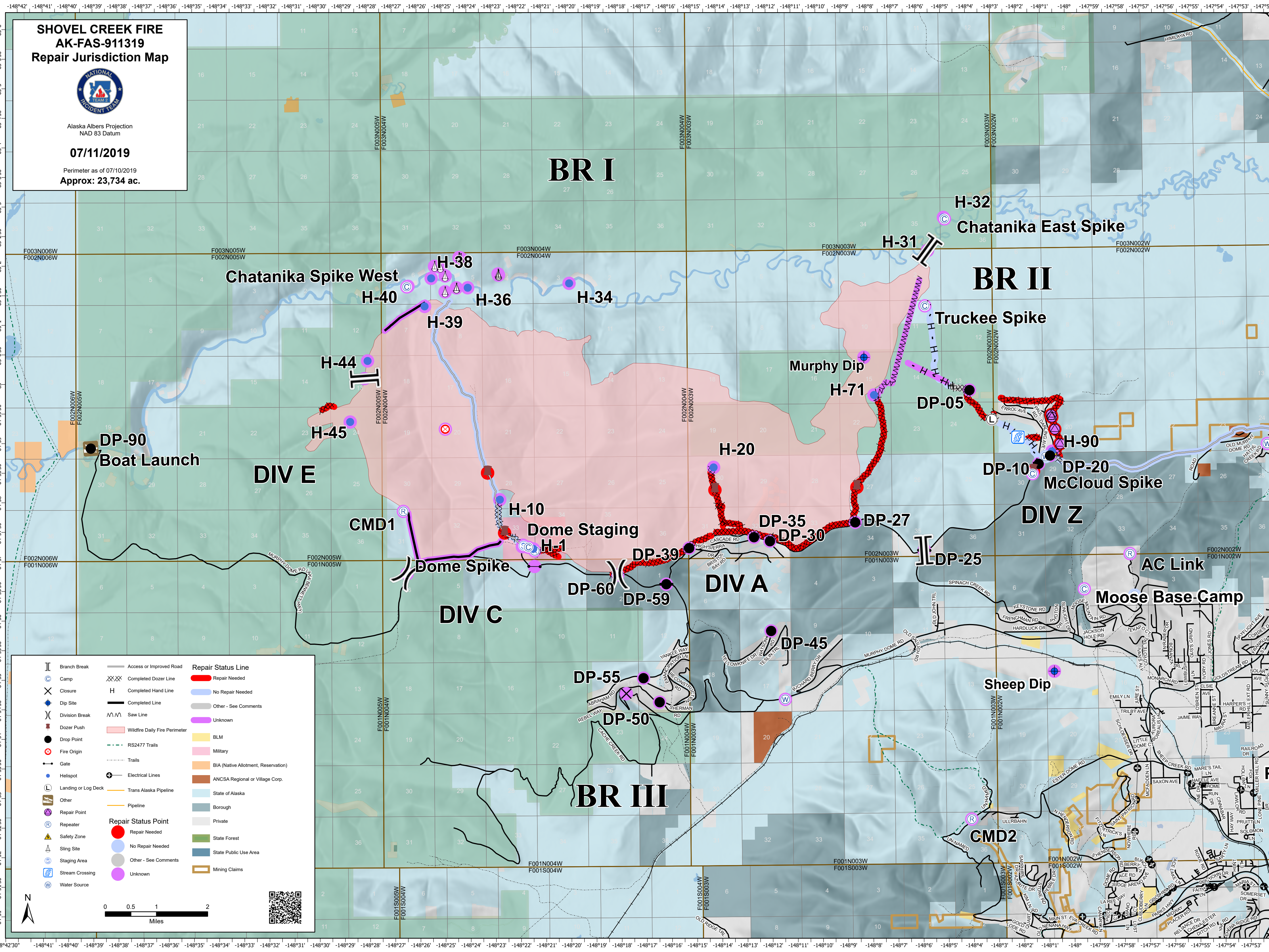
**SHOVEL CREEK FIRE
AK-FAS-911319
Repair Jurisdiction Map**



Alaska Albers Projection
NAD 83 Datum

07/11/2019

Perimeter as of 07/10/2019
Approx: 23,734 ac.



<ul style="list-style-type: none"> Branch Break ⊙ Camp ✕ Closure ⊕ Dip Site ⌋ Division Break ▬ Dozer Push ● Drop Point ⊗ Fire Origin ⬮ Gate ⊕ Helispot Ⓛ Landing or Log Deck Ⓜ Other Ⓡ Repair Point Ⓡ Repeater ⚠ Safety Zone Ⓢ Sling Site Ⓢ Staging Area Ⓢ Stream Crossing Ⓢ Water Source 	<ul style="list-style-type: none"> — Access or Improved Road ⊗ Completed Dozer Line — Completed Hand Line — Completed Line Ⓜ Saw Line — Wildfire Daily Fire Perimeter — RS2477 Trails — Trails — Electrical Lines — Trans Alaska Pipeline — Pipeline 	<p>Repair Status Line</p> <ul style="list-style-type: none"> — Repair Needed — No Repair Needed — Other - See Comments — Unknown <p>Repair Status Point</p> <ul style="list-style-type: none"> ● Repair Needed ● No Repair Needed ● Other - See Comments ● Unknown
---	---	--

BLM
 Military
 ANCSA Regional or Village Corp.
 State of Alaska
 Borough
 Private
 State Forest
 State Public Use Area
 Mining Claims

0 0.5 1 2
 Miles

