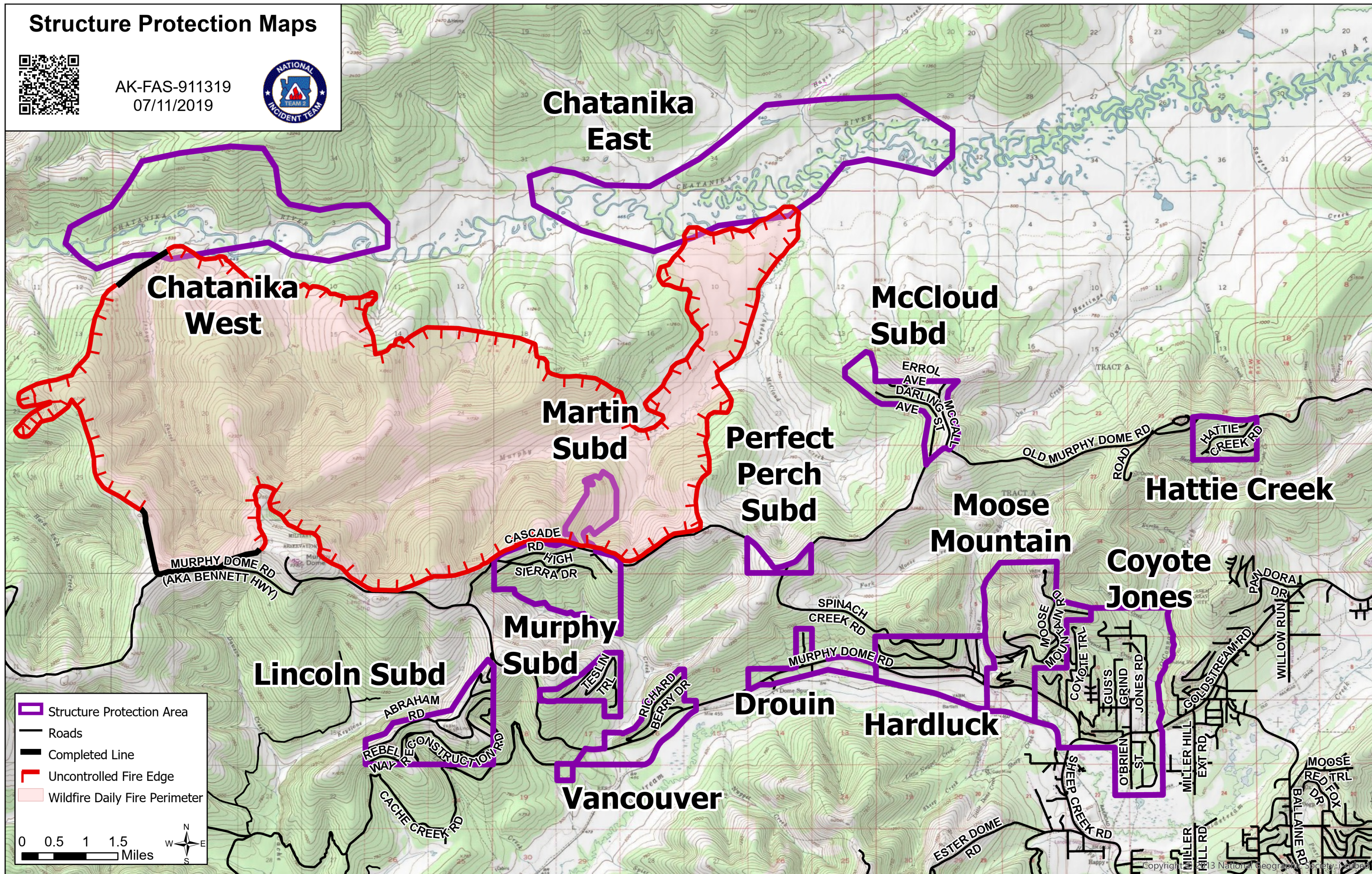


Structure Protection Maps



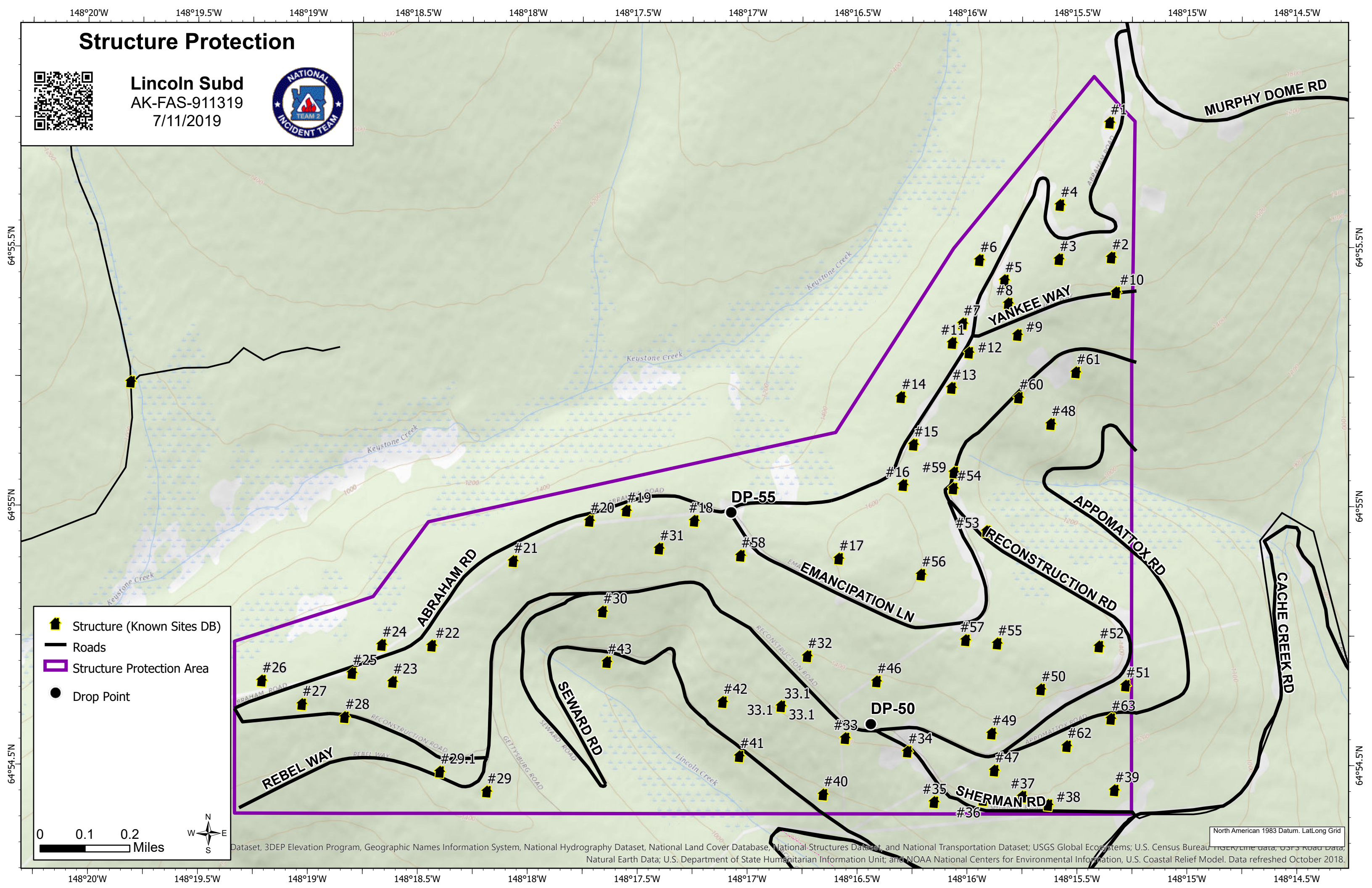
AK-FAS-911319
07/11/2019



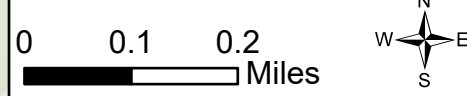
Structure Protection



Lincoln Subd
AK-FAS-911319
7/11/2019



- Structure (Known Sites DB)
- Roads
- Structure Protection Area
- Drop Point

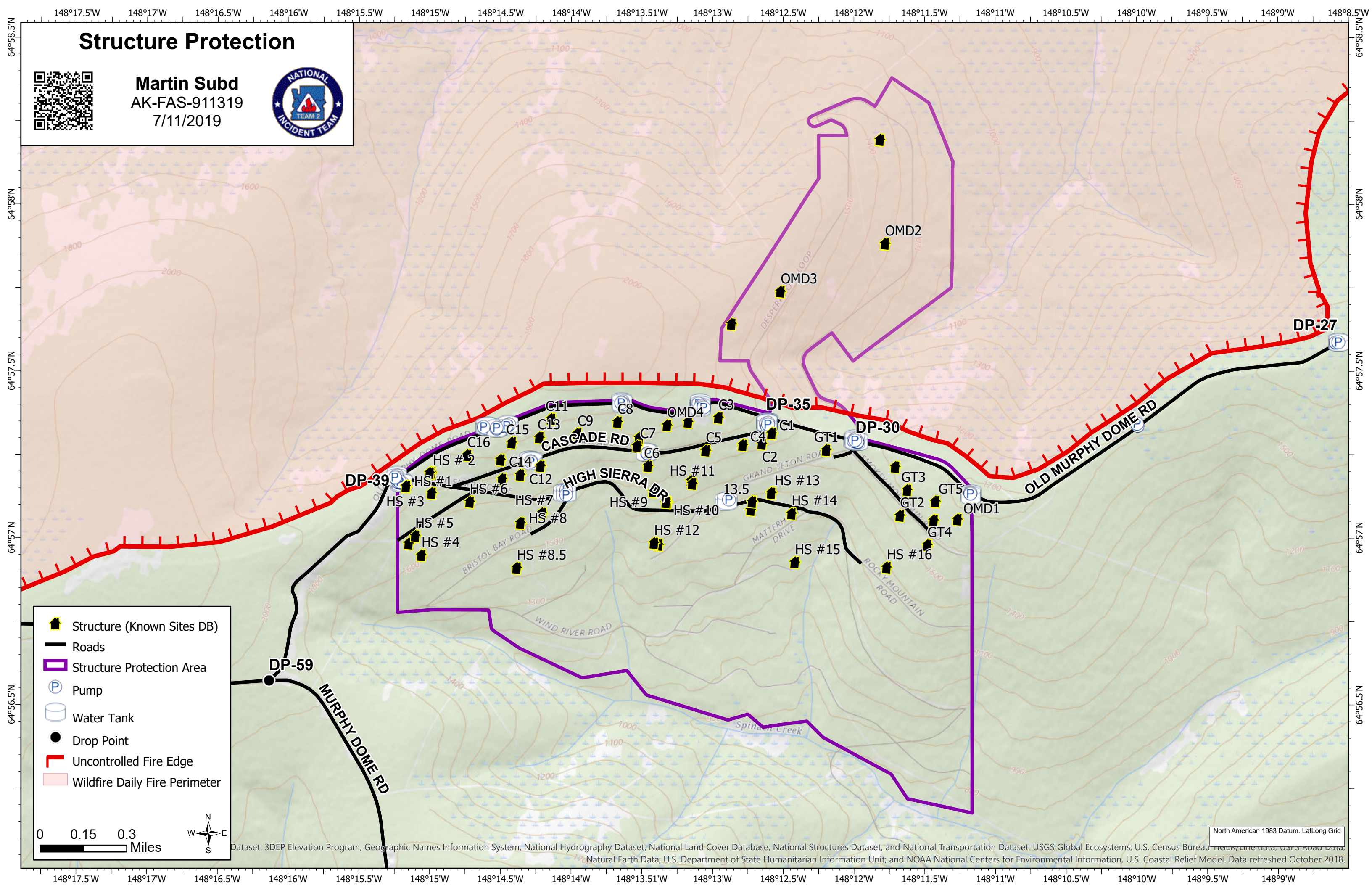


North American 1983 Datum, Lat/Long Grid
Dataset, 3DEP Elevation Program, Geographic Names Information System, National Hydrography Dataset, National Land Cover Database, National Structures Dataset, and National Transportation Dataset; USGS Global Ecosystems; U.S. Census Bureau TIGER/Line data, USFS Road Data, Natural Earth Data; U.S. Department of State Humanitarian Information Unit; and NOAA National Centers for Environmental Information, U.S. Coastal Relief Model. Data refreshed October 2018.

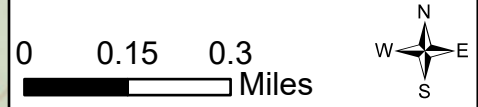
Structure Protection



Martin Subd
AK-FAS-911319
7/11/2019



- Structure (Known Sites DB)
- Roads
- Structure Protection Area
- Pump
- Water Tank
- Drop Point
- Uncontrolled Fire Edge
- Wildfire Daily Fire Perimeter



North American 1983 Datum, Lat/Long Grid
Dataset, 3DEP Elevation Program, Geographic Names Information System, National Hydrography Dataset, National Land Cover Database, National Structures Dataset, and National Transportation Dataset; USGS Global Ecosystems; U.S. Census Bureau TIGER/Line data, USFS Road Data, Natural Earth Data; U.S. Department of State Humanitarian Information Unit; and NOAA National Centers for Environmental Information, U.S. Coastal Relief Model. Data refreshed October 2018.

Structure Protection



McCloud Subd
AK-FAS-911319
7/11/2019



DP-05

38

37

35

32

29

36

34

ERROL AVE

31

8

27

30

28

17

16

13

12

PAUL RD

5

6

DARLING AVE

25

26

15

14

11

10

9

7

4

5

24

23

P

P

PP

PP

P

P

P

P

P

P

P

P

P

P

P

P

P

P

P

P

P

P

P

P

P

P

P

P

P

P

P

P

P

P

20

19

18

22

21

20

19

18

22

21

20

19

18

22

21

20

19

18

22

21

20

19

18

22

21

20

19

18

22

21

20

19

18

22

21

20

19

18

22

21

20

19

18

22

21

20

19

18

22

21

20

19

18

22

21

20

19

18

22

21

20

19

18

22

21

20

19

18

22

21

20

19

18

22

21

20

19

18

22

21

20

19

18

22

21

20

19

18

22

21

20

19

18

22

21

20

19

18

22

21

20

19

18

22

21

20

19

18

22

21

20

19

18

22

21

20

19

18

22

21

20

19

18

22

21

20

19

18

22

21

20

19

18

22

21

20

19

18

22

21

20

19

18

22

21

20

19

18

22

21

20

19

18

22

21

20

19

18

22

21

20

19

18

22

21

20

19

18

22

21

20

19

18

22

21

20

19

18

22

21

20

19

18

22

21

20

19

18

22

21

20

19

18

22

21

20

19

18

22

21

20

19

18

22

21

20

19

18

22

21

20

19

18

22

21

20

19

18

22

21

20

19

18

22

21

20

19

18

22

21

20

19

18

22

21

20

19

18

22

21

20

19

18

22

21

20

19

18

22

21

20

19

18

22

21

20

19

18

22

21

20

19

18

22

21

20

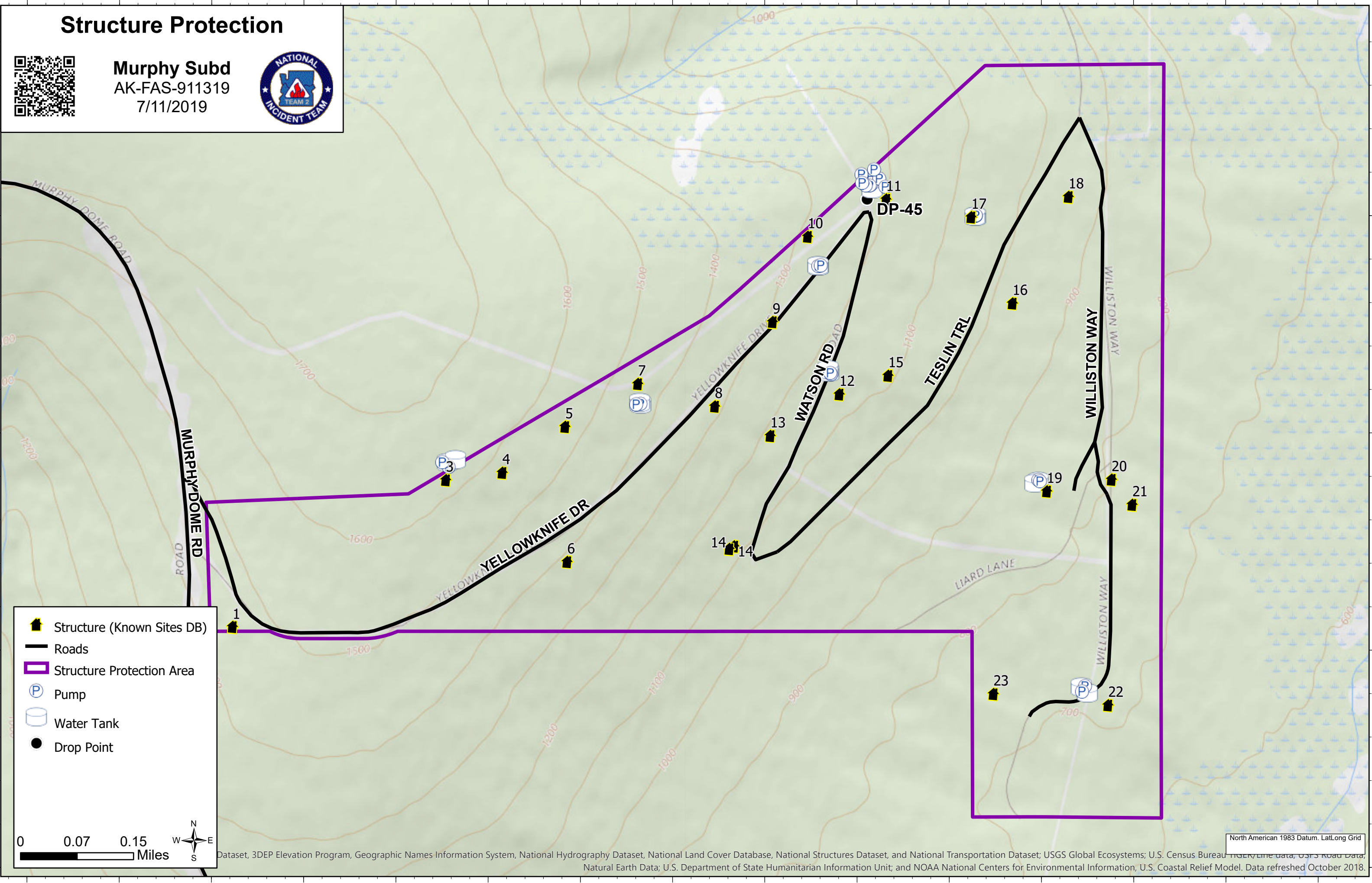
19

18

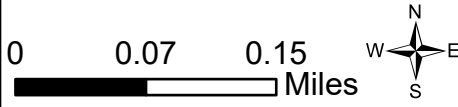
Structure Protection



Murphy Subd
AK-FAS-911319
7/11/2019



- Structure (Known Sites DB)
- Roads
- Structure Protection Area
- Pump
- Water Tank
- Drop Point



North American 1983 Datum, Lat/Long Grid
Dataset, 3DEP Elevation Program, Geographic Names Information System, National Hydrography Dataset, National Land Cover Database, National Structures Dataset, and National Transportation Dataset; USGS Global Ecosystems; U.S. Census Bureau TIGER/Line data, USFS Road Data, Natural Earth Data; U.S. Department of State Humanitarian Information Unit; and NOAA National Centers for Environmental Information, U.S. Coastal Relief Model. Data refreshed October 2018.

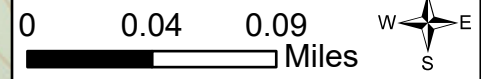
Structure Protection



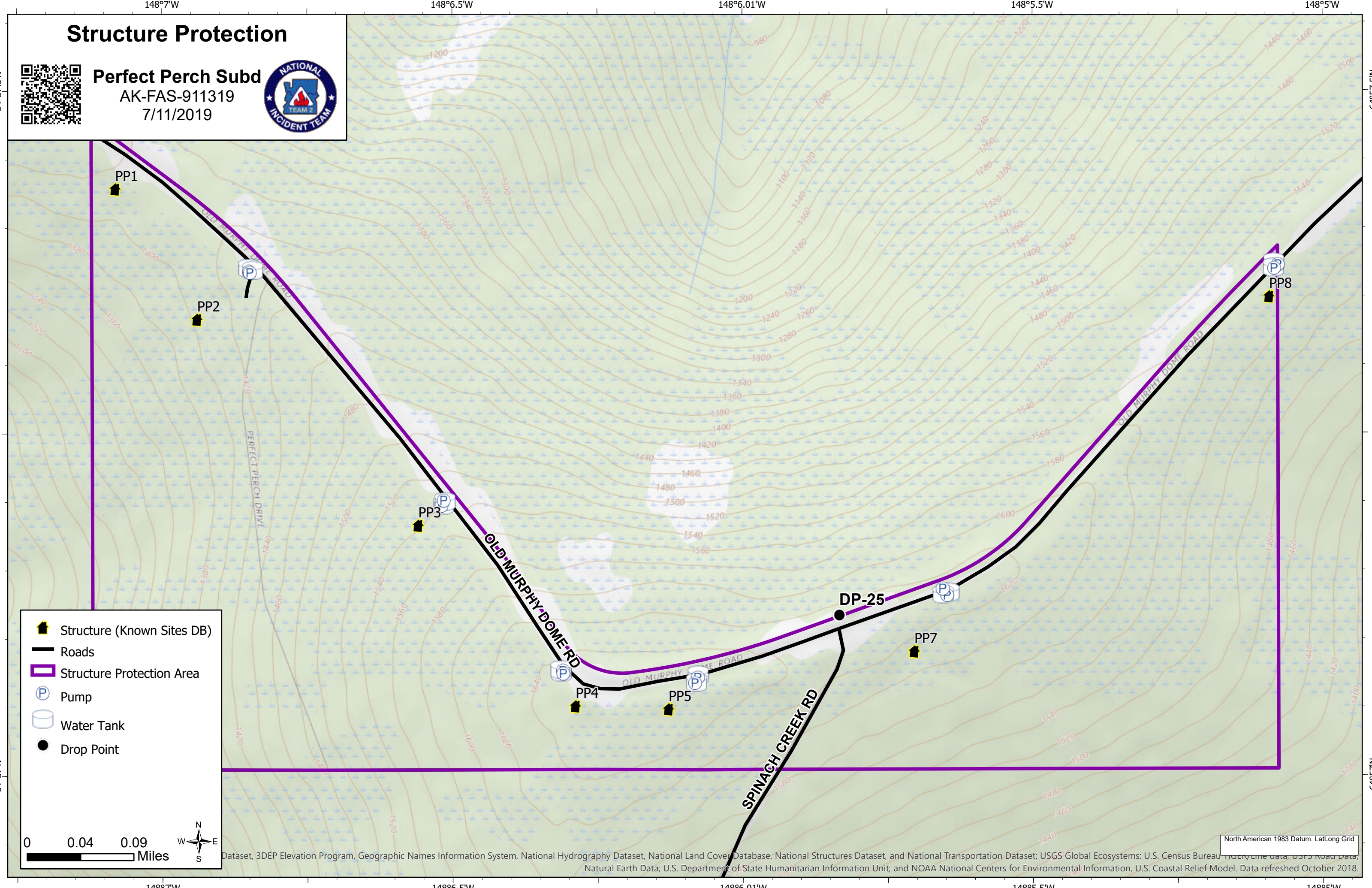
Perfect Perch Subd
AK-FAS-911319
7/11/2019



- Structure (Known Sites DB)
- Roads
- Structure Protection Area
- Pump
- Water Tank
- Drop Point



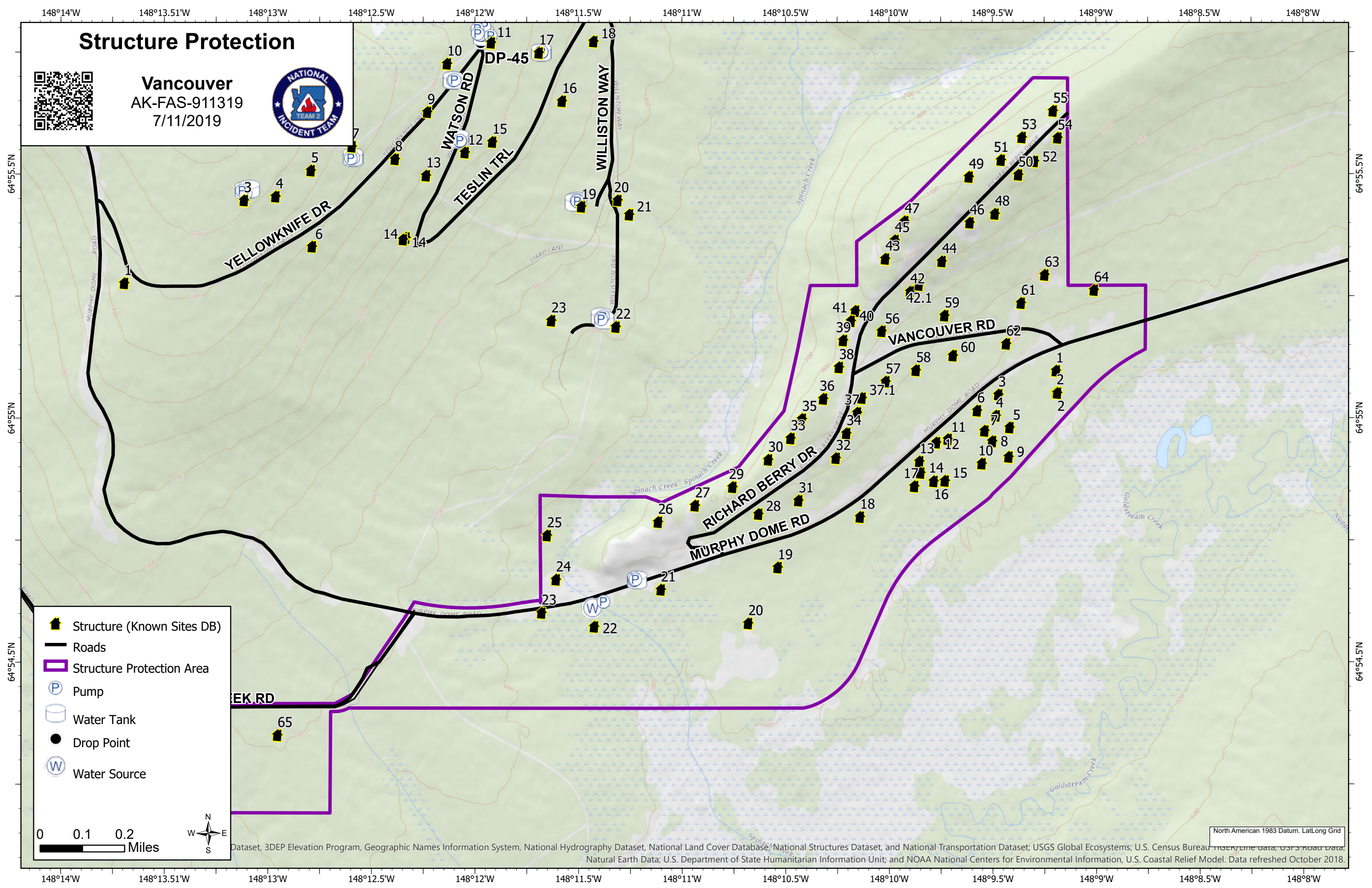
Dataset, 3DEP Elevation Program, Geographic Names Information System, National Hydrography Dataset, National Land Cover Database, National Structures Dataset, and National Transportation Dataset; USGS Global Ecosystems; U.S. Census Bureau TIGER/Line data, USFS Road Data, Natural Earth Data; U.S. Department of State Humanitarian Information Unit; and NOAA National Centers for Environmental Information, U.S. Coastal Relief Model. Data refreshed October 2018.



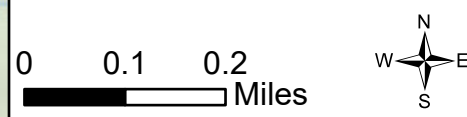
Structure Protection



Vancouver
AK-FAS-911319
7/11/2019



- Structure (Known Sites DB)
- Roads
- Structure Protection Area
- Pump
- Water Tank
- Drop Point
- Water Source



North American 1983 Datum, Lat/Long Grid
Dataset, 3DEP Elevation Program, Geographic Names Information System, National Hydrography Dataset, National Land Cover Database, National Structures Dataset, and National Transportation Dataset; USGS Global Ecosystems; U.S. Census Bureau TIGER/Line data, USFS Road Data, Natural Earth Data; U.S. Department of State Humanitarian Information Unit; and NOAA National Centers for Environmental Information, U.S. Coastal Relief Model. Data refreshed October 2018.