

Shovel Creek Fire AK-FAS-911319 Transportation Map

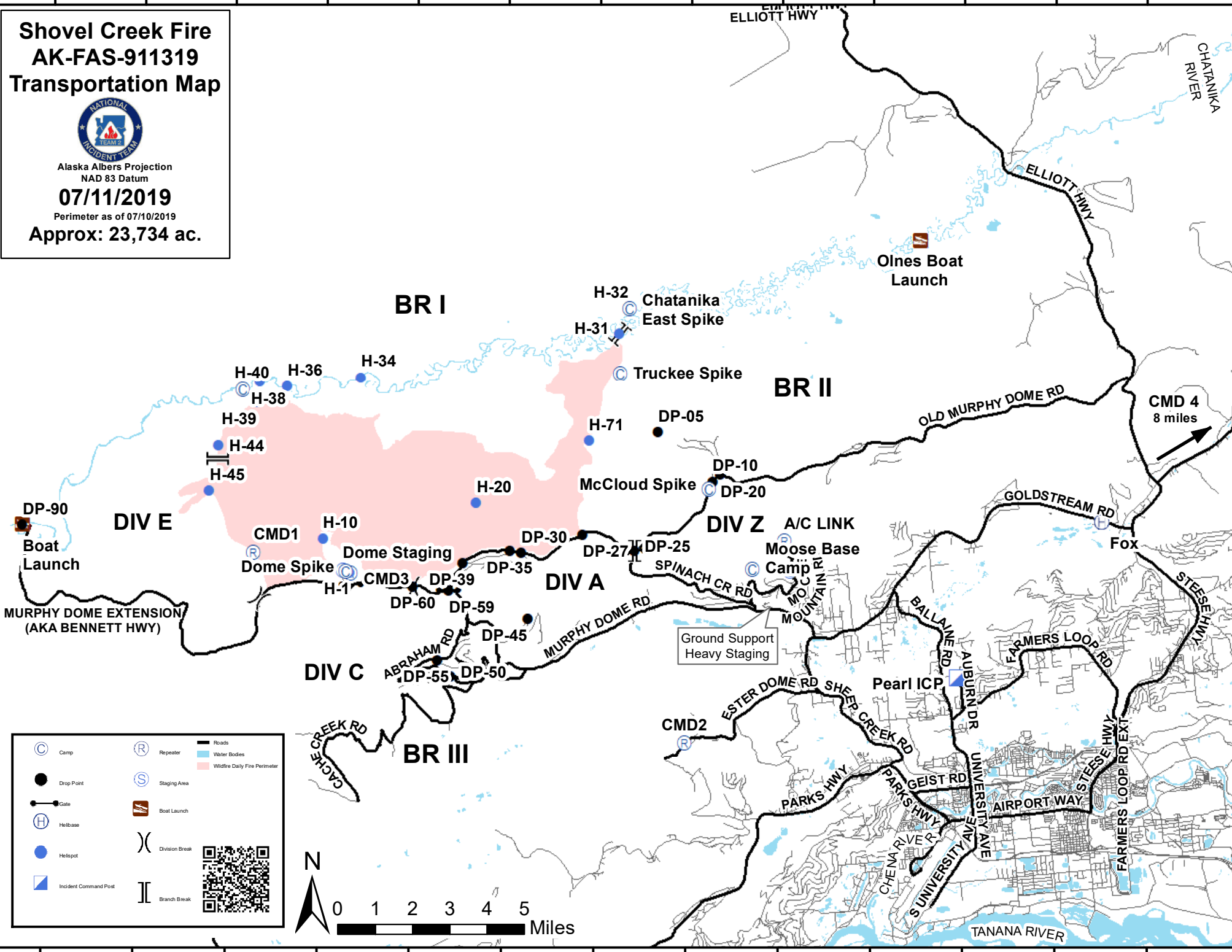


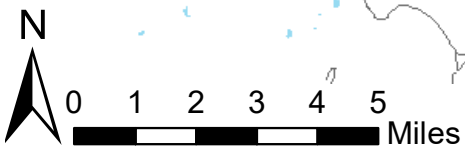
Alaska Albers Projection
NAD 83 Datum

07/11/2019

Perimeter as of 07/10/2019

Approx: 23,734 ac.





148°40'0"W 148°35'0"W 148°30'0"W 148°25'0"W 148°20'0"W 148°15'0"W 148°10'0"W 148°5'0"W 148°0'0"W 147°55'0"W 147°50'0"W 147°45'0"W 147°40'0"W

65°10'0"N
65°5'0"N
65°0'0"N
64°55'0"N
64°50'0"N

147°35'0"W
147°30'0"W
147°25'0"W
147°20'0"W
147°15'0"W
147°10'0"W
147°5'0"W
147°0'0"W