

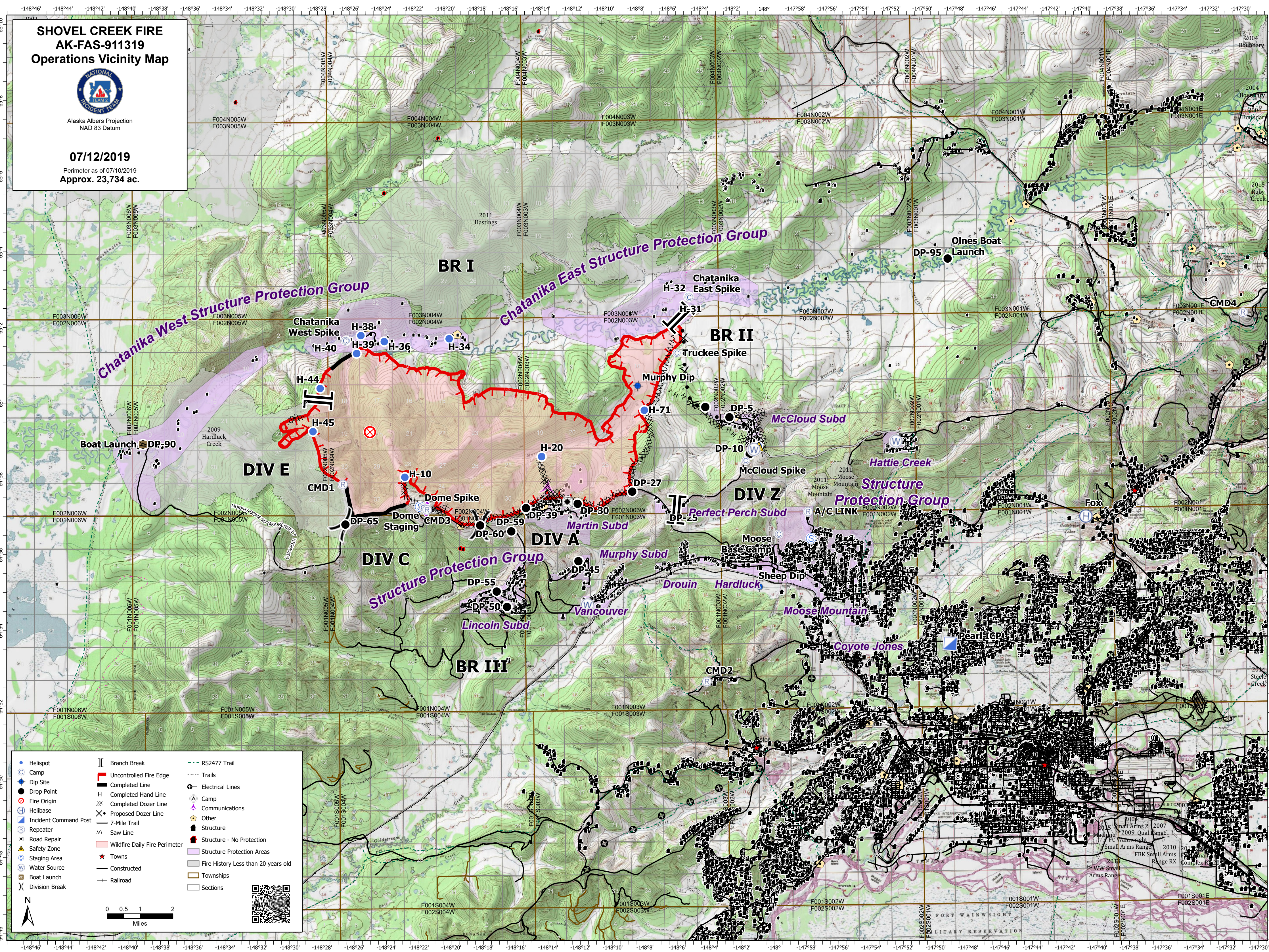
SHOVEL CREEK FIRE AK-FAS-911319 Operations Vicinity Map



Alaska Albers Projection
NAD 83 Datum

07/12/2019

Perimeter as of 07/10/2019
Approx. 23,734 ac.



● Helispot	⊥ Branch Break	--- RS2477 Trail
○ Camp	— Uncontrolled Fire Edge	--- Trails
● Dip Site	— Completed Line	⊙ Electrical Lines
● Drop Point	— Completed Hand Line	⊙ Camp
● Fire Origin	— Completed Dozer Line	⊙ Communications
● Helibase	— Proposed Dozer Line	⊙ Other
⊙ Incident Command Post	— 7-Mile Trail	⊙ Structure
⊙ Repeater	— Saw Line	⊙ Structure - No Protection
⊙ Road Repair	— Wildfire Daily Fire Perimeter	⊙ Structure Protection Areas
⊙ Safety Zone	★ Towns	⊙ Fire History Less than 20 years old
⊙ Staging Area	— Constructed	⊙ Townships
⊙ Water Source	— Railroad	⊙ Sections
⊙ Boat Launch		
⊙ Division Break		

