

**SHOVEL CREEK FIRE
AK-FAS-911319
OPS Map**

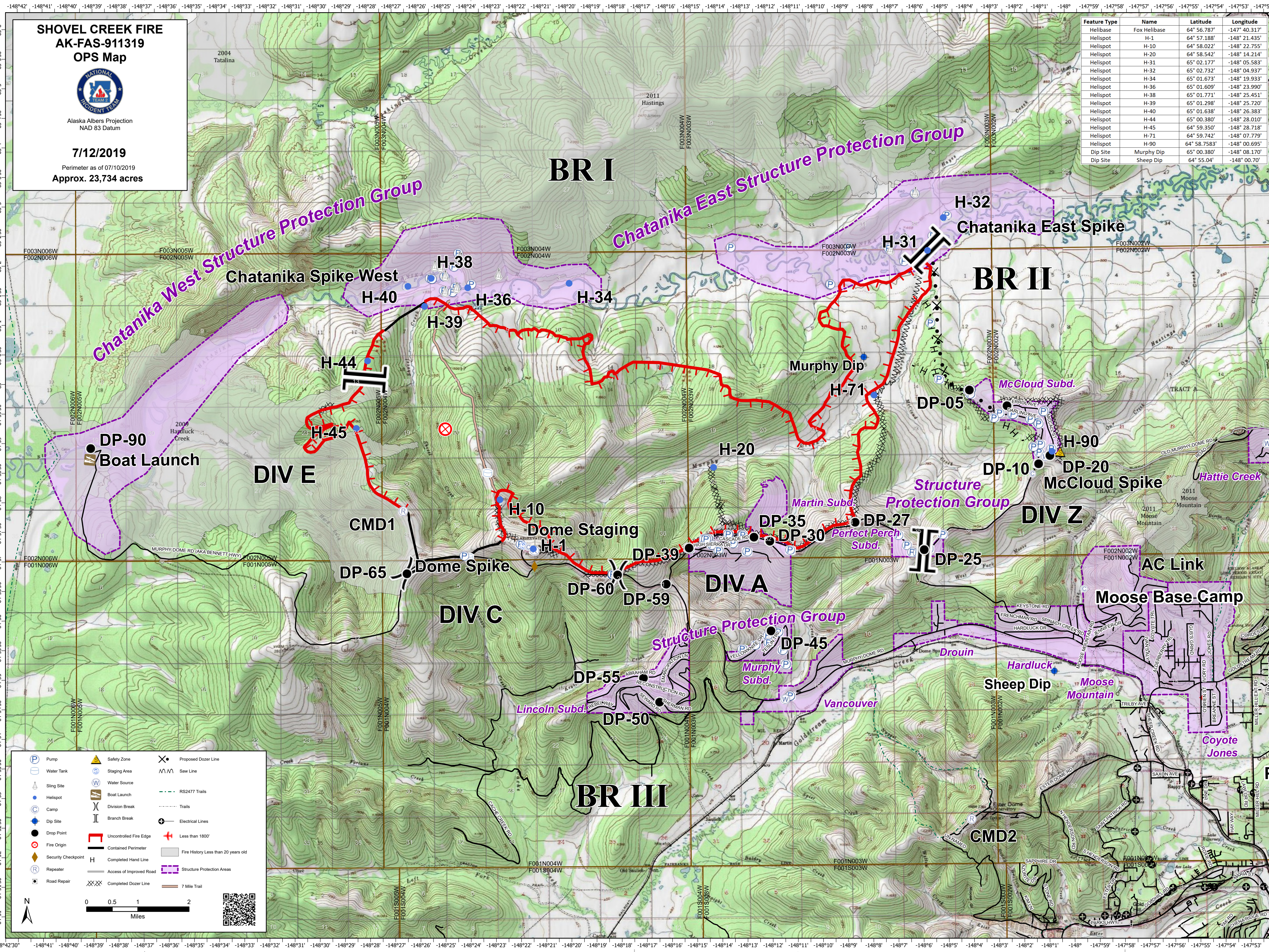


Alaska Albers Projection
NAD 83 Datum

7/12/2019

Perimeter as of 07/10/2019
Approx. 23,734 acres

Feature Type	Name	Latitude	Longitude
Helibase	Fox Helibase	64° 56.787'	-147° 40.317'
Helispot	H-1	64° 57.188'	-148° 21.435'
Helispot	H-10	64° 58.022'	-148° 22.755'
Helispot	H-20	64° 58.542'	-148° 14.214'
Helispot	H-31	65° 02.177'	-148° 05.583'
Helispot	H-32	65° 02.732'	-148° 04.937'
Helispot	H-34	65° 01.673'	-148° 19.933'
Helispot	H-36	65° 01.609'	-148° 23.990'
Helispot	H-38	65° 01.771'	-148° 25.451'
Helispot	H-39	65° 01.298'	-148° 25.720'
Helispot	H-40	65° 01.638'	-148° 26.383'
Helispot	H-44	65° 00.380'	-148° 28.010'
Helispot	H-45	64° 59.350'	-148° 28.718'
Helispot	H-71	64° 59.742'	-148° 07.779'
Helispot	H-90	64° 58.7583'	-148° 00.695'
Dip Site	Murphy Dip	65° 00.380'	-148° 08.170'
Dip Site	Sheep Dip	64° 55.04'	-148° 00.70'



Pump	Safety Zone	Proposed Dozer Line
Water Tank	Staging Area	Saw Line
Sling Site	Water Source	RS2477 Trails
Helispot	Boat Launch	Trails
Camp	Division Break	Electrical Lines
Branch Break	Uncontrolled Fire Edge	Less than 1800'
Drop Point	Completed Hand Line	Fire History Less than 20 years old
Fire Origin	Access of Improved Road	Structure Protection Areas
Security Checkpoint	Completed Dozer Line	7 Mile Trail
Repeater		
Road Repair		

0 0.5 1 2 Miles