

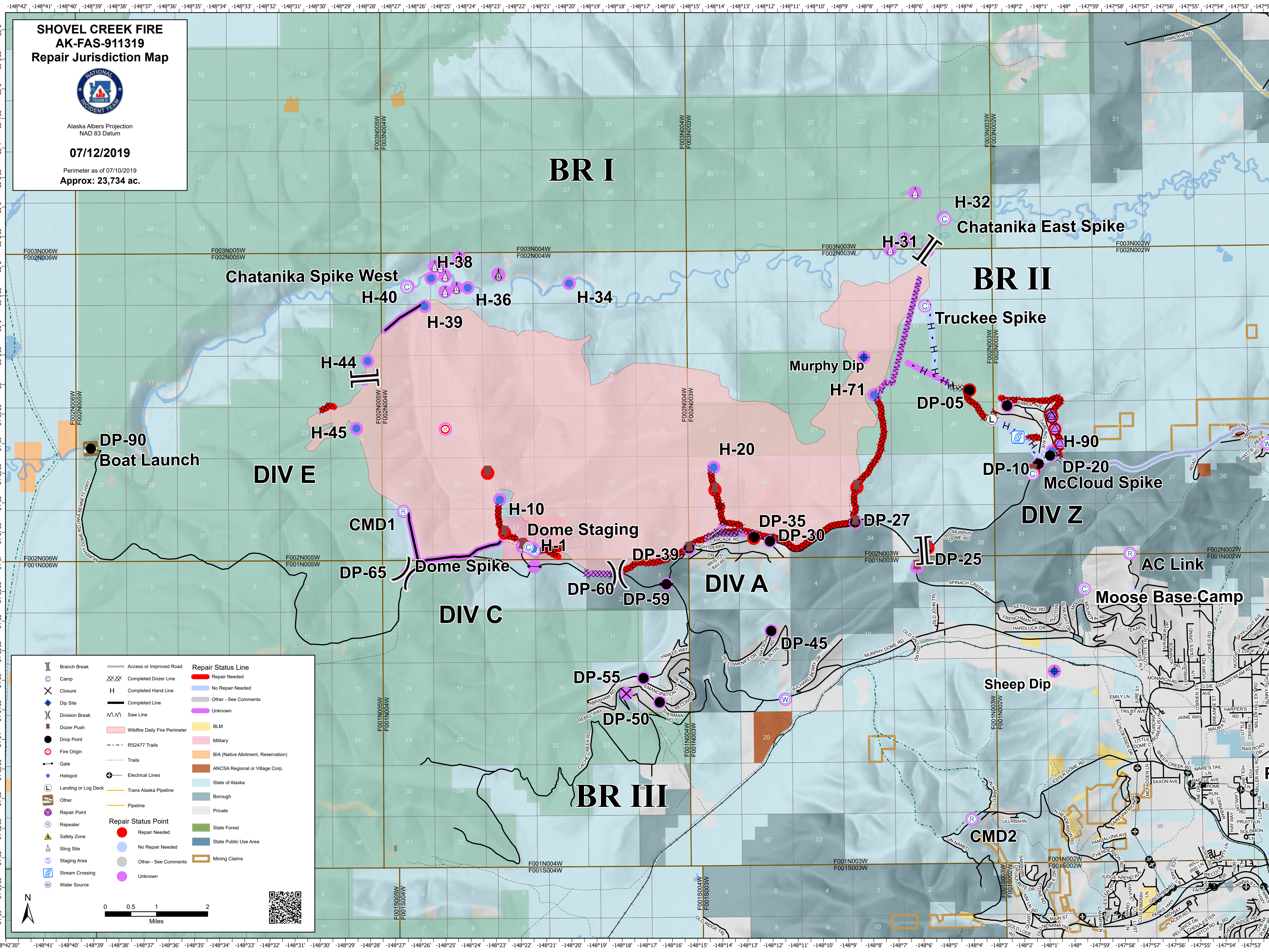
**SHOVEL CREEK FIRE
AK-FAS-911319
Repair Jurisdiction Map**



Alaska Albers Projection
NAD 83 Datum

07/12/2019

Perimeter as of 07/10/2019
Approx: 23,734 ac.



	Branch Break		Access or Improved Road		Repair Status Line
	Camp		Completed Dozer Line		No Repair Needed
	Closure		Completed Hand Line		Other - See Comments
	Dip Site		Saw Line		Unknown
	Division Break		Wildfire Daily Fire Perimeter		BLM
	Dozer Push		RS2477 Trails		Military
	Drop Point		Trails		ANCSA Regional or Village Corp.
	Fire Origin		Electrical Lines		State of Alaska
	Gate		Trans Alaska Pipeline		Borough
	Helispot		Pipeline		Private
	Landing or Log Deck		Repair Status Point		State Forest
	Other		Repair Needed		State Public Use Area
	Repair Point		No Repair Needed		Mining Claims
	Repeater		Other - See Comments		
	Safety Zone		Unknown		
	Sling Site				
	Staging Area				
	Stream Crossing				
	Water Source				

0 0.5 1 2 Miles