

Shovel Creek Fire AK-FAS-911319 Transportation Detail Map



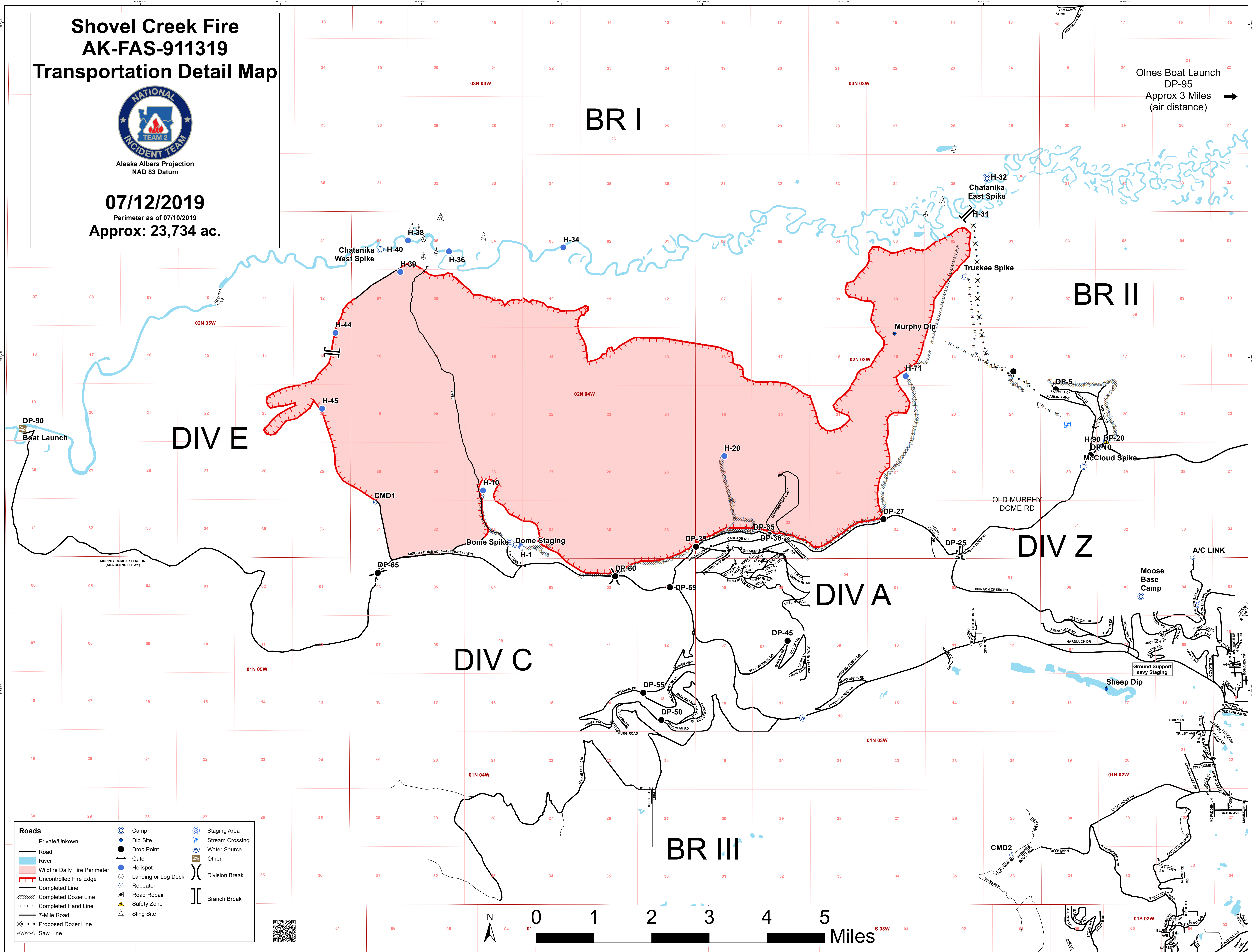
Alaska Albers Projection
NAD 83 Datum

07/12/2019

Perimeter as of 07/10/2019

Approx: 23,734 ac.

Olmes Boat Launch
DP-95
Approx 3 Miles
(air distance) →



Roads		
	Private/Unknown	
	Road	
	River	
	Wildfire Daily Fire Perimeter	
	Uncontrolled Fire Edge	
	Completed Line	
	Completed Dozer Line	
	Completed Hand Line	
	7-Mile Road	
	Proposed Dozer Line	
	Saw Line	

	Camp		Staging Area
	Dip Site		Stream Crossing
	Drop Point		Water Source
	Gate		Other
	Helispot		Division Break
	Landing or Log Deck		Branch Break
	Repeater		
	Road Repair		
	Safety Zone		
	Sling Site		

