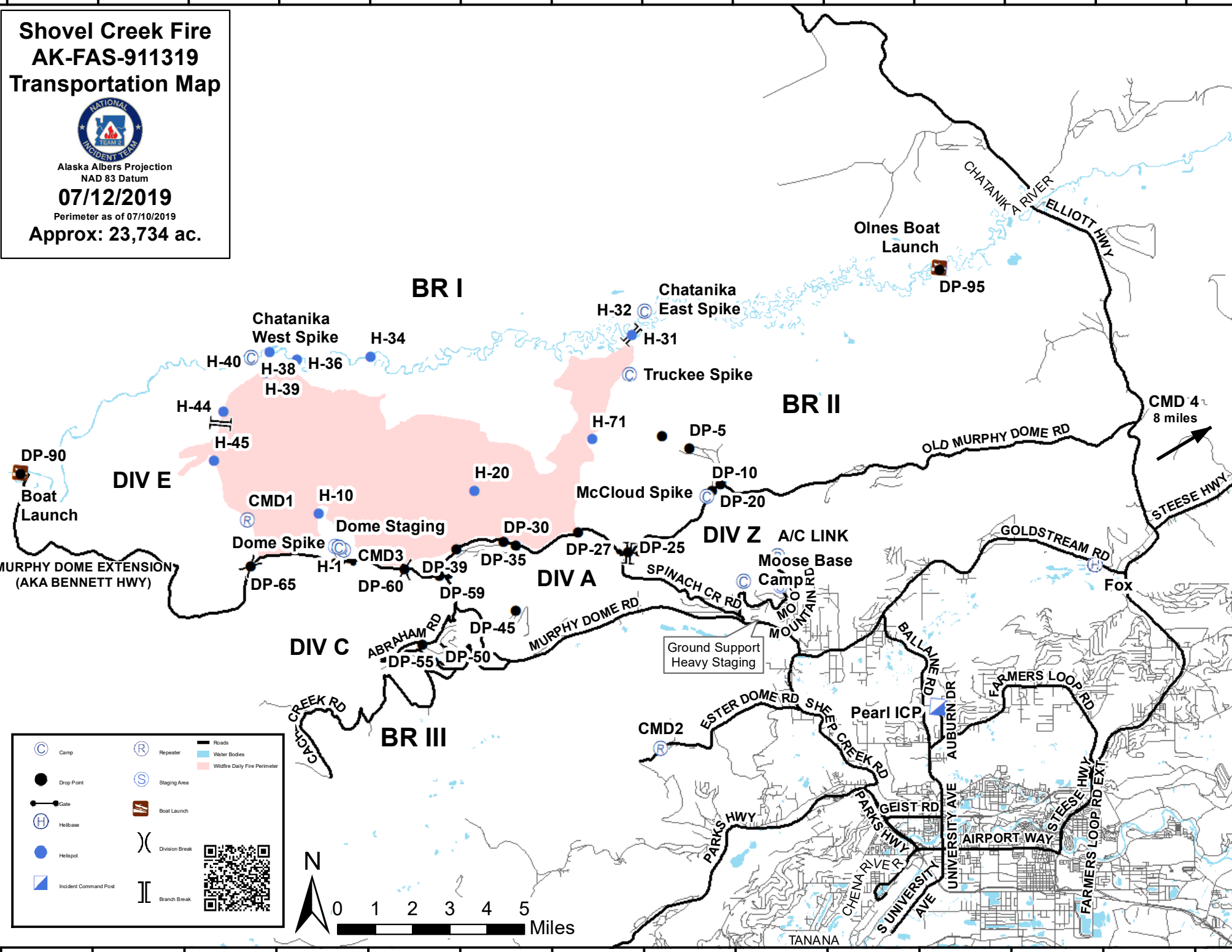



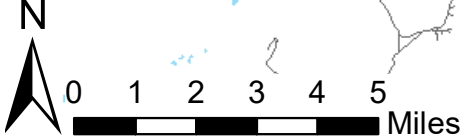
Shovel Creek Fire AK-FAS-911319 Transportation Map



Alaska Albers Projection
NAD 83 Datum
07/12/2019
Perimeter as of 07/10/2019
Approx: 23,734 ac.



	Camp		Repeater		Roads
	Drop Point		Staging Area		Water Bodies
	Helibase		Boat Launch		Wildfire Daily Fire Perimeter
	Helispot		Division Break		
	Incident Command Post		Branch Break		

148°40'0"W 148°35'0"W 148°30'0"W 148°25'0"W 148°20'0"W 148°15'0"W 148°10'0"W 148°5'0"W 148°0'0"W 147°55'0"W 147°50'0"W 147°45'0"W 147°40'0"W 147°35'0"W

66°50'0"N
65°00'0"N
64°55'0"N
64°50'0"N

66°50'0"N
65°00'0"N
64°55'0"N
64°50'0"N