

**SHOVEL CREEK FIRE
AK-FAS-911319
OPS Map**

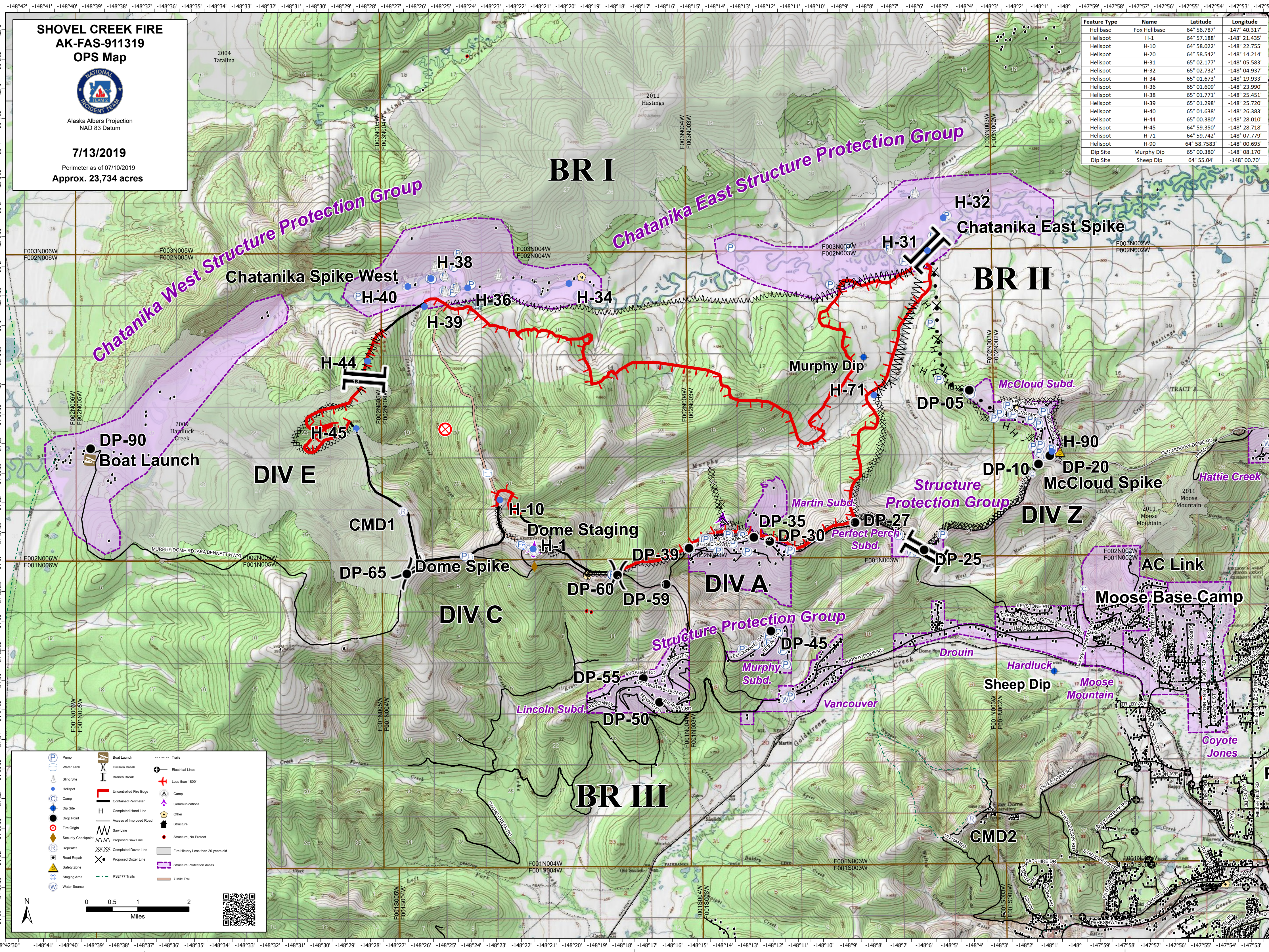


Alaska Albers Projection
NAD 83 Datum

7/13/2019

Perimeter as of 07/10/2019
Approx. 23,734 acres

Feature Type	Name	Latitude	Longitude
Helibase	Fox Helibase	64° 56.787'	-147° 40.317'
Helispot	H-1	64° 57.188'	-148° 21.435'
Helispot	H-10	64° 58.022'	-148° 22.755'
Helispot	H-20	64° 58.542'	-148° 14.214'
Helispot	H-31	65° 02.177'	-148° 05.583'
Helispot	H-32	65° 02.732'	-148° 04.937'
Helispot	H-34	65° 01.673'	-148° 19.933'
Helispot	H-36	65° 01.609'	-148° 23.990'
Helispot	H-38	65° 01.771'	-148° 25.451'
Helispot	H-39	65° 01.298'	-148° 25.720'
Helispot	H-40	65° 01.638'	-148° 26.383'
Helispot	H-44	65° 00.380'	-148° 28.010'
Helispot	H-45	64° 59.350'	-148° 28.718'
Helispot	H-71	64° 59.742'	-148° 07.779'
Helispot	H-90	64° 58.7583'	-148° 00.695'
Dip Site	Murphy Dip	65° 00.380'	-148° 08.170'
Dip Site	Sheep Dip	64° 55.04'	-148° 00.70'



	Pump		Boat Launch		Trails
	Water Tank		Division Break		Electrical Lines
	Sling Site		Branch Break		Less than 1500'
	Helispot		Camp		Camp
	Camp		Contained Perimeter		Communications
	Dip Site		Completed Hand Line		Other
	Drop Point		Access of Improved Road		Structure
	Fire Origin		Saw Line		Structure, No Protect
	Security Checkpoint		Proposed Saw Line		Fire History Less than 20 years old
	Repeater		Completed Dozer Line		Structure Protection Areas
	Road Repair		Proposed Dozer Line		
	Safety Zone		RS2477 Trails		
	Staging Area				
	Water Source				

0 0.5 1 2 Miles