

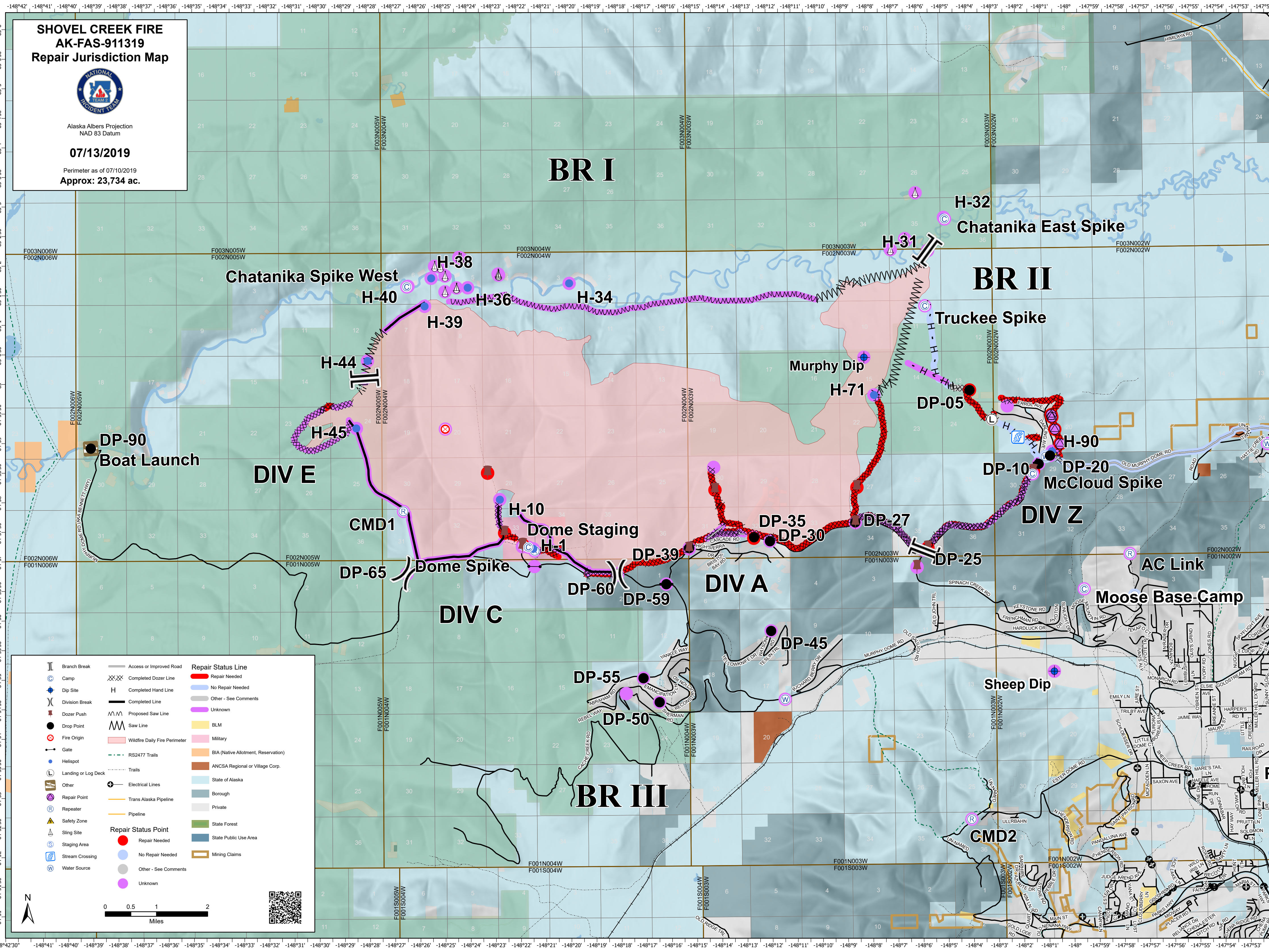
**SHOVEL CREEK FIRE  
AK-FAS-911319  
Repair Jurisdiction Map**



Alaska Albers Projection  
NAD 83 Datum

**07/13/2019**

Perimeter as of 07/10/2019  
Approx: 23,734 ac.



	Branch Break		Access or Improved Road		Repair Status Line
	Camp		Completed Dozer Line		Repair Needed
	Dip Site		Completed Hand Line		No Repair Needed
	Division Break		Proposed Saw Line		Other - See Comments
	Dozer Push		Saw Line		Unknown
	Drop Point		Wildfire Daily Fire Perimeter		BLM
	Fire Origin		RS2477 Trails		Military
	Gate		Trails		BIA (Native Allotment, Reservation)
	Helispot		Electrical Lines		ANCSA Regional or Village Corp.
	Landing or Log Deck		Trans Alaska Pipeline		State of Alaska
	Other		Pipeline		Borough
	Repair Point		Repair Status Point		Private
	Repeater		Repair Needed		State Forest
	Safety Zone		No Repair Needed		State Public Use Area
	Sling Site		Other - See Comments		Mining Claims
	Staging Area		Unknown		
	Stream Crossing				
	Water Source				

