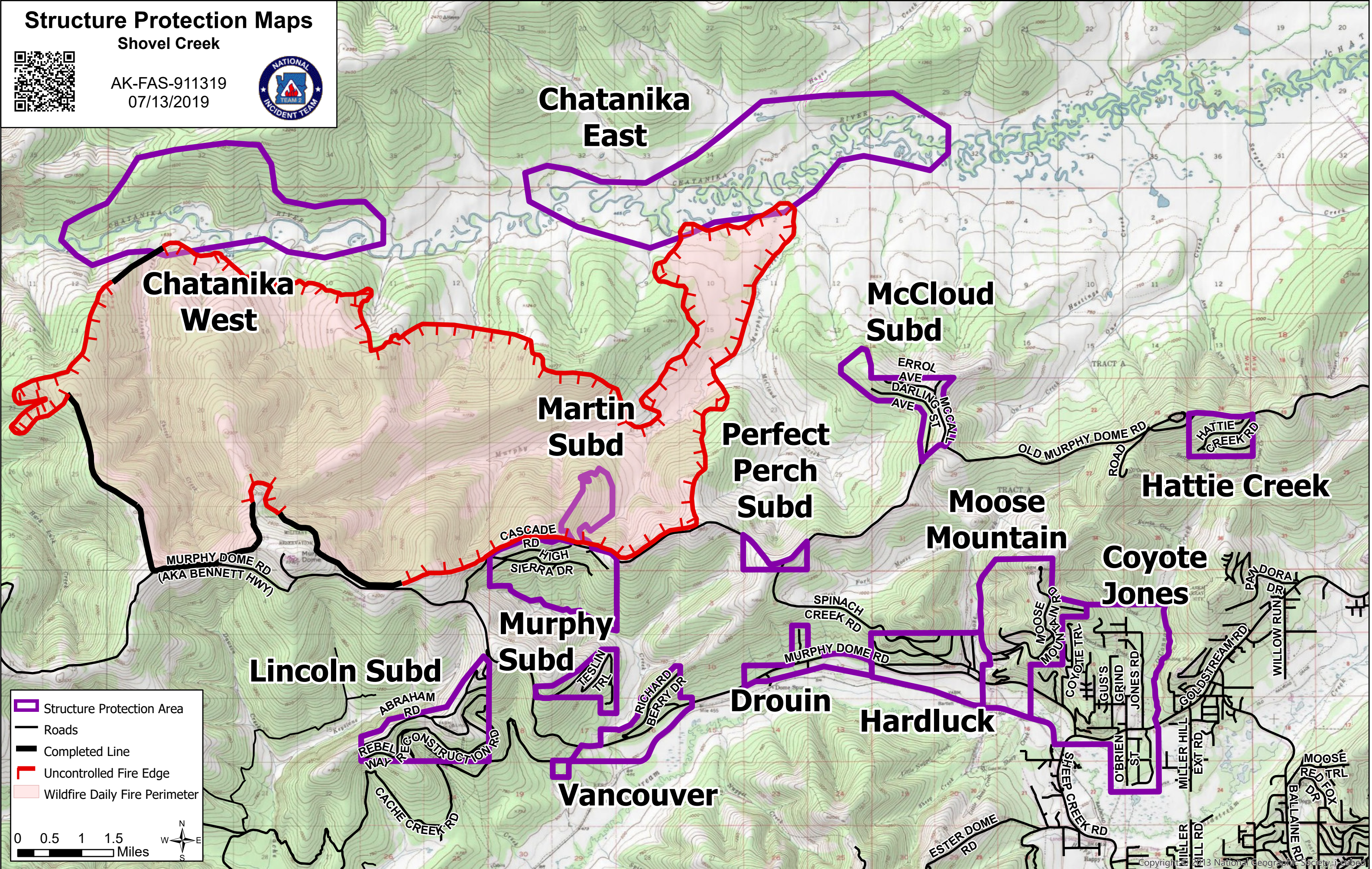


Structure Protection Maps

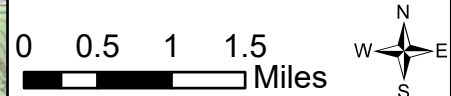
Shovel Creek



AK-FAS-911319
07/13/2019

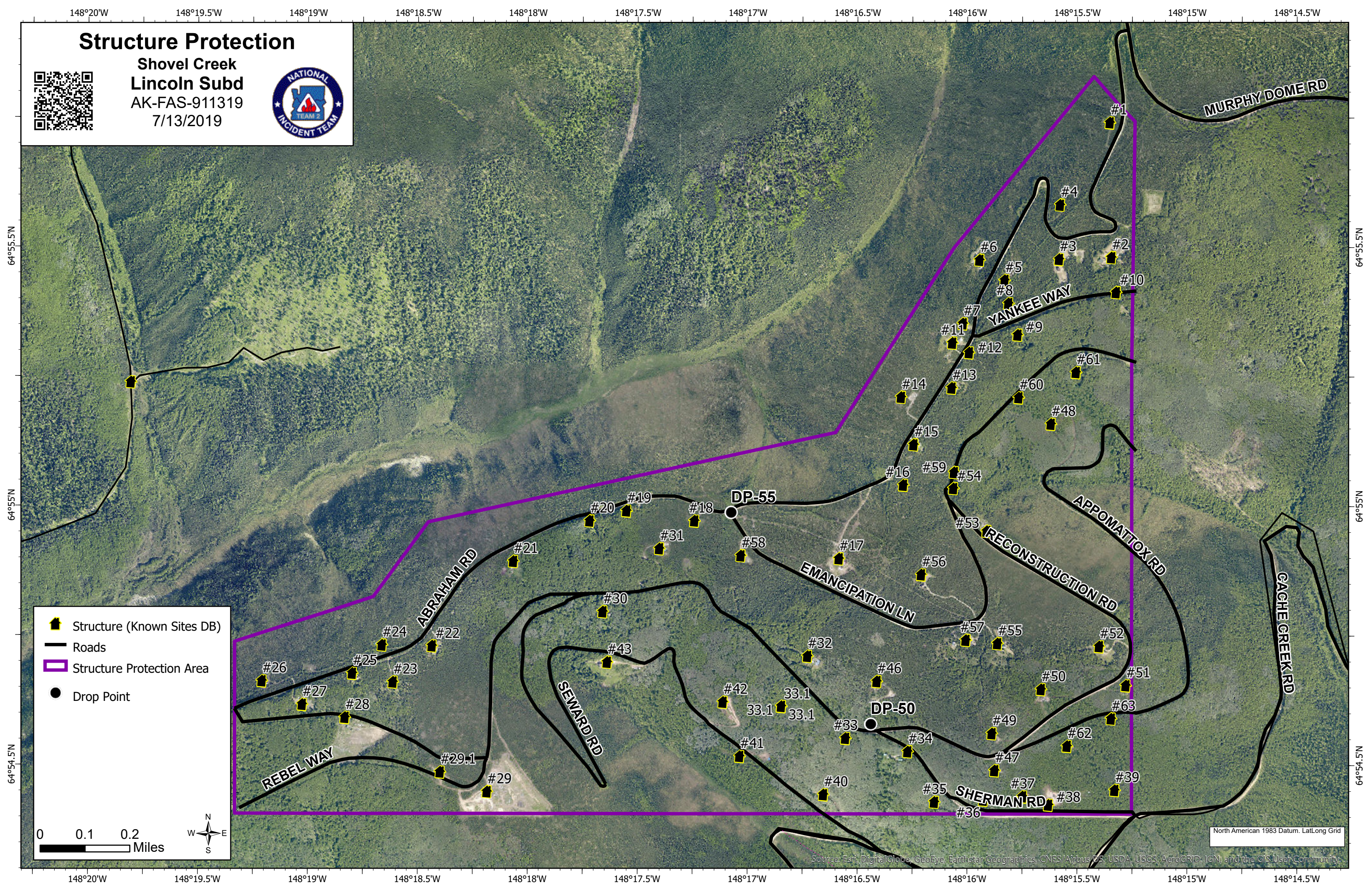


- Structure Protection Area
- Roads
- Completed Line
- Uncontrolled Fire Edge
- Wildfire Daily Fire Perimeter

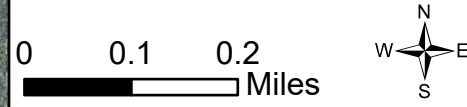


Structure Protection

Shovel Creek
Lincoln Subd
AK-FAS-911319
7/13/2019



- Structure (Known Sites DB)
- Roads
- Structure Protection Area
- Drop Point

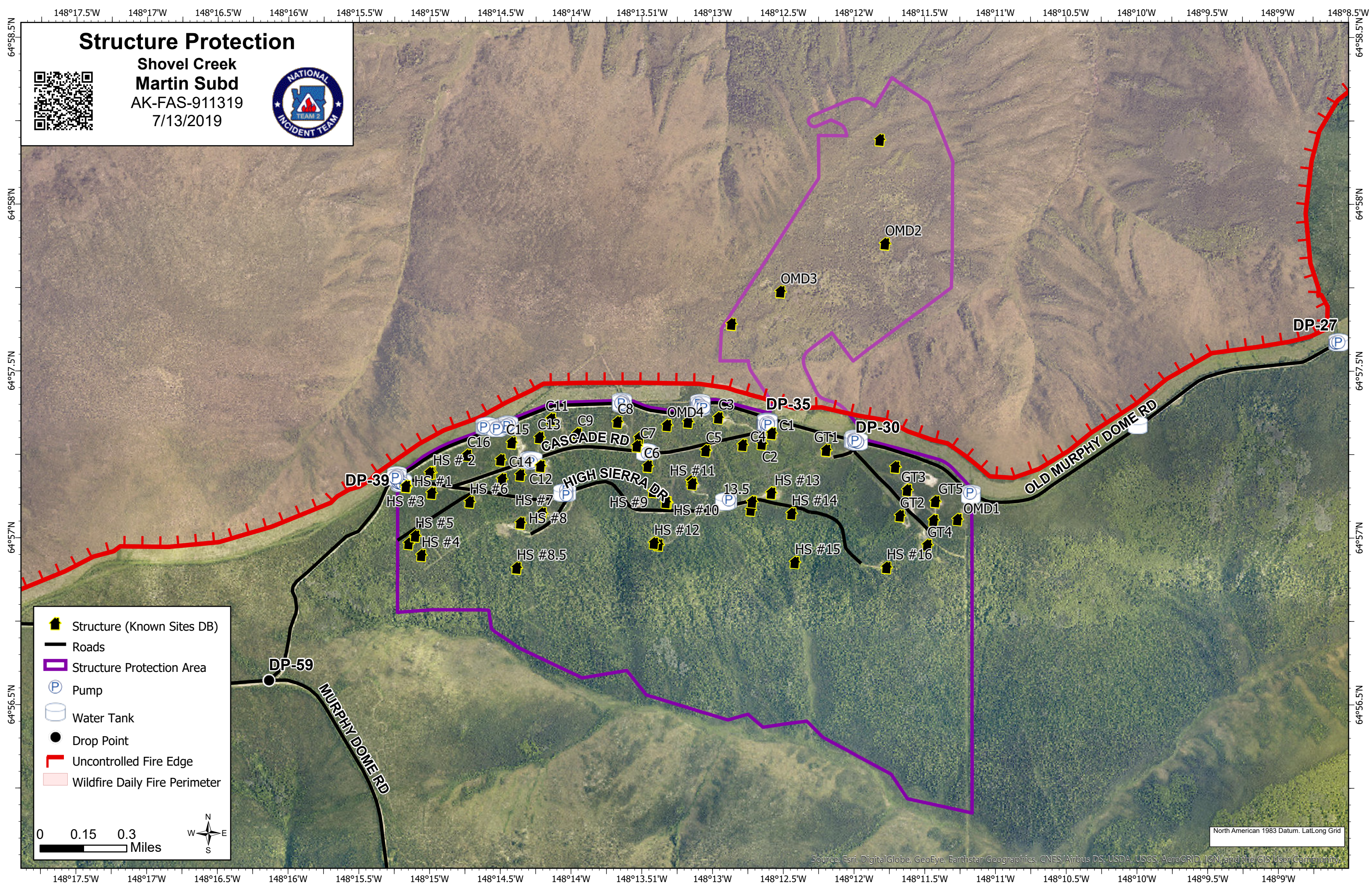


North American 1983 Datum. Lat/Long Grid

Source: Esri, DigitalGlobe, GeoEye, Earthstar Geographics, CNES/Airbus DS, USDA, USGS, AeroGRID, IGN, and the GIS User Community

Structure Protection

Shovel Creek
Martin Subd
AK-FAS-911319
7/13/2019



- Structure (Known Sites DB)
- Roads
- Structure Protection Area
- Pump
- Water Tank
- Drop Point
- Uncontrolled Fire Edge
- Wildfire Daily Fire Perimeter

0 0.15 0.3 Miles

North American 1983 Datum, Lat/Long Grid

Source: Esri, DigitalGlobe, GeoEye, Earthstar Geographics, CNES/Airbus DS, USDA, USGS, AeroGRID, IGN, and the GIS User Community

Structure Protection

Shovel Creek
McCloud Subd
AK-FAS-911319
7/13/2019



DP-5



38



37



35



32



36



34



ERROL AVE

29



31



30



28



PAUL RD

17



16



13



12



15



14



11



DARLING AVE

8



27



28



9



7



6



5



MCGALL ST

25



26



4



24



23



3



21



1



2



22



20



19



18



20



19



18



18



H-90



DP-20



DP-10



1



2



W



OLD MURPHY DOME RD

- Structure (Known Sites DB)
- Roads
- Structure Protection Area
- Pump
- Water Tank
- Drop Point
- Helispot
- Water Source

0 0.1 0.2 Miles



North American 1983 Datum, Lat/Long Grid

Source: Esri, DigitalGlobe, GeoEye, Earthstar Geographics, CNES/Airbus DS, USDA, USGS, AeroGRID, IGN, and the GIS User Community

148°14'W

148°13.5'W

148°13'W

148°12.5'W

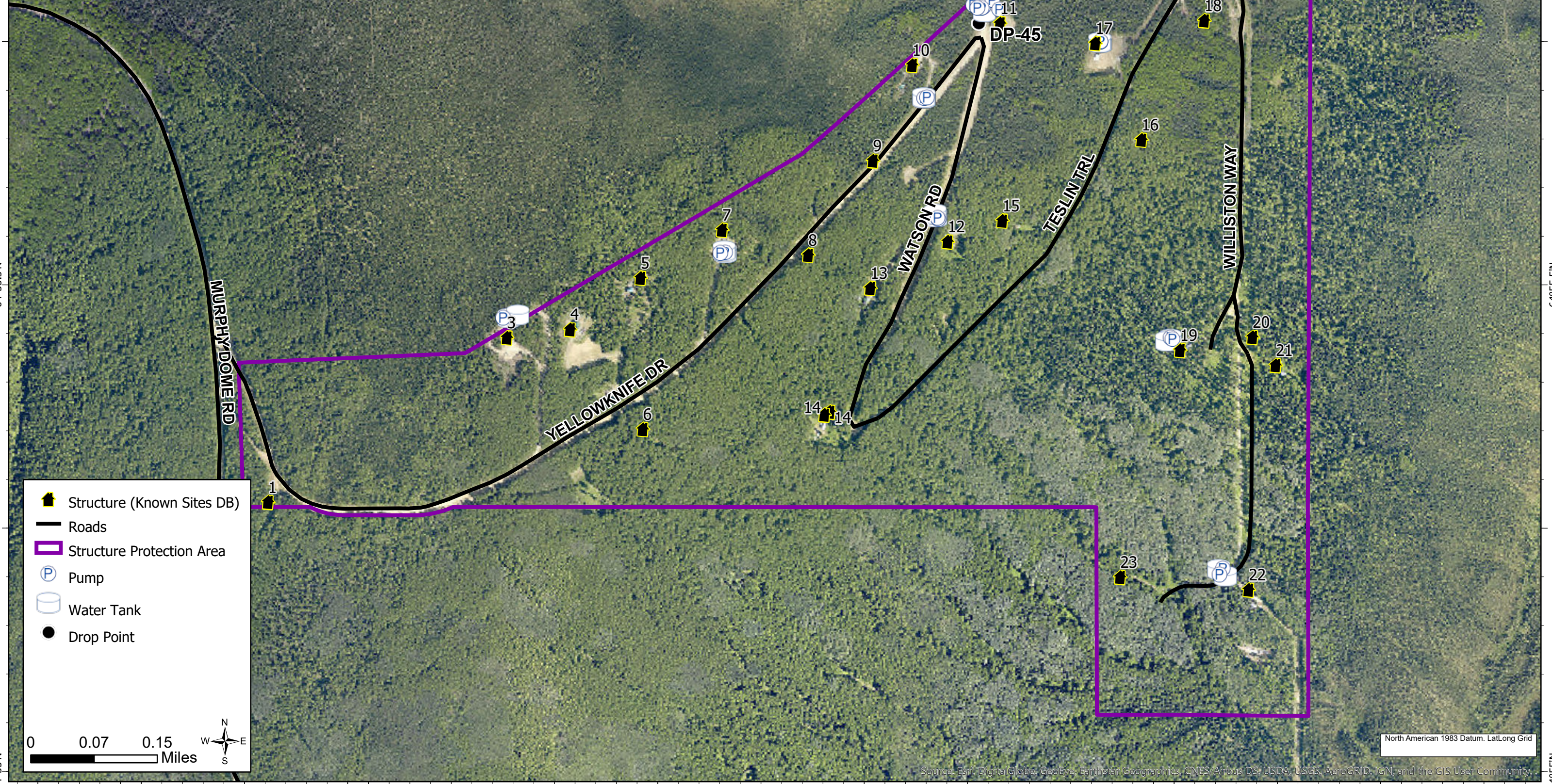
148°12'W

148°11.5'W

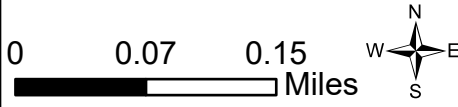
148°11'W

Structure Protection

Shovel Creek
Murphy Subd
AK-FAS-911319
7/13/2019



- Structure (Known Sites DB)
- Roads
- Structure Protection Area
- Pump
- Water Tank
- Drop Point



North American 1983 Datum, LatLong Grid

Source: Esri, DigitalGlobe, GeoEye, Earthstar Geographics, CNES/Airbus DS, USDA, USGS, AeroGRID, IGN, and the GIS User Community

64°55.5'N

64°55.5'N

64°55'N

64°55'N

148°14'W

148°13.5'W

148°13'W

148°12.5'W

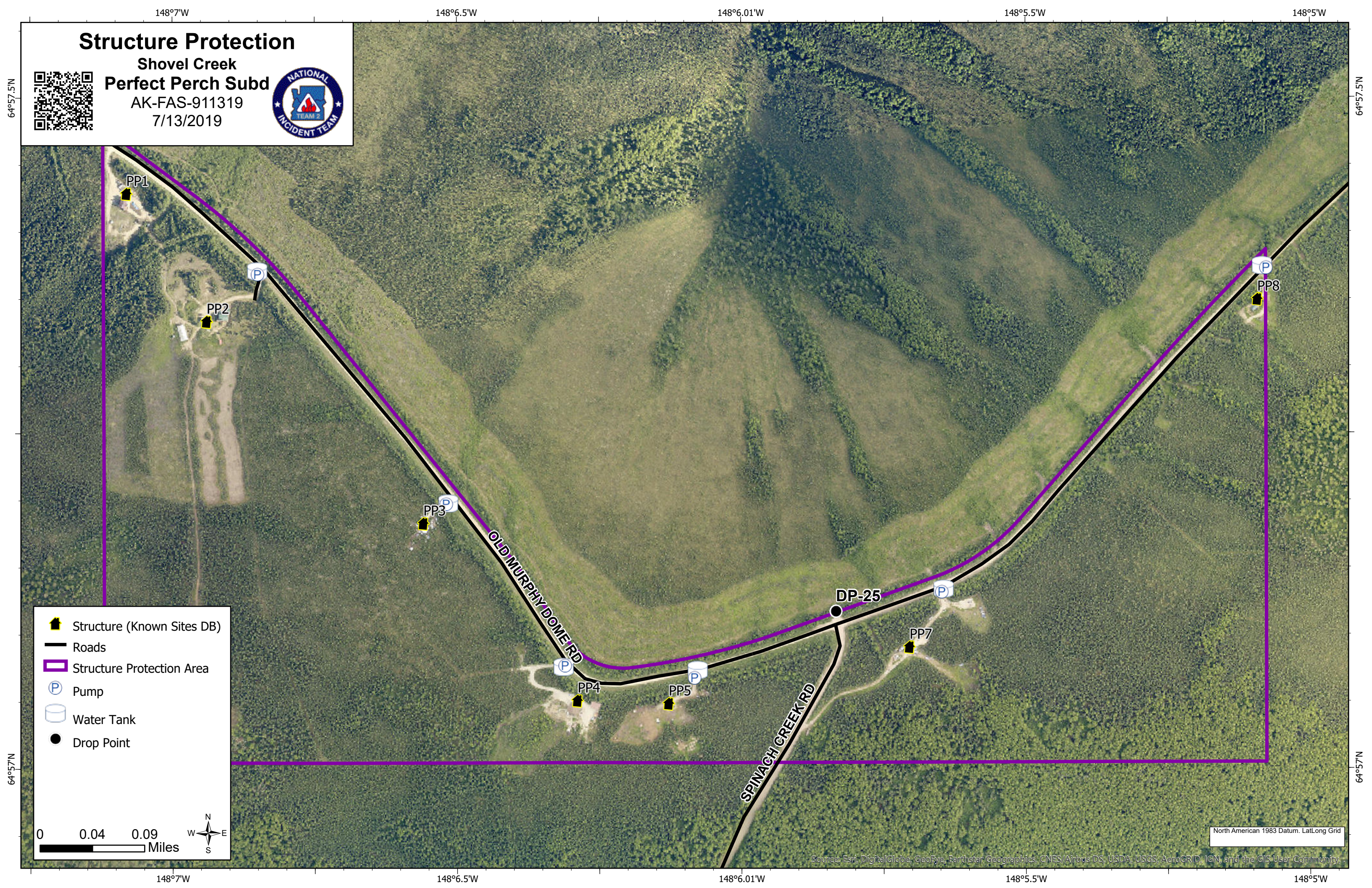
148°12'W

148°11.5'W

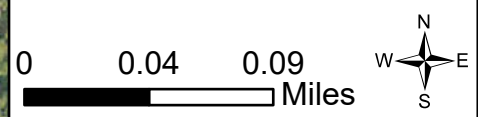
148°11'W

Structure Protection

Shovel Creek
Perfect Perch Subd
AK-FAS-911319
7/13/2019



- Structure (Known Sites DB)
- Roads
- Structure Protection Area
- Pump
- Water Tank
- Drop Point

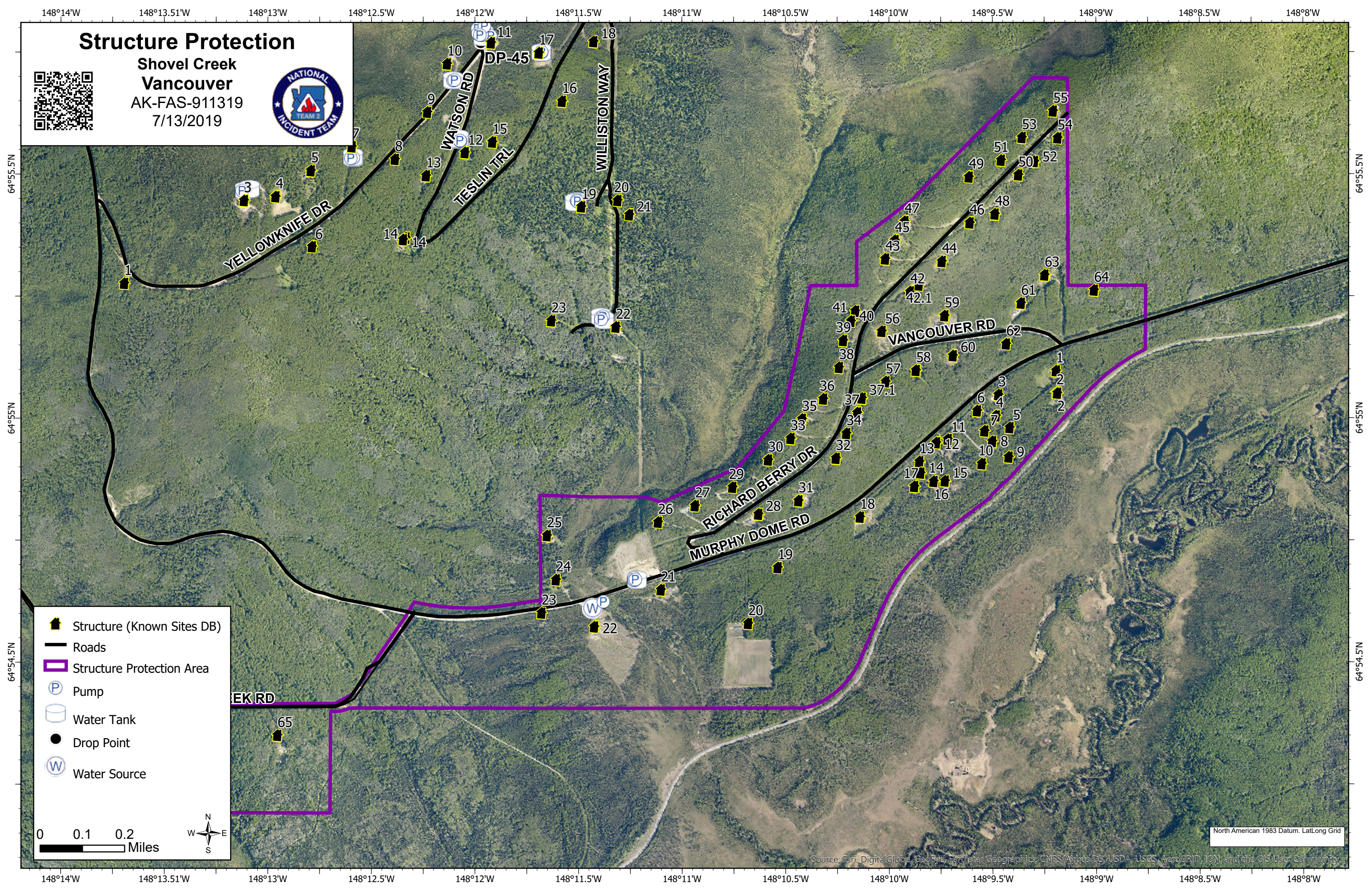


North American 1983 Datum, Lat/Long Grid

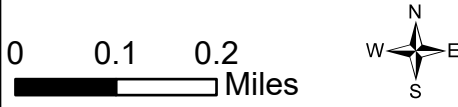
Source: Esri, DigitalGlobe, GeoEye, Earthstar Geographics, CNES/Airbus DS, USDA, USGS, AeroGRID, IGN, and the GIS User Community

Structure Protection

Shovel Creek
Vancouver
AK-FAS-911319
7/13/2019



- Structure (Known Sites DB)
- Roads
- Structure Protection Area
- Pump
- Water Tank
- Drop Point
- Water Source



North American 1983 Datum. Lat/Long Grid

Source: Esri, DigitalGlobe, GeoEye, Earthstar Geographics, CNES/Airbus DS, USDA, USGS, AeroGRID, IGN, and the GIS User Community