

**SHOVEL CREEK FIRE
AK-FAS-911319
OPS Map**

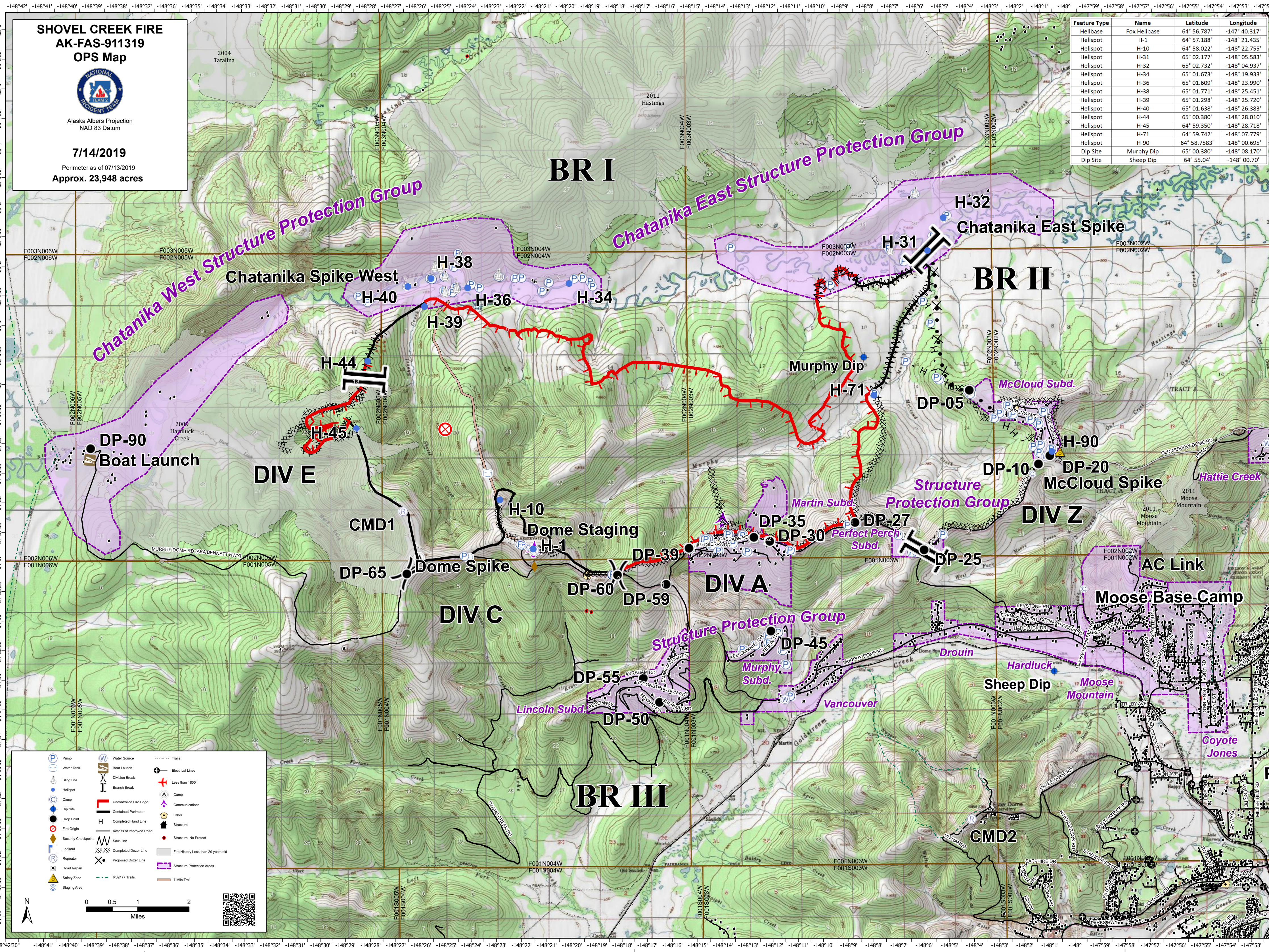


Alaska Albers Projection
NAD 83 Datum

7/14/2019

Perimeter as of 07/13/2019
Approx. 23,948 acres

Feature Type	Name	Latitude	Longitude
Helibase	Fox Helibase	64° 56.787'	-147° 40.317'
Helispot	H-1	64° 57.188'	-148° 21.435'
Helispot	H-10	64° 58.022'	-148° 22.755'
Helispot	H-31	65° 02.177'	-148° 05.583'
Helispot	H-32	65° 02.732'	-148° 04.937'
Helispot	H-34	65° 01.673'	-148° 19.933'
Helispot	H-36	65° 01.609'	-148° 23.990'
Helispot	H-38	65° 01.771'	-148° 25.451'
Helispot	H-39	65° 01.298'	-148° 25.720'
Helispot	H-40	65° 01.638'	-148° 26.383'
Helispot	H-44	65° 00.380'	-148° 28.010'
Helispot	H-45	64° 59.350'	-148° 28.718'
Helispot	H-71	64° 59.742'	-148° 07.779'
Helispot	H-90	64° 58.7583'	-148° 00.695'
Dip Site	Murphy Dip	65° 00.380'	-148° 08.170'
Dip Site	Sheep Dip	64° 55.04'	-148° 00.70'



Pump	Water Source	Trails
Water Tank	Boat Launch	Electrical Lines
Sling Site	Division Break	Less than 1800'
Helispot	Branch Break	Camp
Camp	Uncontrolled Fire Edge	Communications
Dip Site	Contained Perimeter	Other
Drop Point	Completed Hand Line	Structure
Fire Origin	Access of Improved Road	Structure, No Protect
Security Checkpoint	Saw Line	Fire History Less than 20 years old
Lookout	Completed Dozer Line	Structure Protection Areas
Road Repair	Proposed Dozer Line	7 Mile Trail
Safety Zone	RS2477 Trails	
Staging Area		

0 0.5 1 2
Miles