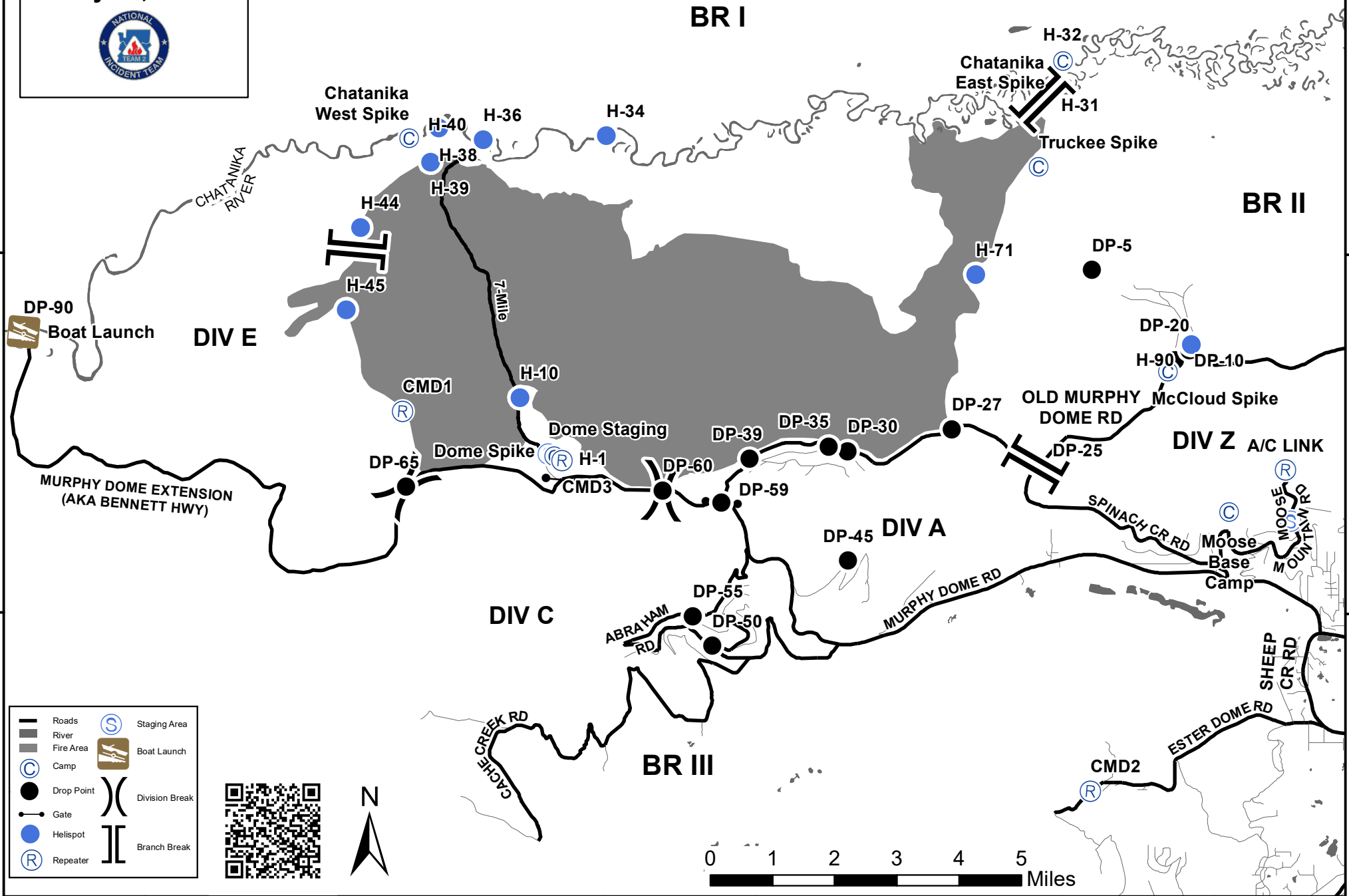


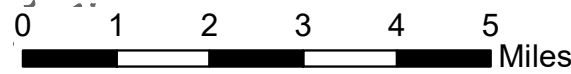
Shovel Creek Fire AK-FAS-911319 Medical Map July 14, 2019



Olmes Boat Launch
DP-95
Approx 3 Miles
(air distance)



- Roads
- River
- Fire Area
- Camp
- Drop Point
- Helispot
- Repeater
- Staging Area
- Boat Launch
- Division Break
- Branch Break



148°35'0"W 148°30'0"W 148°25'0"W 148°20'0"W 148°15'0"W 148°10'0"W 148°5'0"W 148°0'0"W

65°50'0"N 65°0'0"N 64°50'0"N

65°50'0"N 65°0'0"N 64°50'0"N