

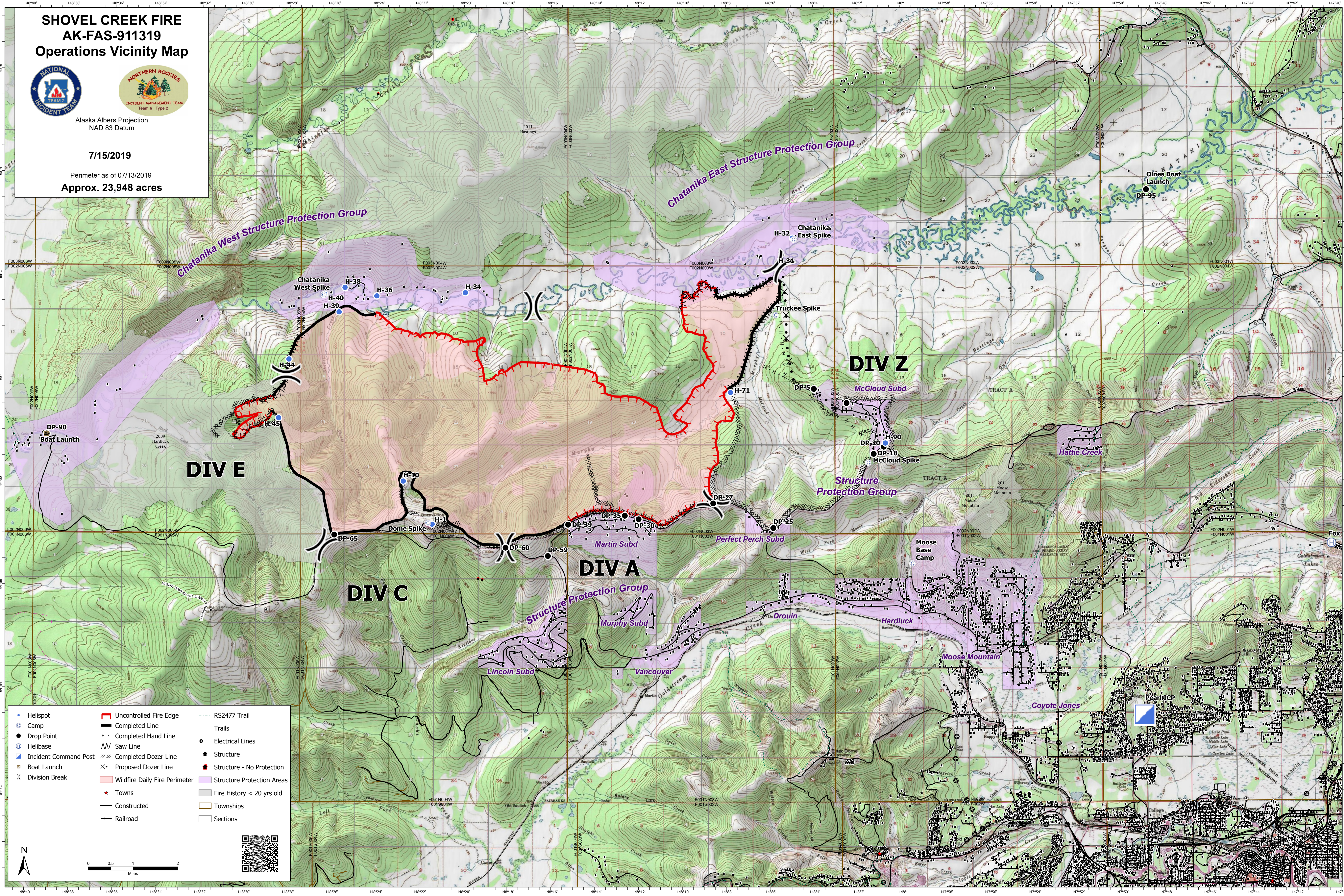
SHOVEL CREEK FIRE AK-FAS-911319 Operations Vicinity Map



Alaska Albers Projection
NAD 83 Datum

7/15/2019

Perimeter as of 07/13/2019
Approx. 23,948 acres



• Helispot	■ Uncontrolled Fire Edge	- - - RS2477 Trail
● Camp	— Completed Line	--- Trails
○ Drop Point	H - Completed Hand Line	⊕ Electrical Lines
⊕ Helibase	⊕ Saw Line	■ Structure
⊕ Incident Command Post	⊕ Completed Dozer Line	■ Structure - No Protection
⊕ Boat Launch	⊕ Proposed Dozer Line	■ Structure Protection Areas
⊕ Division Break	■ Wildfire Daily Fire Perimeter	■ Fire History < 20 yrs old
	★ Towns	■ Townships
	— Constructed	□ Sections
	— Railroad	

