

**SHOVEL CREEK FIRE
AK-FAS-911319
OPS Map**

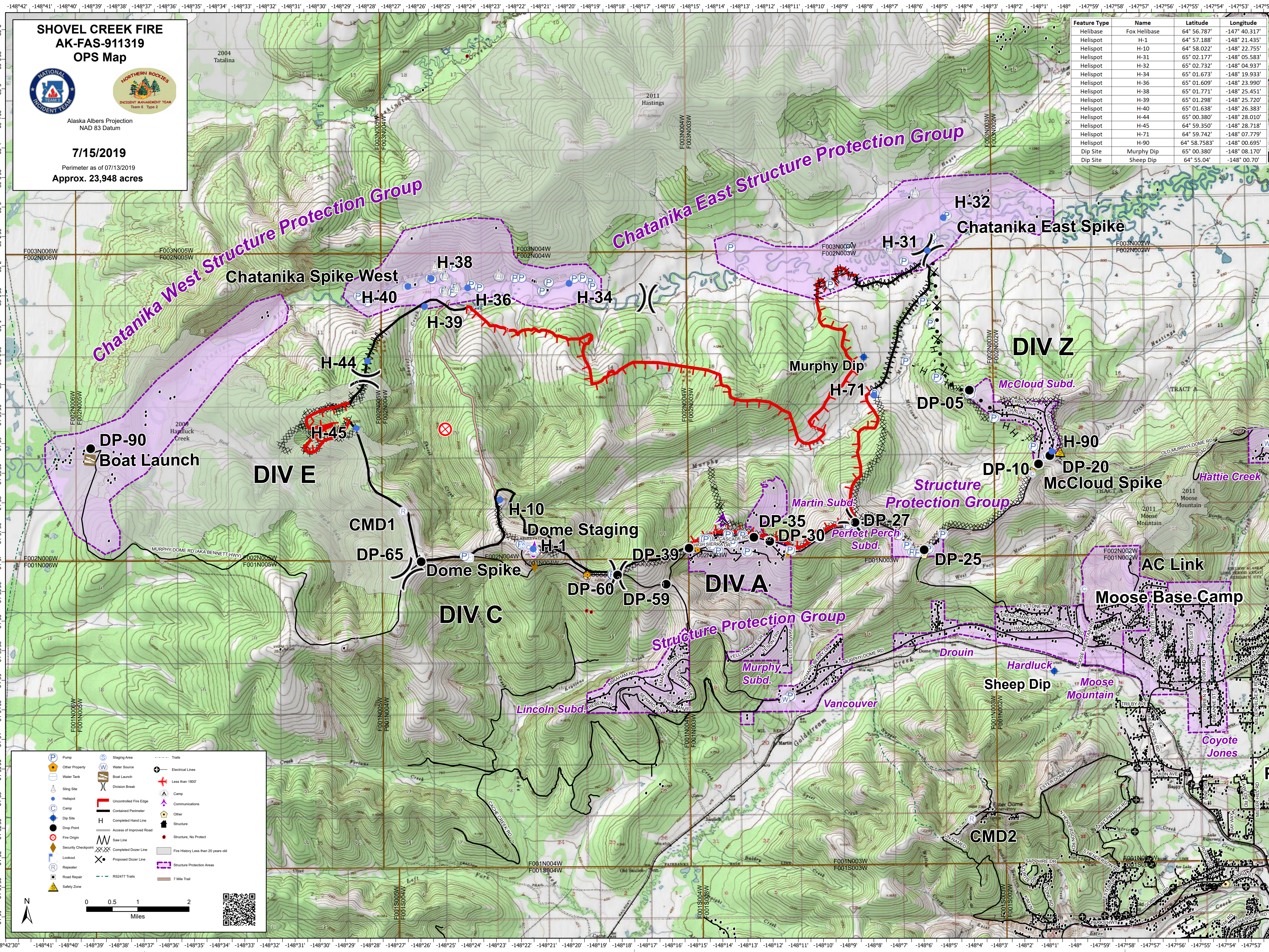


Alaska Albers Projection
NAD 83 Datum

7/15/2019

Perimeter as of 07/13/2019
Approx. 23,948 acres

Feature Type	Name	Latitude	Longitude
Helibase	Fox Helibase	64° 56.787'	-147° 40.317'
Helispot	H-1	64° 57.188'	-148° 21.435'
Helispot	H-10	64° 58.022'	-148° 22.755'
Helispot	H-31	65° 02.177'	-148° 05.583'
Helispot	H-32	65° 02.732'	-148° 04.937'
Helispot	H-34	65° 01.673'	-148° 19.933'
Helispot	H-36	65° 01.609'	-148° 23.990'
Helispot	H-38	65° 01.771'	-148° 25.451'
Helispot	H-39	65° 01.298'	-148° 25.720'
Helispot	H-40	65° 01.638'	-148° 26.383'
Helispot	H-44	65° 00.380'	-148° 28.010'
Helispot	H-45	64° 59.350'	-148° 28.718'
Helispot	H-71	64° 59.742'	-148° 07.779'
Helispot	H-90	64° 58.7583'	-148° 00.695'
Dip Site	Murphy Dip	65° 00.380'	-148° 08.170'
Dip Site	Sheep Dip	64° 55.04'	-148° 00.70'



Pump	Staging Area	Trails
Other Property	Water Source	Electrical Lines
Water Tank	Boat Launch	Less than 1500'
Sling Site	Division Break	Camp
Helispot	Uncontrolled Fire Edge	Communications
Camp	Contained Perimeter	Other
Dip Site	Completed Hand Line	Structure
Drop Point	Access of Improved Road	Structure, No Protect
Fire Origin	Saw Line	Fire History Less than 20 years old
Security Checkpoint	Completed Dozer Line	Structure Protection Areas
Lookout	Proposed Dozer Line	
Repeater	RS2477 Trails	
Road Repair	7 Mile Trail	
Safety Zone		

0 0.5 1 2 Miles