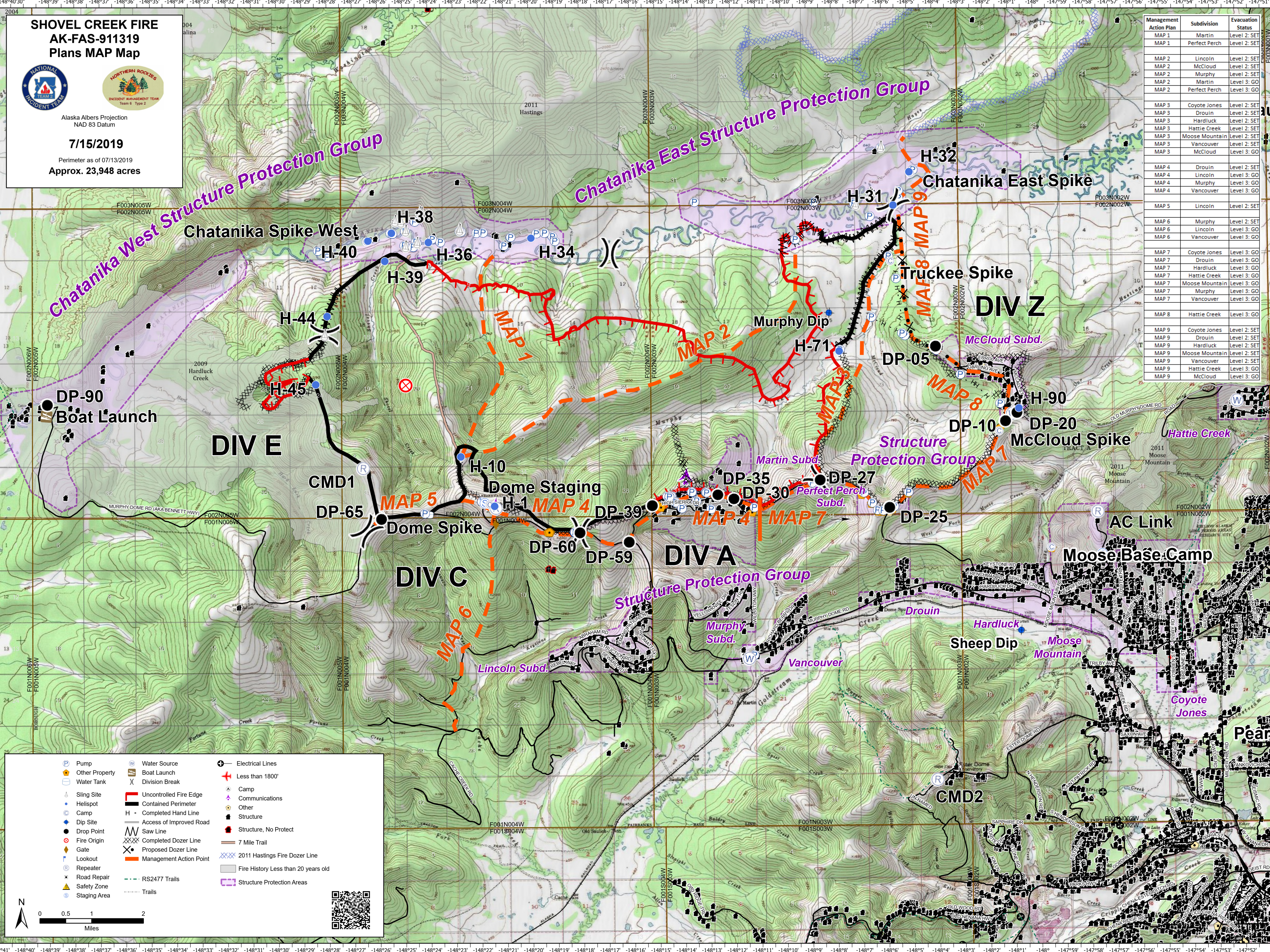


SHOVEL CREEK FIRE AK-FAS-911319 Plans MAP Map



Alaska Albers Projection
NAD 83 Datum
7/15/2019
Perimeter as of 07/13/2019
Approx. 23,948 acres

Management Action Plan	Subdivision	Evacuation Status
MAP 1	Martin	Level 2: SET
MAP 1	Perfect Perch	Level 2: SET
MAP 2	Lincoln	Level 2: SET
MAP 2	McCloud	Level 2: SET
MAP 2	Murphy	Level 2: SET
MAP 2	Martin	Level 2: SET
MAP 2	Perfect Perch	Level 3: GO
MAP 3	Coyote Jones	Level 2: SET
MAP 3	Drouin	Level 2: SET
MAP 3	Hardluck	Level 2: SET
MAP 3	Hattie Creek	Level 2: SET
MAP 3	Moose Mountain	Level 2: SET
MAP 3	Vancouver	Level 2: SET
MAP 3	McCloud	Level 3: GO
MAP 4	Drouin	Level 2: SET
MAP 4	Lincoln	Level 3: GO
MAP 4	Murphy	Level 3: GO
MAP 4	Vancouver	Level 3: GO
MAP 5	Lincoln	Level 2: SET
MAP 6	Murphy	Level 2: SET
MAP 6	Lincoln	Level 3: GO
MAP 6	Vancouver	Level 3: GO
MAP 7	Coyote Jones	Level 3: GO
MAP 7	Drouin	Level 3: GO
MAP 7	Hardluck	Level 3: GO
MAP 7	Hattie Creek	Level 3: GO
MAP 7	Moose Mountain	Level 3: GO
MAP 7	Murphy	Level 3: GO
MAP 7	Vancouver	Level 3: GO
MAP 8	Hattie Creek	Level 3: GO
MAP 9	Coyote Jones	Level 2: SET
MAP 9	Drouin	Level 2: SET
MAP 9	Hardluck	Level 2: SET
MAP 9	Moose Mountain	Level 2: SET
MAP 9	Vancouver	Level 2: SET
MAP 9	Hattie Creek	Level 3: GO
MAP 9	McCloud	Level 3: GO



Pump	Water Source	Electrical Lines
Other Property	Boat Launch	Less than 1800'
Water Tank	Division Break	Camp
Sling Site	Uncontrolled Fire Edge	Communications
Helispot	Contained Perimeter	Other
Camp	H - Completed Hand Line	Structure
Dip Site	Access of Improved Road	Structure, No Protect
Drop Point	Saw Line	7 Mile Trail
Fire Origin	Completed Dozer Line	2011 Hastings Fire Dozer Line
Gate	Proposed Dozer Line	Fire History Less than 20 years old
Lookout	Management Action Point	Structure Protection Areas
Repeater	RS2477 Trails	
Road Repair	Trails	
Safety Zone		
Staging Area		

