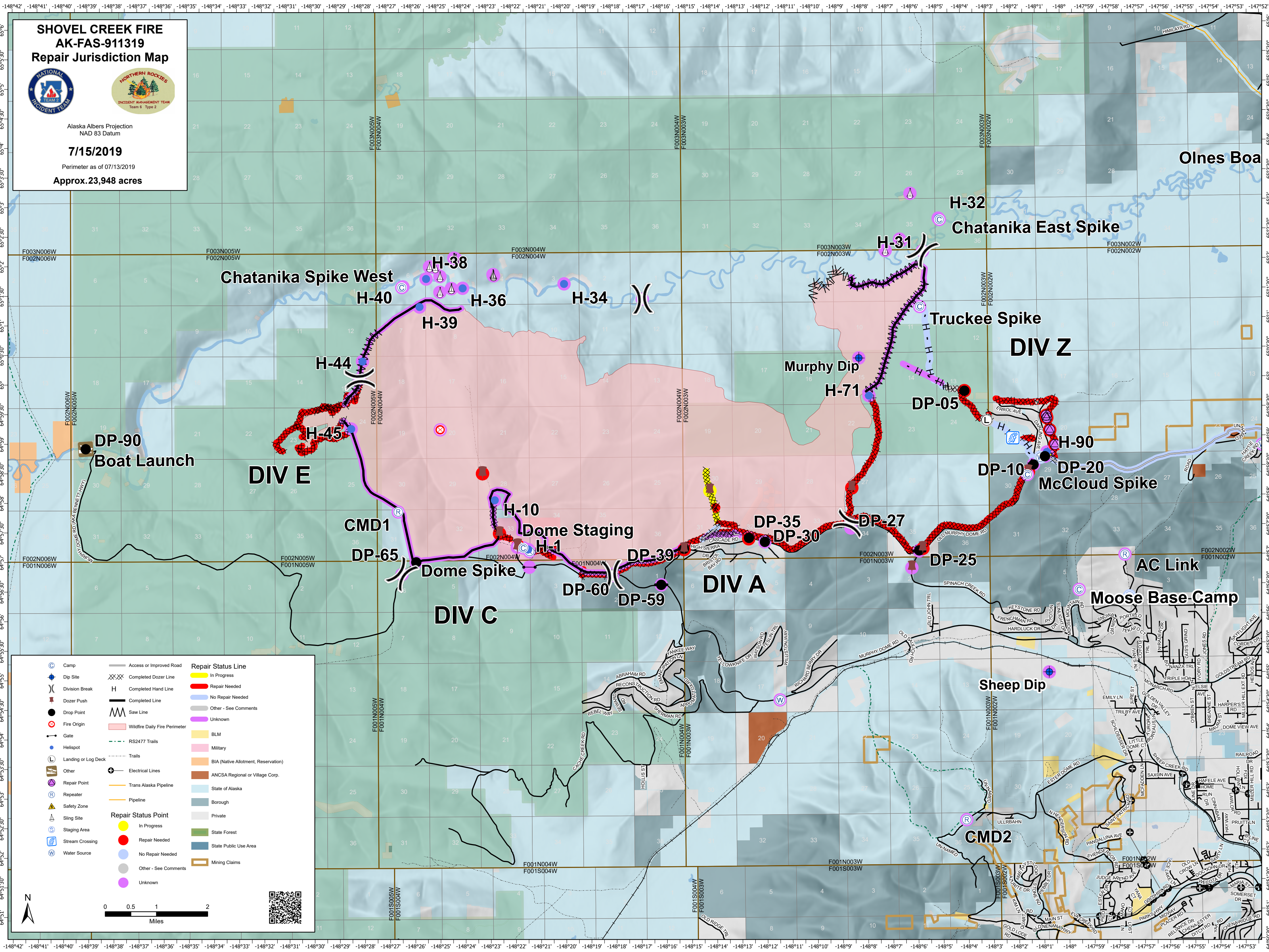


SHOVEL CREEK FIRE
AK-FAS-911319
Repair Jurisdiction Map





Alaska Albers Projection
 NAD 83 Datum

7/15/2019
 Perimeter as of 07/13/2019
Approx. 23,948 acres



	Camp		Access or Improved Road		Repair Status Line
	Dip Site		Completed Dozer Line		Repair Needed
	Division Break		Completed Hand Line		No Repair Needed
	Dozer Push		Saw Line		Other - See Comments
	Drop Point		Wildfire Daily Fire Perimeter		Unknown
	Fire Origin		RS2477 Trails		BLM
	Gate		Trails		Military
	Helispot		Electrical Lines		BIA (Native Allotment, Reservation)
	Landing or Log Deck		Trans Alaska Pipeline		ANCSA Regional or Village Corp.
	Other		Pipeline		State of Alaska
	Repeater		Repair Status Point		Borough
	Safety Zone		Repair Needed		Private
	Sling Site		No Repair Needed		State Forest
	Staging Area		Other - See Comments		State Public Use Area
	Stream Crossing		Unknown		Mining Claims
	Water Source				

0 0.5 1 2 Miles



Olnes Boa

H-32
 Chatanika East Spike

Chatanika Spike West

Truckee Spike
 DIV Z

DIV E

Murphy Dip
 H-71

DIV A

DP-10
 McCloud Spike

CMD1

Dome Staging

AC Link
 Moose Base-Camp

DIV C

Sheep Dip

CMD2