

**SHOVEL CREEK FIRE
AK-FAS-911319
OPS Map - No Structures**

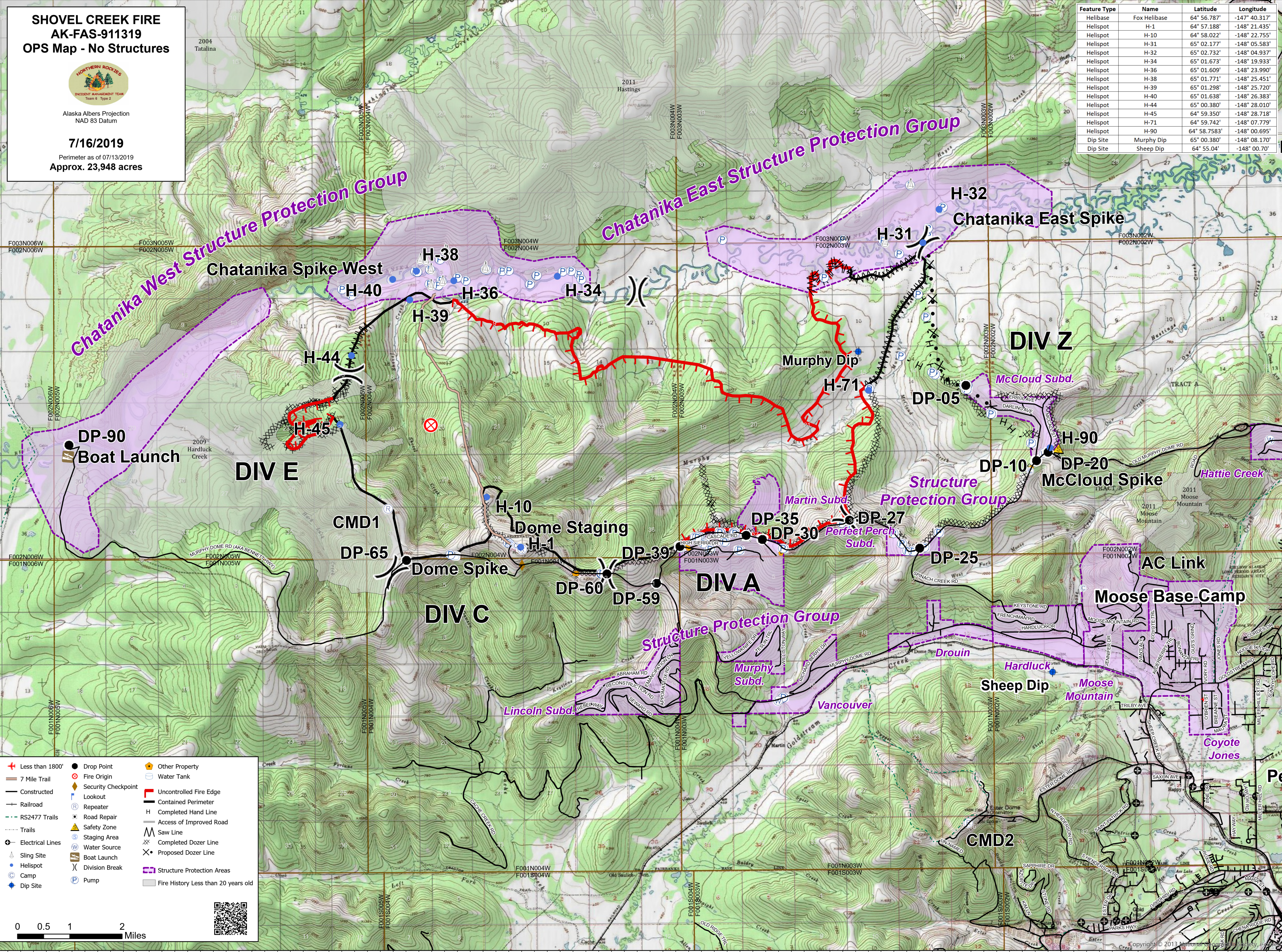


Alaska Albers Projection
NAD 83 Datum

7/16/2019

Perimeter as of 07/13/2019
Approx. 23,948 acres

Feature Type	Name	Latitude	Longitude
Helibase	Fox Helibase	64° 56.787'	-147° 40.317'
Helispot	H-1	64° 57.188'	-148° 21.435'
Helispot	H-10	64° 58.022'	-148° 22.755'
Helispot	H-31	65° 02.177'	-148° 05.583'
Helispot	H-32	65° 02.732'	-148° 04.937'
Helispot	H-34	65° 01.673'	-148° 19.933'
Helispot	H-36	65° 01.609'	-148° 23.990'
Helispot	H-38	65° 01.771'	-148° 25.451'
Helispot	H-39	65° 01.298'	-148° 25.720'
Helispot	H-40	65° 01.638'	-148° 26.383'
Helispot	H-44	65° 00.380'	-148° 28.010'
Helispot	H-45	64° 59.350'	-148° 28.718'
Helispot	H-71	64° 59.742'	-148° 07.779'
Helispot	H-90	64° 58.7583'	-148° 00.695'
Dip Site	Murphy Dip	65° 00.380'	-148° 08.170'
Dip Site	Sheep Dip	64° 55.04'	-148° 00.70'



- + Less than 1800'
- Drop Point
- Fire Origin
- ◆ Security Checkpoint
- Uncontrolled Fire Edge
- Contained Perimeter
- Completed Hand Line
- Access of Improved Road
- Saw Line
- Completed Dozer Line
- Proposed Dozer Line
- Structure Protection Areas
- Fire History Less than 20 years old
- Other Property
- Water Tank
- 7 Mile Trail
- Constructed
- Railroad
- RS2477 Trails
- Trails
- Electrical Lines
- Sling Site
- Helispot
- Camp
- Dip Site
- Lookout
- Repeater
- Road Repair
- Safety Zone
- Staging Area
- Water Source
- Boat Launch
- Division Break
- Pump

