

**SHOVEL CREEK FIRE
AK-FAS-911319
Plans MAP Map**

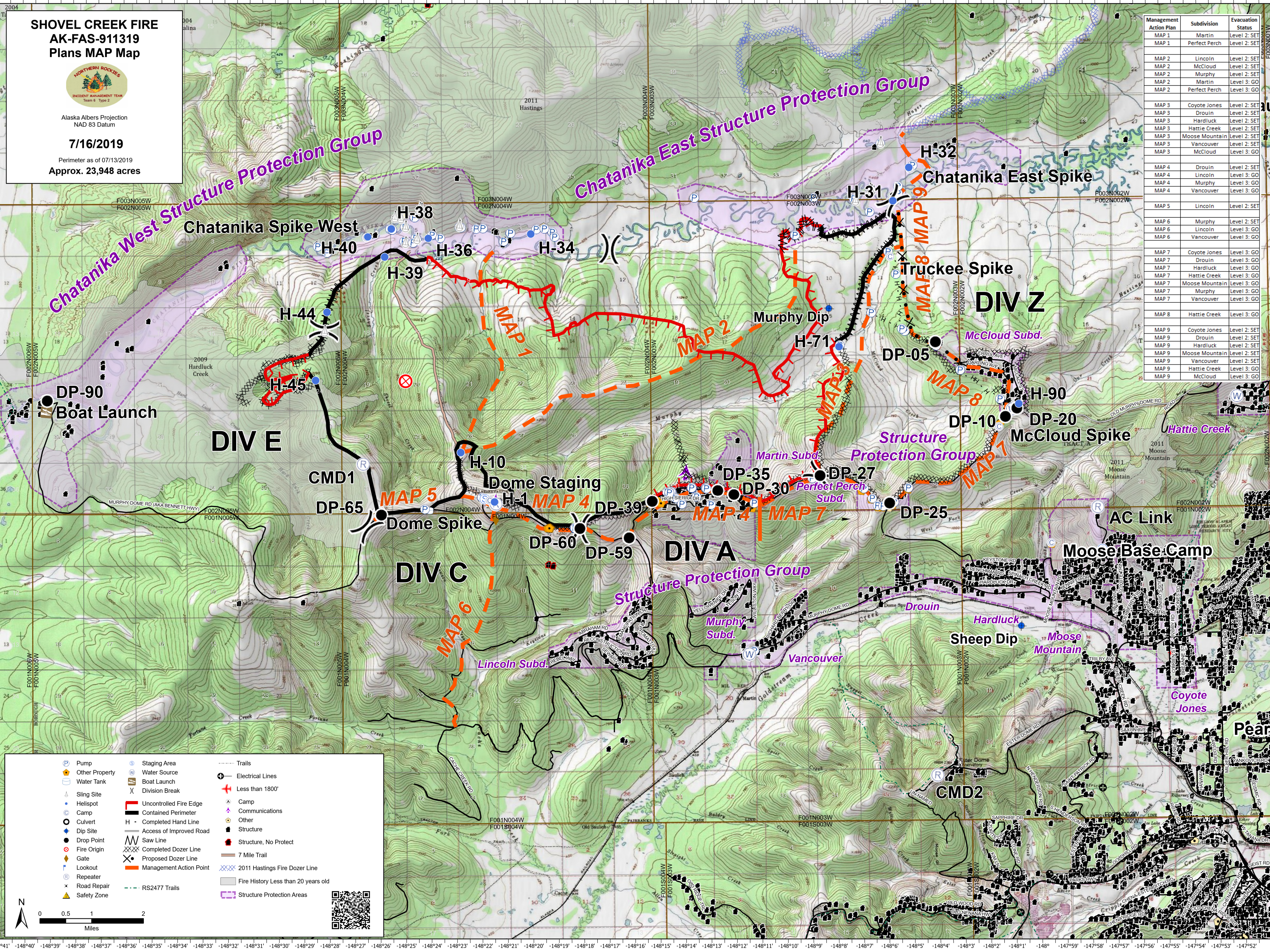


Alaska Albers Projection
NAD 83 Datum

7/16/2019

Perimeter as of 07/13/2019
Approx. 23,948 acres

| Management Action Plan | Subdivision | Evacuation Status |
|------------------------|----------------|-------------------|
| MAP 1 | Martin | Level 2: SET |
| MAP 1 | Perfect Perch | Level 2: SET |
| MAP 2 | Lincoln | Level 2: SET |
| MAP 2 | McCloud | Level 2: SET |
| MAP 2 | Murphy | Level 2: SET |
| MAP 2 | Martin | Level 3: SET |
| MAP 2 | Perfect Perch | Level 3: GO |
| MAP 3 | Coyote Jones | Level 2: SET |
| MAP 3 | Drouin | Level 2: SET |
| MAP 3 | Hardluck | Level 2: SET |
| MAP 3 | Hattie Creek | Level 2: SET |
| MAP 3 | Moose Mountain | Level 2: SET |
| MAP 3 | Vancouver | Level 2: SET |
| MAP 3 | McCloud | Level 3: GO |
| MAP 4 | Drouin | Level 2: SET |
| MAP 4 | Lincoln | Level 3: GO |
| MAP 4 | Murphy | Level 3: GO |
| MAP 4 | Vancouver | Level 3: GO |
| MAP 5 | Lincoln | Level 2: SET |
| MAP 6 | Murphy | Level 2: SET |
| MAP 6 | Lincoln | Level 3: GO |
| MAP 6 | Vancouver | Level 3: GO |
| MAP 7 | Coyote Jones | Level 3: GO |
| MAP 7 | Drouin | Level 3: GO |
| MAP 7 | Hardluck | Level 3: GO |
| MAP 7 | Hattie Creek | Level 3: GO |
| MAP 7 | Moose Mountain | Level 3: GO |
| MAP 7 | Murphy | Level 3: GO |
| MAP 7 | Vancouver | Level 3: GO |
| MAP 8 | Hattie Creek | Level 3: GO |
| MAP 9 | Coyote Jones | Level 2: SET |
| MAP 9 | Drouin | Level 2: SET |
| MAP 9 | Hardluck | Level 2: SET |
| MAP 9 | Moose Mountain | Level 2: SET |
| MAP 9 | Vancouver | Level 2: SET |
| MAP 9 | Hattie Creek | Level 3: GO |
| MAP 9 | McCloud | Level 3: GO |



| | | |
|--|--|--|
| | | |
| | | |
| | | |
| | | |
| | | |
| | | |
| | | |
| | | |
| | | |
| | | |
| | | |
| | | |
| | | |
| | | |
| | | |

