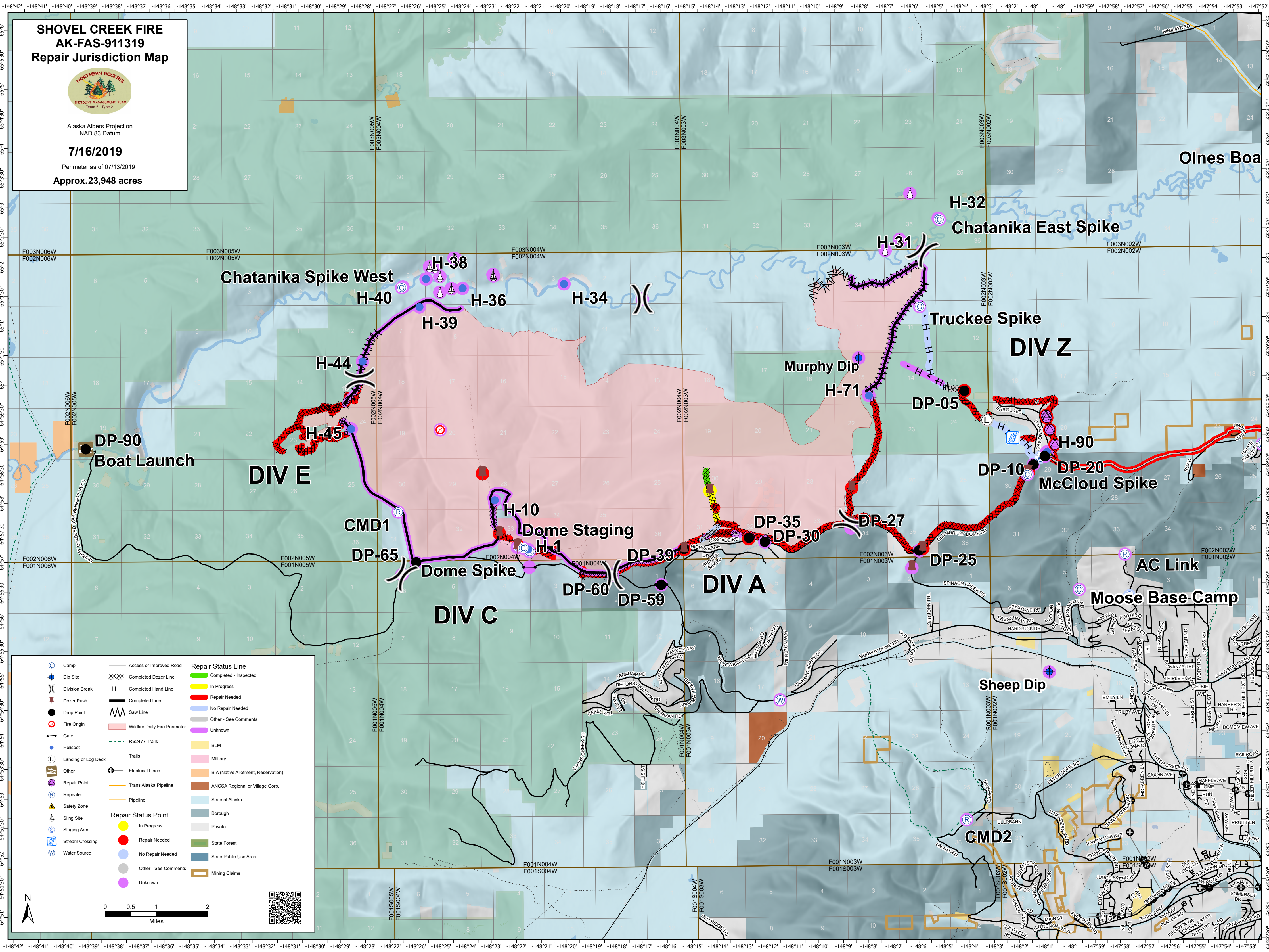


**SHOVEL CREEK FIRE
AK-FAS-911319
Repair Jurisdiction Map**




Alaska Albers Projection
NAD 83 Datum

7/16/2019
Perimeter as of 07/13/2019
Approx. 23,948 acres



	Camp		Access or Improved Road		Repair Status Line
	Dip Site		Completed Dozer Line		In Progress
	Division Break		Completed Hand Line		Repair Needed
	Dozer Push		Completed Line		No Repair Needed
	Drop Point		Saw Line		Other - See Comments
	Fire Origin		Wildfire Daily Fire Perimeter		Unknown
	Gate		RS2477 Trails		Repair Status Point
	Helispot		Trails		Repair Needed
	Landing or Log Deck		Electrical Lines		No Repair Needed
	Other		Trans Alaska Pipeline		Other - See Comments
	Repeater		Pipeline		Unknown
	Safety Zone		BLM		
	Sling Site		Military		
	Staging Area		BIA (Native Allotment, Reservation)		
	Stream Crossing		ANCSA Regional or Village Corp.		
	Water Source		State of Alaska		
			Borough		
			Private		
			State Forest		
			State Public Use Area		
			Mining Claims		

0 0.5 1 2 Miles



Olnes Boa

H-32
Chatanika East Spike

Chatanika Spike West

Truckee Spike
DIV Z

DP-90
Boat Launch

DIV E

Murphy Dip
H-71

DP-05

H-90
DP-10 DP-20
McCloud Spike

CMD1
DP-65
Dome Spike

DIV C

DIV A

H-10
Dome Staging
H-1

DP-35 DP-30
DP-39 DP-27

DP-25

AC Link
Moose Base-Camp

Sheep Dip

CMD2