

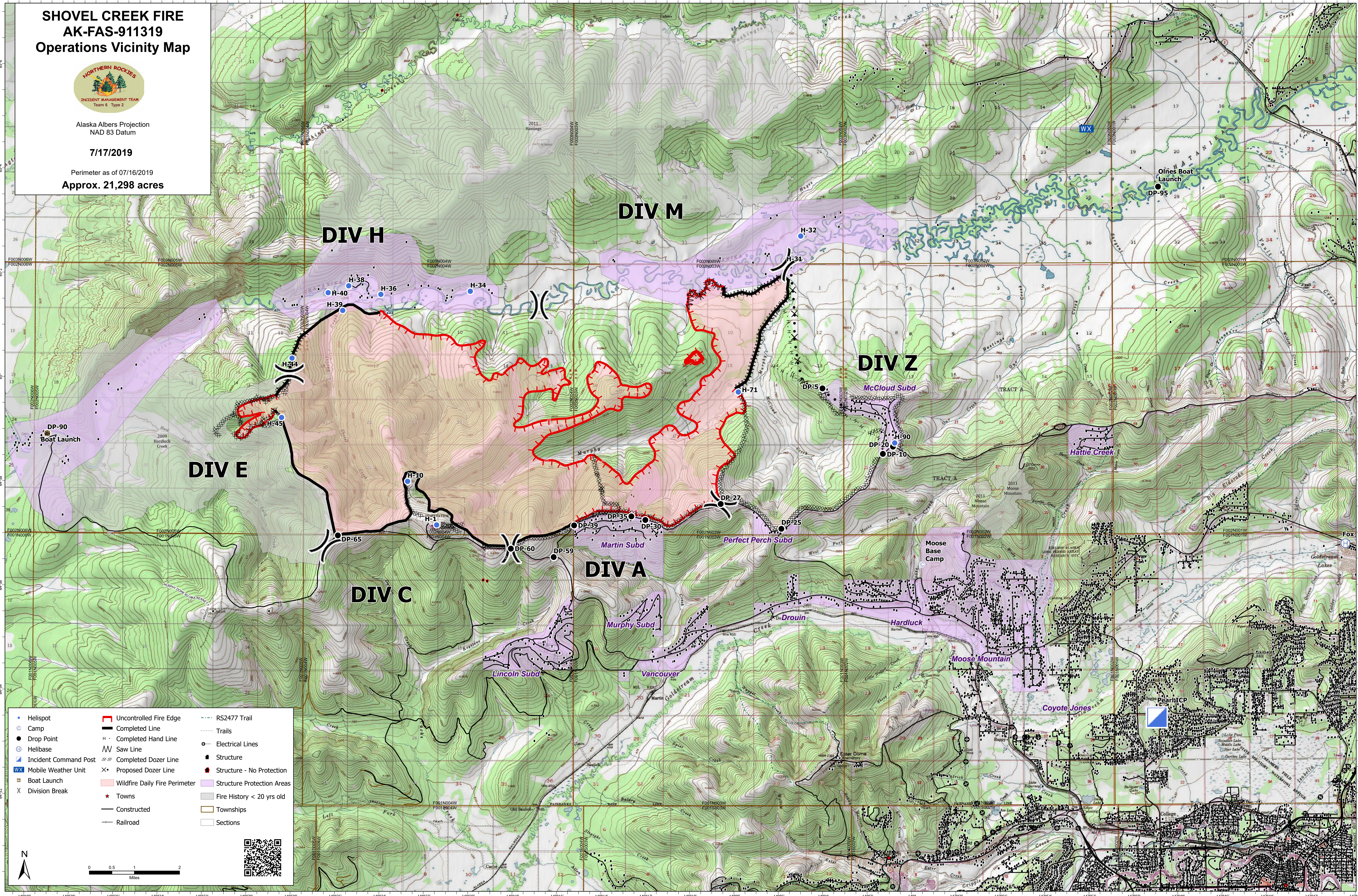
SHOVEL CREEK FIRE AK-FAS-911319 Operations Vicinity Map



Alaska Albers Projection
NAD 83 Datum

7/17/2019

Perimeter as of 07/16/2019
Approx. 21,298 acres



- | | | |
|-------------------------|---------------------------------|------------------------------|
| • Helispot | ■ Uncontrolled Fire Edge | --- RS2477 Trail |
| ● Camp | — Completed Line | --- Trails |
| ○ Helibase | H — Completed Hand Line | — Electrical Lines |
| ⊕ Incident Command Post | ∩ Saw Line | ■ Structure |
| WX Mobile Weather Unit | ∩∩ Completed Dozer Line | ■ Structure - No Protection |
| ⊠ Boat Launch | × Proposed Dozer Line | ■ Structure Protection Areas |
| X Division Break | ■ Wildfire Daily Fire Perimeter | ■ Fire History < 20 yrs old |
| | ★ Towns | ■ Townships |
| | — Constructed | □ Sections |
| | — Railroad | |

N

0 0.5 1 2
Miles