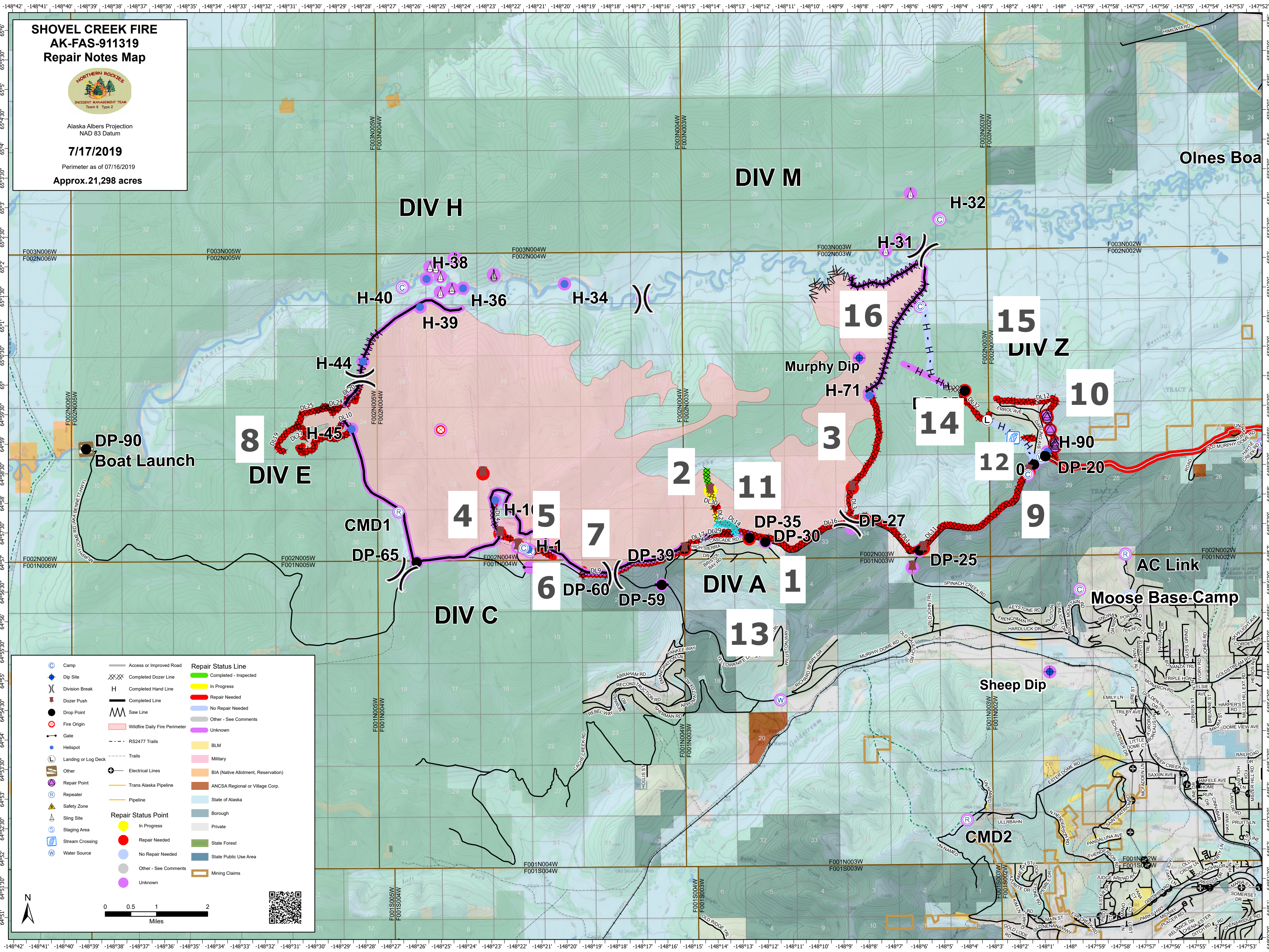


**SHOVEL CREEK FIRE
AK-FAS-911319
Repair Notes Map**




Alaska Albers Projection
NAD 83 Datum

7/17/2019
Perimeter as of 07/16/2019
Approx. 21,298 acres



	Camp		Repair Status Line
	Dip Site		Completed - Inspected
	Division Break		In Progress
	Dozer Push		No Repair Needed
	Drop Point		Other - See Comments
	Fire Origin		Wildfire Daily Fire Perimeter
	Gate		Unknown
	Helispot		BLM
	Landing or Log Deck		Military
	Other		BIA (Native Allotment, Reservation)
	Repeater		State of Alaska
	Safety Zone		State Forest
	Sling Site		Private
	Staging Area		State Public Use Area
	Stream Crossing		Other - See Comments
	Water Source		Mining Claims
			Repair Status Point
			In Progress
			Repair Needed
			No Repair Needed
			Other - See Comments
			Unknown

0 0.5 1 2 Miles



Olnes Boa

DIV M

DIV H

H-32

16

15
DIV Z

10

8
DIV E

4

2

11

3

14

12

H-90

CMD1

H-1

7

5

DIV A

1

DP-65

H-1

6

DP-39

DP-35

DP-30

DP-27

DP-25

AC Link

Moose Base Camp

Sheep Dip

CMD2

F001N004W
F001S004W

F001N003W
F001S003W

F001N002W
F001S002W

F001N001W
F001S001W

F001N000W
F001S000W

F001N005W
F001S005W

F002N004W
F002S004W

F002N003W
F002S003W

F002N002W
F002S002W

F002N001W
F002S001W

F002N000W
F002S000W

