

**SHOVEL CREEK FIRE
AK-FAS-911319
OPS Map**



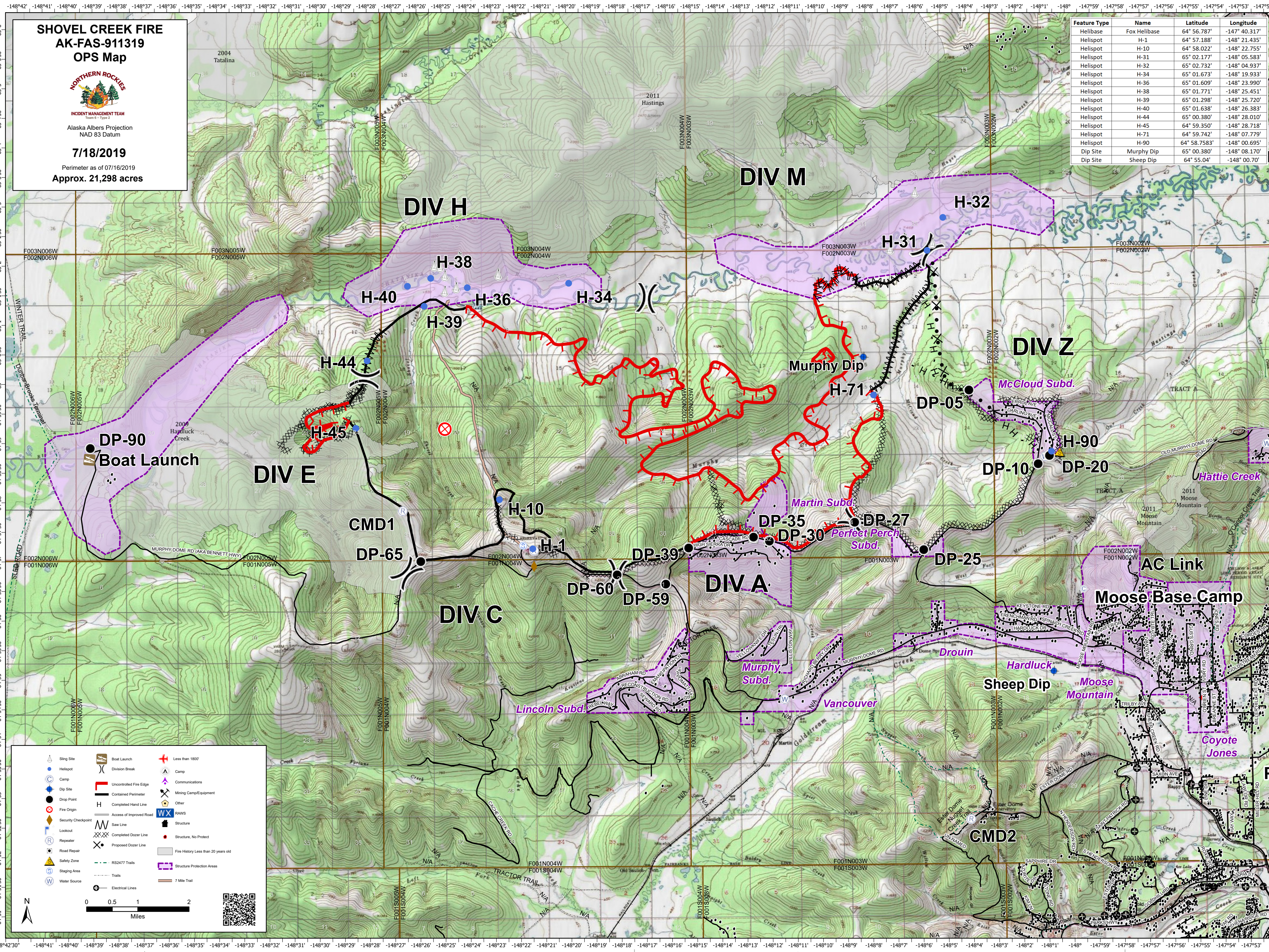
INCIDENT MANAGEMENT TEAM
Team 6 - Type 2

Alaska Albers Projection
NAD 83 Datum

7/18/2019

Perimeter as of 07/16/2019
Approx. 21,298 acres

Feature Type	Name	Latitude	Longitude
Helibase	Fox Helibase	64° 56.787'	-147° 40.317'
Helispot	H-1	64° 57.188'	-148° 21.435'
Helispot	H-10	64° 58.022'	-148° 22.755'
Helispot	H-31	65° 02.177'	-148° 05.583'
Helispot	H-32	65° 02.732'	-148° 04.937'
Helispot	H-34	65° 01.673'	-148° 19.933'
Helispot	H-36	65° 01.609'	-148° 23.990'
Helispot	H-38	65° 01.771'	-148° 25.451'
Helispot	H-39	65° 01.298'	-148° 25.720'
Helispot	H-40	65° 01.638'	-148° 26.383'
Helispot	H-44	65° 00.380'	-148° 28.010'
Helispot	H-45	64° 59.350'	-148° 28.718'
Helispot	H-71	64° 59.742'	-148° 07.779'
Helispot	H-90	64° 58.7583'	-148° 00.695'
Dip Site	Murphy Dip	65° 00.380'	-148° 08.170'
Dip Site	Sheep Dip	64° 55.04'	-148° 00.70'



0 0.5 1 2 Miles

65°6'0" 65°5'0" 65°4'0" 65°3'0" 65°2'0" 65°1'0" 65°0'0" 64°59'0" 64°58'0" 64°57'0" 64°56'0" 64°55'0" 64°54'0" 64°53'0" 64°52'0" 64°51'0" 64°50'0" 64°49'0" 64°48'0" 64°47'0" 64°46'0" 64°45'0" 64°44'0" 64°43'0" 64°42'0"

-148°42' -148°41' -148°40' -148°39' -148°38' -148°37' -148°36' -148°35' -148°34' -148°33' -148°32' -148°31' -148°30' -148°29' -148°28' -148°27' -148°26' -148°25' -148°24' -148°23' -148°22' -148°21' -148°20' -148°19' -148°18' -148°17' -148°16' -148°15' -148°14' -148°13' -148°12' -148°11' -148°10' -148°9' -148°8' -148°7' -148°6' -148°5' -148°4' -148°3' -148°2' -148°1' -148°0' -147°59' -147°58' -147°57' -147°56' -147°55' -147°54' -147°53' -147°52'