

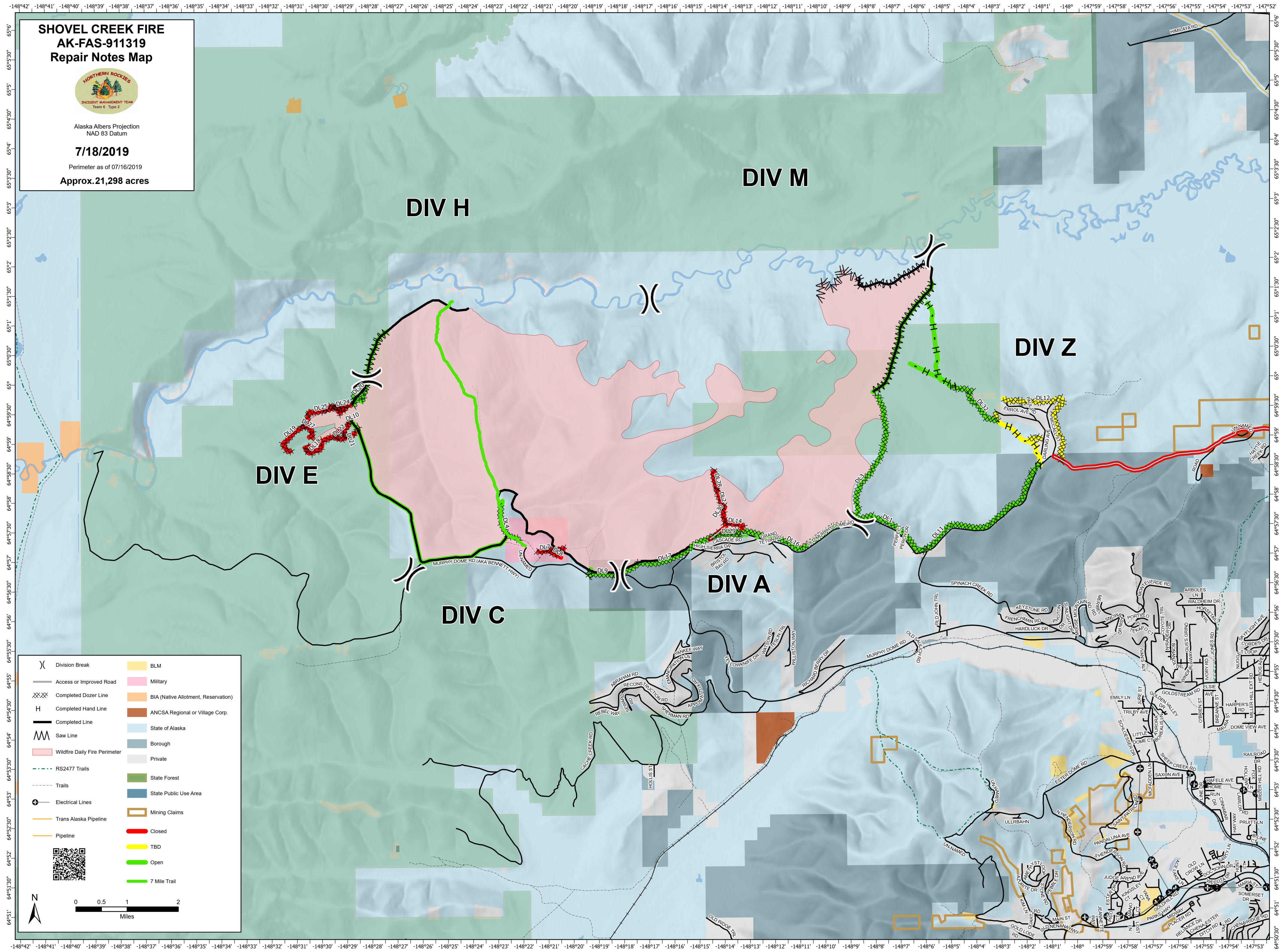
**SHOVEL CREEK FIRE
AK-FAS-911319
Repair Notes Map**



Alaska Albers Projection
NAD 83 Datum

7/18/2019

Perimeter as of 07/16/2019
Approx. 21,298 acres



DIV E

DIV H

DIV M

DIV Z

DIV A

DIV C

	Division Break		BLM
	Access or improved Road		Military
	Completed Dozer Line		BIA (Native Allotment, Reservation)
	Completed Hand Line		ANCSA Regional or Village Corp.
	Completed Line		State of Alaska
	Saw Line		Borough
	Wildfire Daily Fire Perimeter		Private
	RS2477 Trails		State Forest
	Trails		State Public Use Area
	Electrical Lines		Mining Claims
	Trans Alaska Pipeline		Closed
	Pipeline		TBD
			Open
			7 Mile Trail

0 0.5 1 2 Miles