

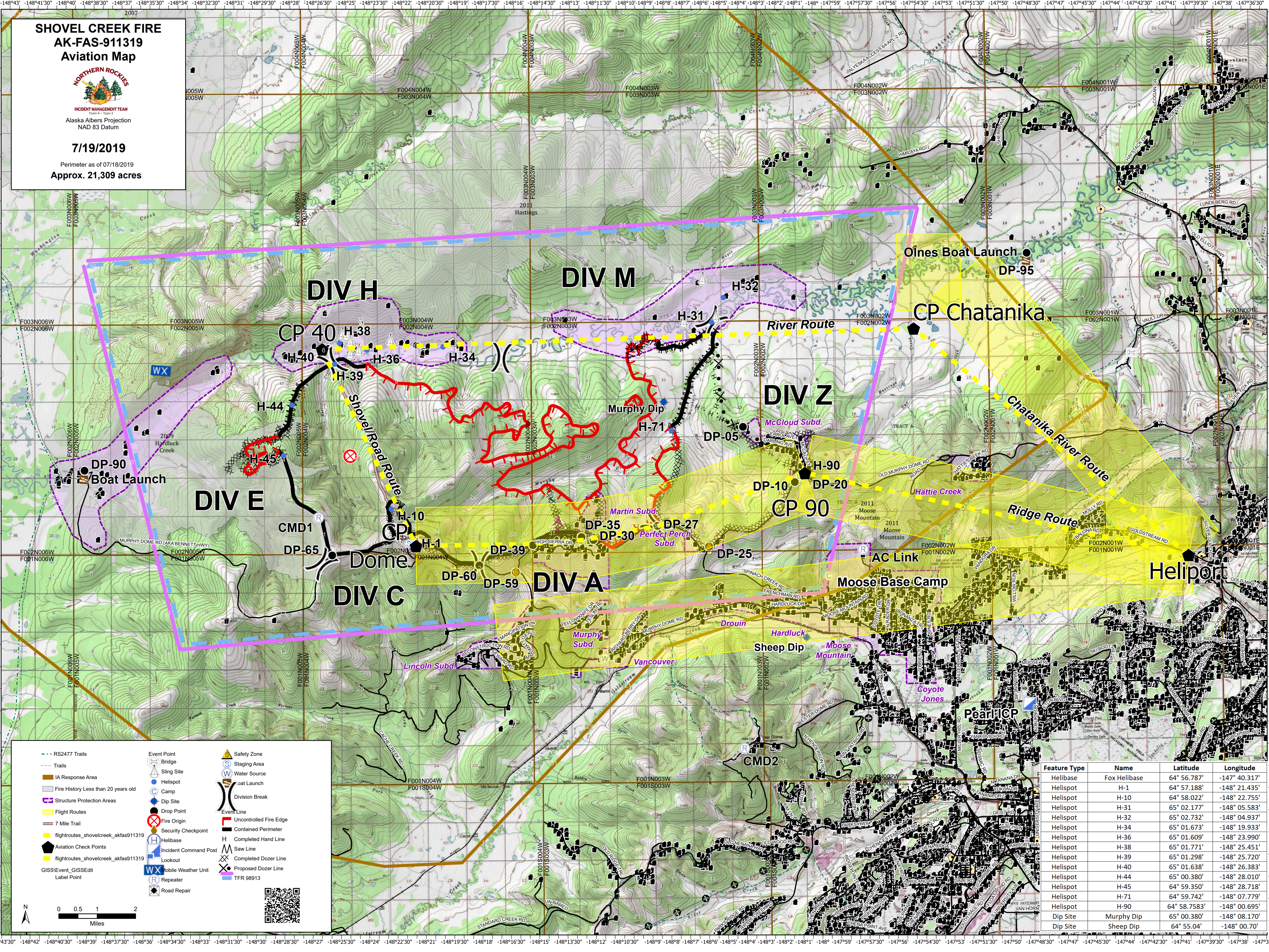
SHOVEL CREEK FIRE
AK-FAS-911319
Aviation Map



INCIDENT MANAGEMENT TEAM
 Team # - Type 2
 Alaska Albers Projection
 NAD 83 Datum

7/19/2019

Perimeter as of 07/18/2019
Approx. 21,309 acres



<ul style="list-style-type: none"> RS2477 Trails Trails IA Response Area Fire History Less than 20 years old Structure Protection Areas Flight Routes 7 Mile Trail flightroutes_shovelcreek_akfas911319 Aviation Check Points flightroutes_shovelcreek_akfas911319 GISS/Event GISS/Edit Label Point 	<ul style="list-style-type: none"> Event Point Bridge Sling Site Helispot Camp Dip Site Drop Point Fire Origin Security Checkpoint Helibase Incident Command Post Lookout Mobile Weather Unit Repeater Road Repair 	<ul style="list-style-type: none"> Safety Zone Staging Area Water Source Boat Launch Division Break Event Line Uncontrolled Fire Edge Contained Perimeter Completed Hand Line Saw Line Completed Dozer Line Proposed Dozer Line TFR 98913
--	---	--

Feature Type	Name	Latitude	Longitude
Helibase	Fox Helibase	64° 56.787'	-147° 40.317'
Helispot	H-1	64° 57.188'	-148° 21.435'
Helispot	H-10	64° 58.022'	-148° 22.755'
Helispot	H-31	65° 02.177'	-148° 05.583'
Helispot	H-32	65° 02.732'	-148° 04.937'
Helispot	H-34	65° 01.673'	-148° 19.933'
Helispot	H-36	65° 01.609'	-148° 23.990'
Helispot	H-38	65° 01.771'	-148° 25.451'
Helispot	H-39	65° 01.298'	-148° 25.720'
Helispot	H-40	65° 01.638'	-148° 26.383'
Helispot	H-44	65° 00.380'	-148° 28.010'
Helispot	H-45	64° 59.350'	-148° 28.718'
Helispot	H-71	64° 59.742'	-148° 07.779'
Helispot	H-90	64° 58.7583'	-148° 00.695'
Dip Site	Murphy Dip	65° 00.380'	-148° 08.170'
Dip Site	Sheep Dip	64° 55.04'	-148° 00.70'