

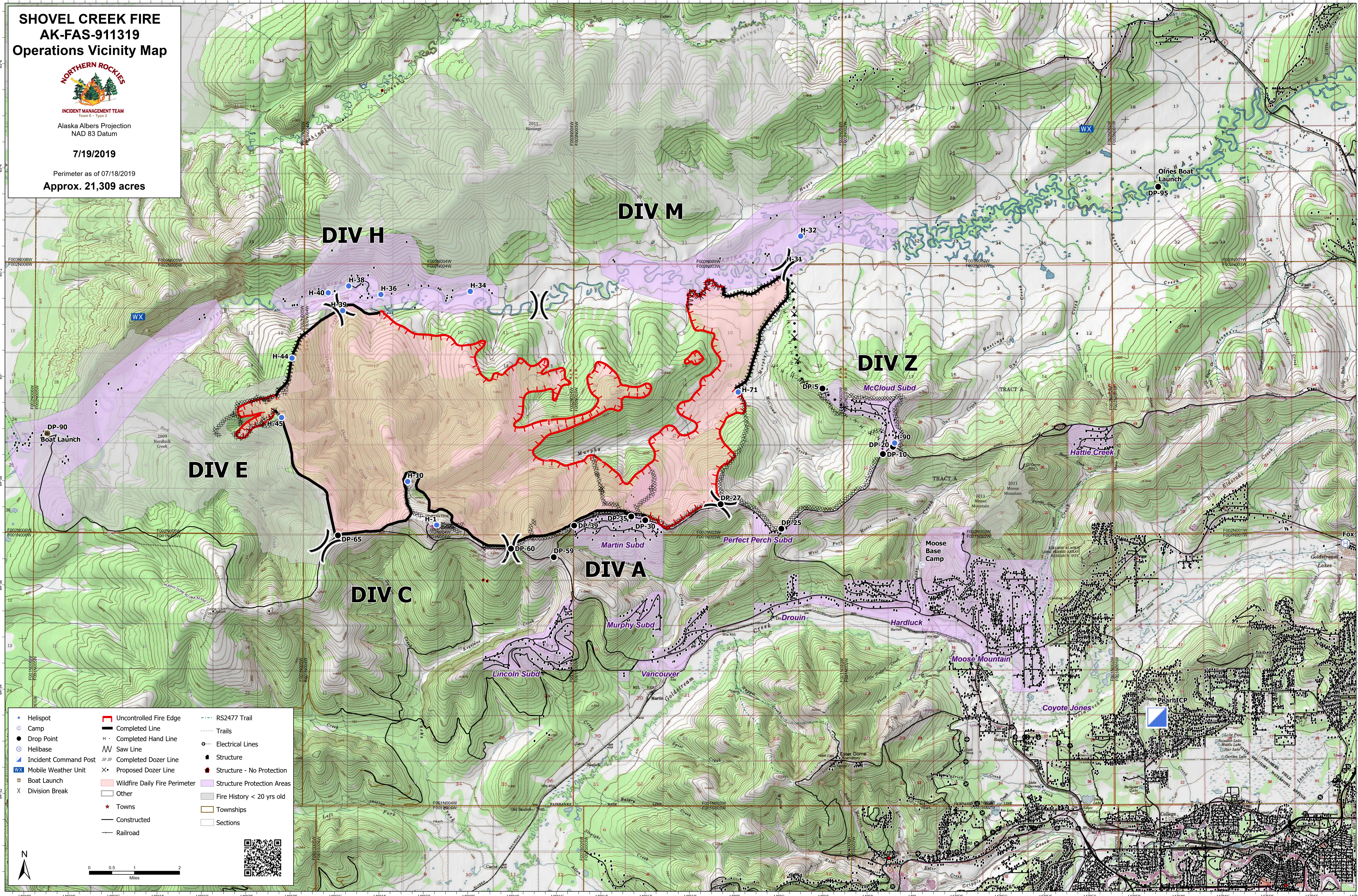
SHOVEL CREEK FIRE AK-FAS-911319 Operations Vicinity Map



INCIDENT MANAGEMENT TEAM
Team 6 - Type 2
Alaska Albers Projection
NAD 83 Datum

7/19/2019

Perimeter as of 07/18/2019
Approx. 21,309 acres



• Helispot	■ Uncontrolled Fire Edge	--- RS2477 Trail
● Camp	— Completed Line	--- Trails
○ Drop Point	H — Completed Hand Line	— Electrical Lines
⊙ Helibase	∩ Saw Line	■ Structure
Ⓜ Incident Command Post	∩∩ Completed Dozer Line	■ Structure - No Protection
WX Mobile Weather Unit	× Proposed Dozer Line	■ Structure Protection Areas
Ⓜ Boat Launch	■ Wildfire Daily Fire Perimeter	■ Fire History < 20 yrs old
X Division Break	□ Other	■ Townships
	★ Towns	□ Sections
	— Constructed	
	— Railroad	

