

**SHOVEL CREEK FIRE  
AK-FAS-911319  
Bulge**



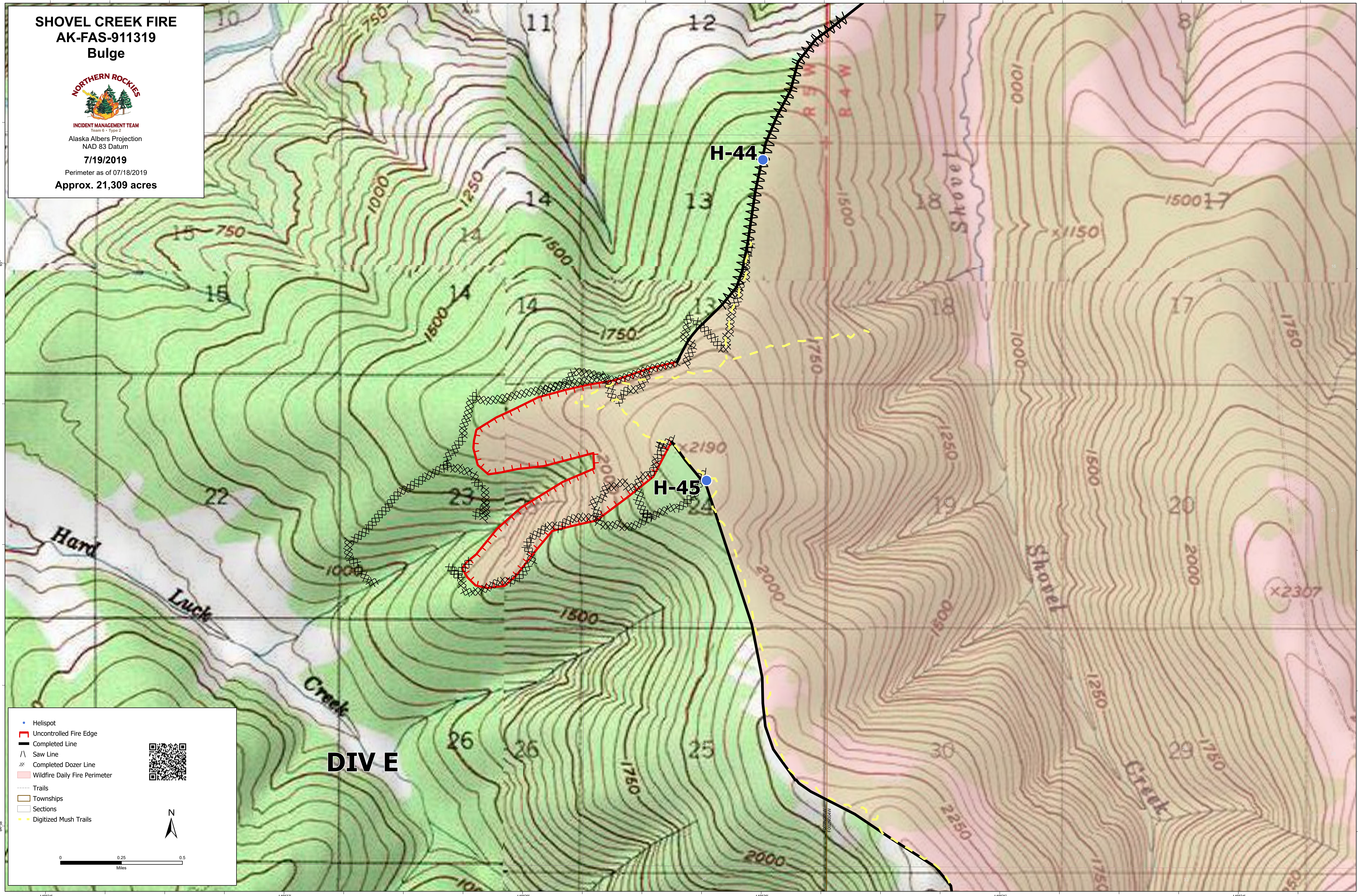
INCIDENT MANAGEMENT TEAM  
Team 6 - Type 2

Alaska Albers Projection  
NAD 83 Datum

7/19/2019

Perimeter as of 07/18/2019

Approx. 21,309 acres



- Helispot
- ▭ Uncontrolled Fire Edge
- ▬ Completed Line
- /\ Saw Line
- ⊗ Completed Dozer Line
- ▭ Wildfire Daily Fire Perimeter
- ⋯ Trails
- ▭ Townships
- ▭ Sections
- ⋯ Digitized Mush Trails

