

**SHOVEL CREEK FIRE
AK-FAS-911319
Plans MAP Map**



INCIDENT MANAGEMENT TEAM
Team 6 - Type 2
Alaska Albers Projection
NAD 83 Datum

7/19/2019

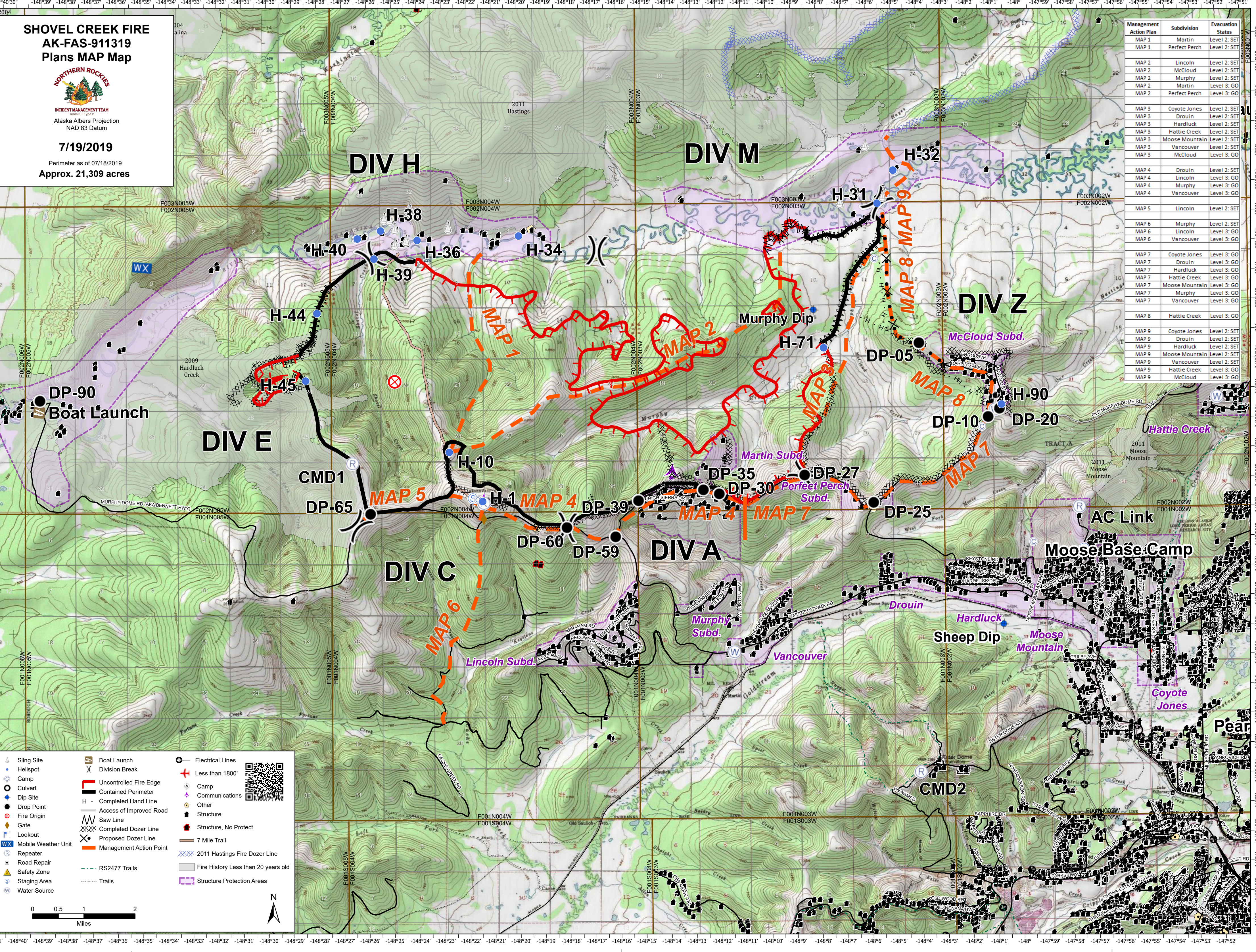
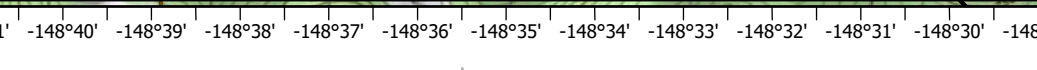
Perimeter as of 07/18/2019
Approx. 21,309 acres

Management Action Plan	Subdivision	Evacuation Status
MAP 1	Martin	Level 2: SET
MAP 1	Perfect Perch	Level 2: SET
MAP 2	Lincoln	Level 2: SET
MAP 2	McCloud	Level 2: SET
MAP 2	Murphy	Level 2: SET
MAP 2	Martin	Level 3: GO
MAP 2	Perfect Perch	Level 3: GO
MAP 3	Coyote Jones	Level 2: SET
MAP 3	Drouin	Level 2: SET
MAP 3	Hardluck	Level 2: SET
MAP 3	Hattie Creek	Level 2: SET
MAP 3	Moose Mountain	Level 2: SET
MAP 3	Vancouver	Level 2: SET
MAP 3	McCloud	Level 3: GO
MAP 4	Drouin	Level 2: SET
MAP 4	Lincoln	Level 3: GO
MAP 4	Murphy	Level 3: GO
MAP 4	Vancouver	Level 3: GO
MAP 5	Lincoln	Level 2: SET
MAP 6	Murphy	Level 2: SET
MAP 6	Lincoln	Level 3: GO
MAP 6	Vancouver	Level 3: GO
MAP 7	Coyote Jones	Level 3: GO
MAP 7	Drouin	Level 3: GO
MAP 7	Hardluck	Level 3: GO
MAP 7	Hattie Creek	Level 3: GO
MAP 7	Moose Mountain	Level 3: GO
MAP 7	Murphy	Level 3: GO
MAP 7	Vancouver	Level 3: GO
MAP 8	Hattie Creek	Level 3: GO
MAP 9	Coyote Jones	Level 2: SET
MAP 9	Drouin	Level 2: SET
MAP 9	Hardluck	Level 2: SET
MAP 9	Moose Mountain	Level 2: SET
MAP 9	Vancouver	Level 2: SET
MAP 9	Hattie Creek	Level 3: GO
MAP 9	McCloud	Level 3: GO

- Sling Site
- Helispot
- Camp
- Culvert
- Dip Site
- Drop Point
- Fire Origin
- Gate
- Lookout
- Mobile Weather Unit
- Repeater
- Road Repair
- Safety Zone
- Staging Area
- Water Source

- Boat Launch
- Division Break
- Uncontrolled Fire Edge
- Contained Perimeter
- Completed Hand Line
- Access of Improved Road
- Saw Line
- Completed Dozer Line
- Proposed Dozer Line
- Management Action Point

- Electrical Lines
- Less than 1800'
- Camp
- Communications
- Other
- Structure
- Structure, No Protect
- 7 Mile Trail
- 2011 Hastings Fire Dozer Line
- Fire History Less than 20 years old
- Structure Protection Areas



-148°41' -148°40' -148°39' -148°38' -148°37' -148°36' -148°35' -148°34' -148°33' -148°32' -148°31' -148°30' -148°29' -148°28' -148°27' -148°26' -148°25' -148°24' -148°23' -148°22' -148°21' -148°20' -148°19' -148°18' -148°17' -148°16' -148°15' -148°14' -148°13' -148°12' -148°11' -148°10' -148°9' -148°8' -148°7' -148°6' -148°5' -148°4' -148°3' -148°2' -148°1' -148°0'

64°50' 64°51' 64°52' 64°53' 64°54' 64°55' 64°56' 64°57' 64°58' 64°59' 65°00' 65°01' 65°02' 65°03' 65°04' 65°05' 65°06' 65°07' 65°08' 65°09' 65°10' 65°11' 65°12' 65°13' 65°14' 65°15' 65°16' 65°17' 65°18' 65°19' 65°20' 65°21' 65°22' 65°23' 65°24' 65°25' 65°26' 65°27' 65°28' 65°29' 65°30'