

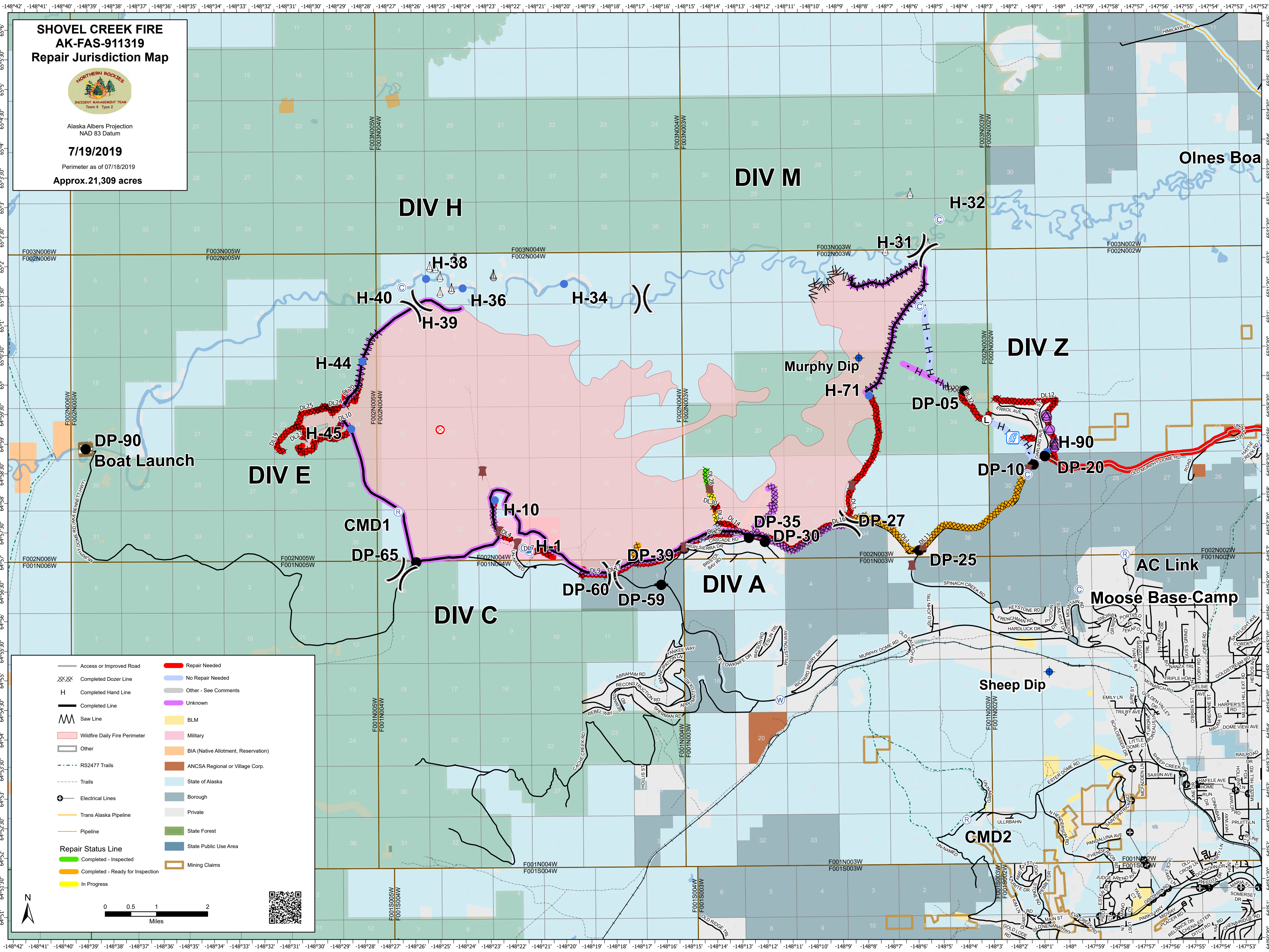
SHOVEL CREEK FIRE AK-FAS-911319 Repair Jurisdiction Map



Alaska Albers Projection
NAD 83 Datum

7/19/2019

Perimeter as of 07/18/2019
Approx. 21,309 acres



	Access or Improved Road		Repair Needed
	Completed Dozer Line		No Repair Needed
	Completed Hand Line		Other - See Comments
	Completed Line		Unknown
	Saw Line		BLM
	Wildfire Daily Fire Perimeter		Military
	Other		BIA (Native Allotment, Reservation)
	RS2477 Trails		ANCSA Regional or Village Corp.
	Trails		State of Alaska
	Electrical Lines		Borough
	Trans Alaska Pipeline		Private
	Pipeline		State Forest
	Repair Status Line		State Public Use Area
	Completed - Inspected		Mining Claims
	Completed - Ready for Inspection		
	In Progress		

0 0.5 1 2 Miles

Olnes Boa

Moose Base-Camp

Sheep Dip

DIV M

DIV H

DIV Z

DIV E

DIV A

DIV C

AC Link

CMD2

CMD1

Murphy Dip

Boat Launch