

**SHOVEL CREEK FIRE  
AK-FAS-911319  
OPS Map - No Structures**

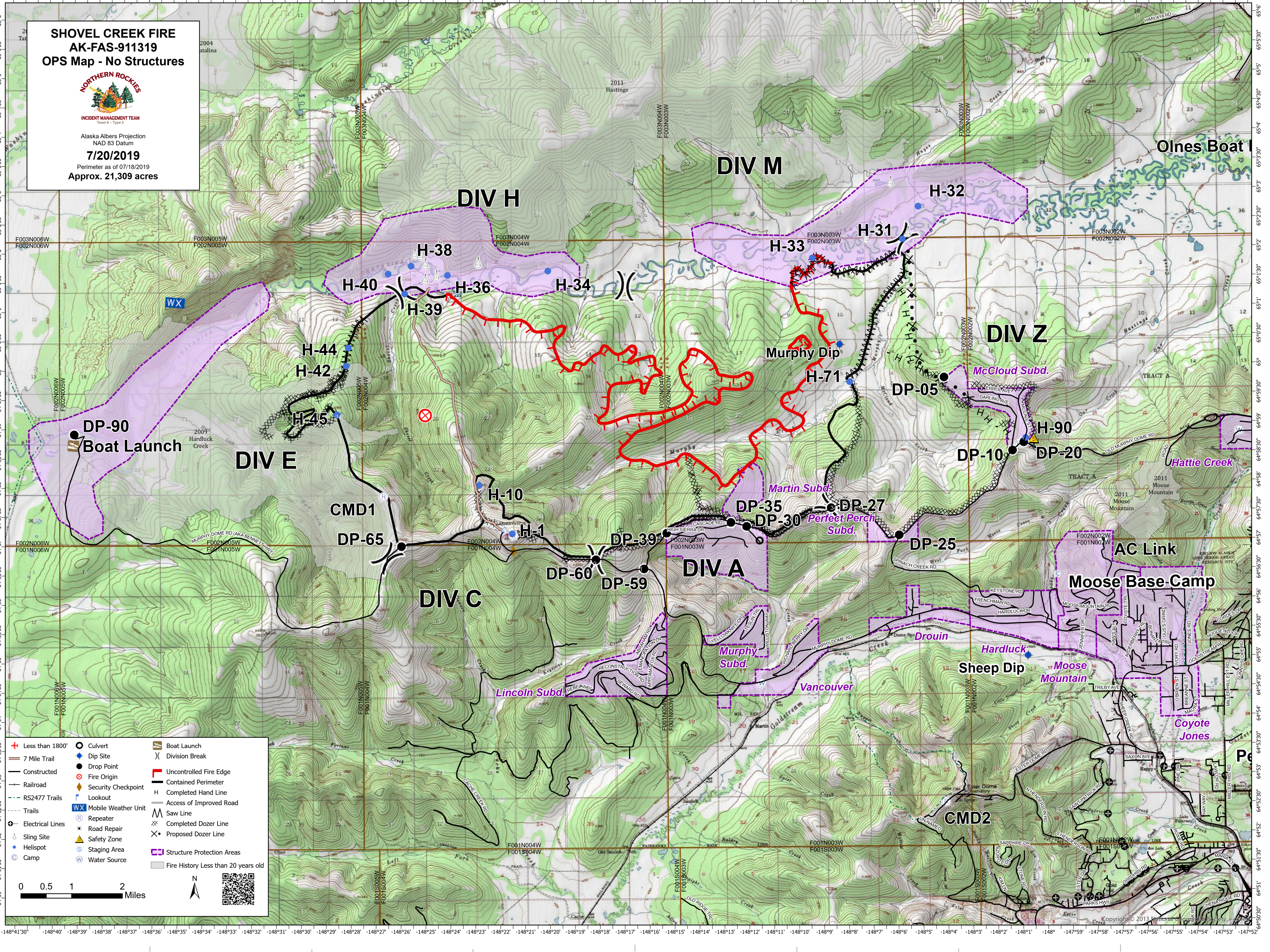


INCIDENT MANAGEMENT TEAM  
Team 6 - Type 2

Alaska Albers Projection  
NAD 83 Datum

**7/20/2019**

Perimeter as of 07/18/2019  
Approx. 21,309 acres



|                  |                     |                                     |
|------------------|---------------------|-------------------------------------|
| Less than 1800'  | Culvert             | Boat Launch                         |
| 7 Mile Trail     | Dip Site            | Division Break                      |
| Constructed      | Drop Point          | Uncontrolled Fire Edge              |
| Railroad         | Fire Origin         | Contained Perimeter                 |
| RS2477 Trails    | Security Checkpoint | Completed Hand Line                 |
| Trails           | Lookout             | Access of Improved Road             |
| Electrical Lines | Mobile Weather Unit | Saw Line                            |
| Road Repair      | Repeater            | Completed Dozer Line                |
| Sling Site       | Road Repair         | Proposed Dozer Line                 |
| Helispot         | Safety Zone         | Structure Protection Areas          |
| Camp             | Staging Area        | Fire History Less than 20 years old |
| Water Source     | Water Source        |                                     |

