

# SHOVEL CREEK FIRE AK-FAS-911319 Operations Vicinity Map



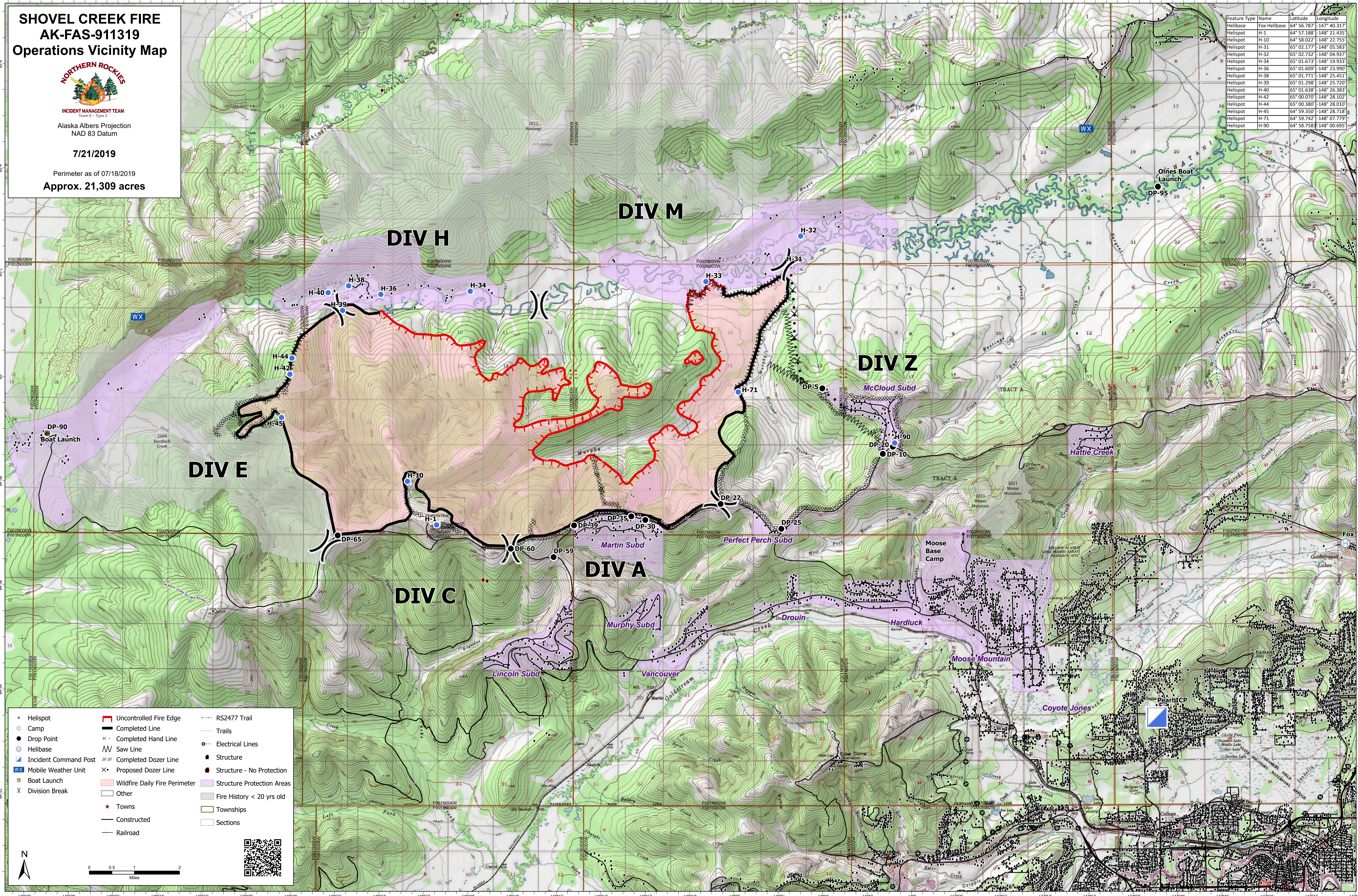
INCIDENT MANAGEMENT TEAM  
Team 6 - Type 2

Alaska Albers Projection  
NAD 83 Datum

7/21/2019

Perimeter as of 07/18/2019  
Approx. 21,309 acres

Feature Type	Name	Latitude	Longitude
Helibase	Fox Helibase	64° 56.787'	-147° 40.317'
Helispot	H-1	64° 57.188'	-148° 21.435'
Helispot	H-10	64° 58.022'	-148° 22.755'
Helispot	H-31	65° 02.177'	-148° 05.583'
Helispot	H-32	65° 02.732'	-148° 04.937'
Helispot	H-34	65° 01.673'	-148° 19.933'
Helispot	H-36	65° 01.609'	-148° 23.990'
Helispot	H-38	65° 01.771'	-148° 25.451'
Helispot	H-39	65° 01.298'	-148° 25.720'
Helispot	H-40	65° 01.638'	-148° 26.383'
Helispot	H-42	65° 00.070'	-148° 28.102'
Helispot	H-44	65° 00.380'	-148° 28.010'
Helispot	H-45	64° 59.350'	-148° 28.718'
Helispot	H-71	64° 59.742'	-148° 07.779'
Helispot	H-90	64° 58.758'	-148° 00.695'



• Helispot	■ Uncontrolled Fire Edge	--- RS2477 Trail
● Camp	— Completed Line	--- Trails
○ Helibase	H - Completed Hand Line	○ Electrical Lines
⊕ Incident Command Post	⌘ Saw Line	■ Structure
WX Mobile Weather Unit	⌘⌘ Completed Dozer Line	■ Structure - No Protection
⊕ Boat Launch	⌘ Proposed Dozer Line	■ Structure Protection Areas
X Division Break	■ Wildfire Daily Fire Perimeter	■ Fire History < 20 yrs old
	□ Other	■ Townships
	★ Towns	□ Sections
	— Constructed	
	— Railroad	

