


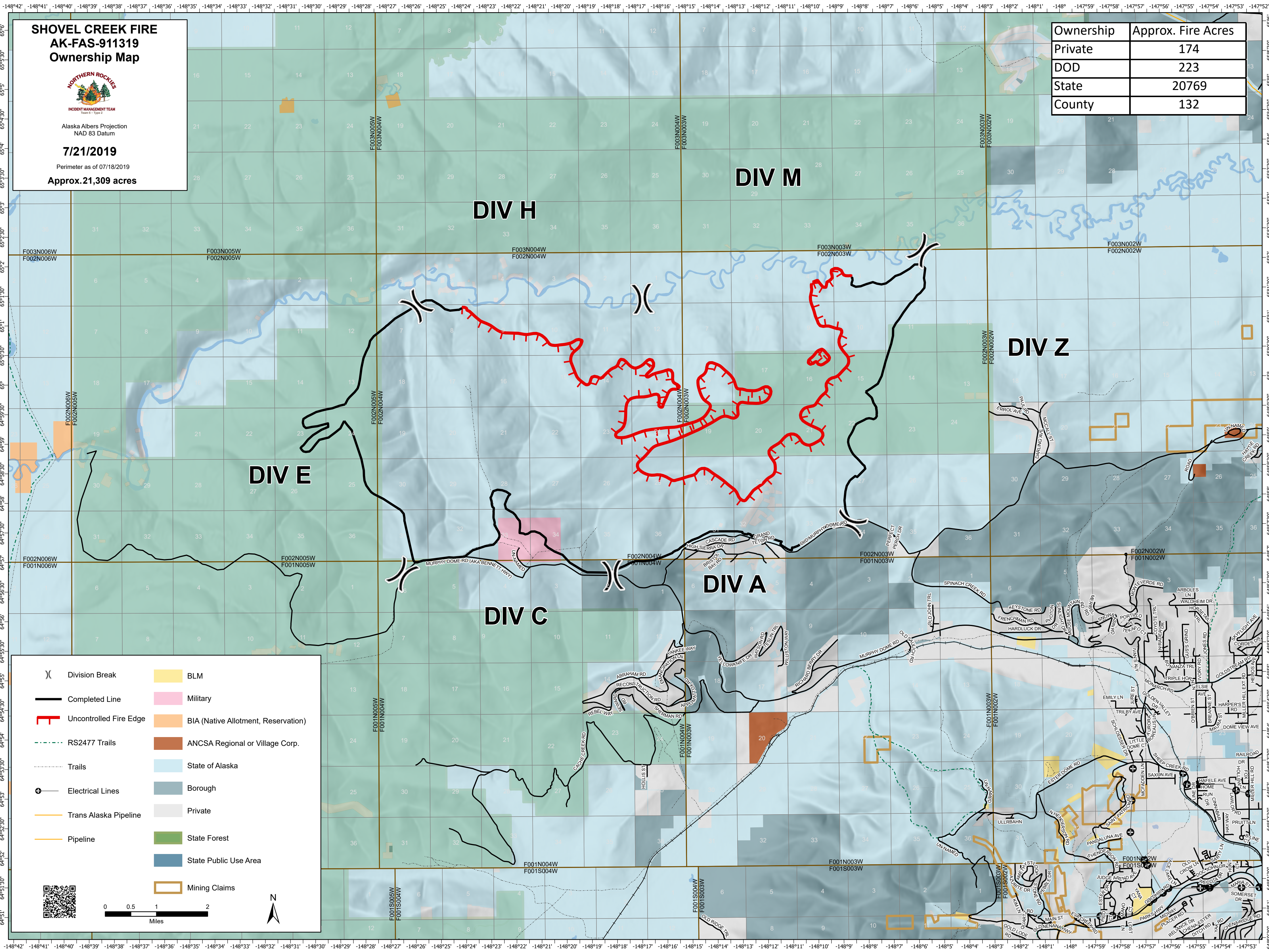
**SHOVEL CREEK FIRE  
AK-FAS-911319  
Ownership Map**



Alaska Albers Projection  
NAD 83 Datum

**7/21/2019**  
Perimeter as of 07/18/2019  
**Approx. 21,309 acres**

Ownership	Approx. Fire Acres
Private	174
DOD	223
State	20769
County	132



	Division Break		BLM
	Completed Line		Military
	Uncontrolled Fire Edge		BIA (Native Allotment, Reservation)
	RS2477 Trails		ANCSA Regional or Village Corp.
	Trails		State of Alaska
	Electrical Lines		Borough
	Trans Alaska Pipeline		Private
	Pipeline		State Forest
			State Public Use Area
			Mining Claims

0 0.5 1 2 Miles

